



Chesterfield Road, W4

£715,000

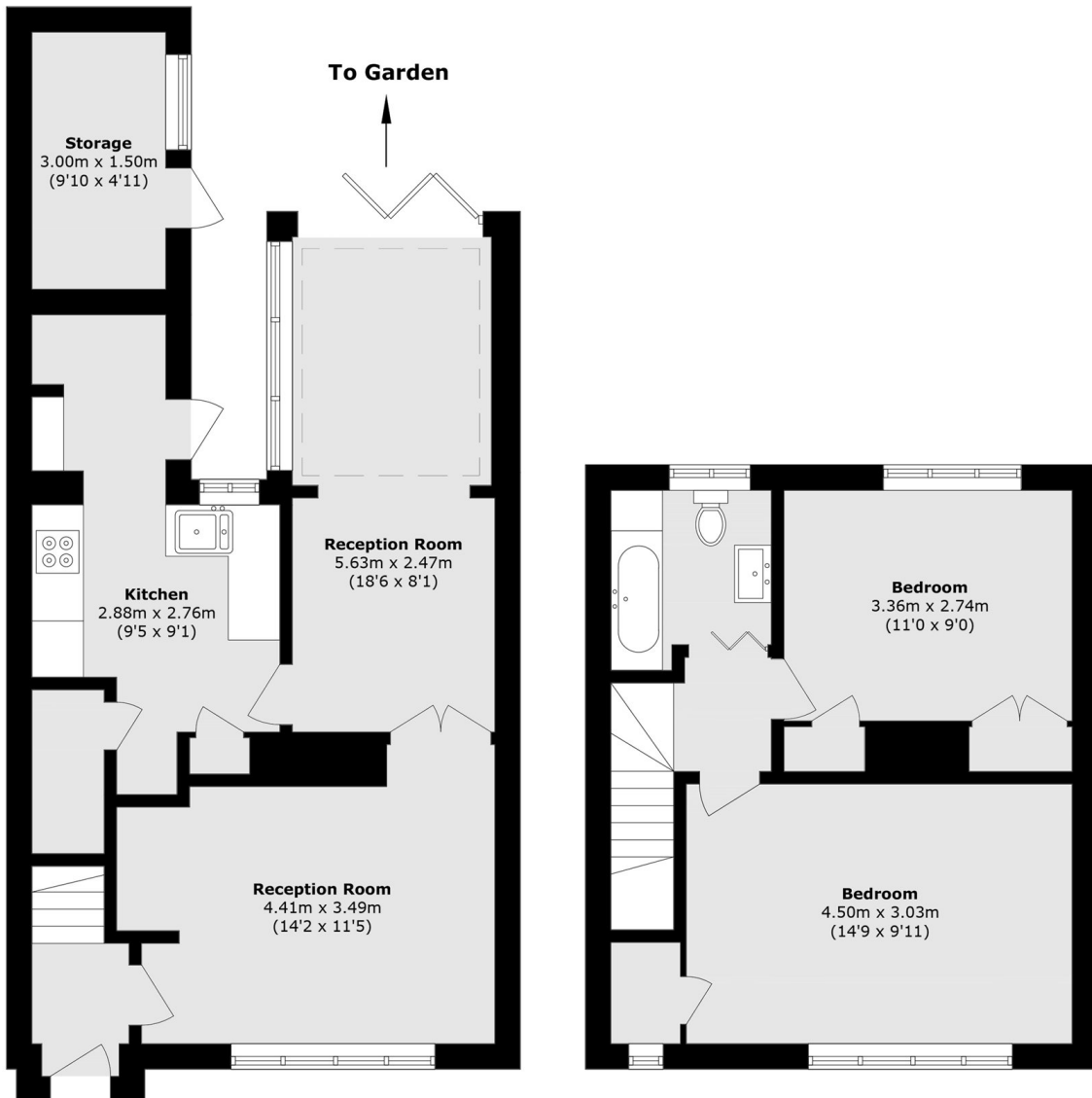
Located in the sought-after Grove Park area, this well-presented two bedroom house is an ideal first home. The ground floor offers the separate reception room leading through to a bright dining space with bi-fold doors opening onto a south-facing garden, alongside a modern kitchen and separate utility room. Upstairs, there are two good-sized bedrooms with built-in storage.

Chesterfield Road is well positioned for great transport links and local amenities. Turnham Green Underground station (District line) and Chiswick High Road are both within easy reach, offering a range of shops, cafés, and restaurants, as well as convenient access to the A4/M4 for driving.

Features

- Grove Park
- Two Double Bedrooms
- Utility Room
- South-Facing Garden
- Close To Transport

Chesterfield Road,
London, W4



Ground Floor

First Floor

Total area (approx.): 79.7 sq. m (857.8 sq. ft)

External Storage area (approx.): 4.5 sq. m (48.4 sq. ft)

Dexters

Chiswick
388 Chiswick High Road
London
W4 5TF

Sales
020 8995 4321

Energy Rating: C. We aim to make our particulars both accurate and reliable. However they are not guaranteed; nor do they form part of an offer or contract. If you require clarification on any points then please contact us, especially if you're traveling some distance to view. Please note that appliances and heating systems have not been tested and therefore no warranties can be given as to their good working order.

 **RICS** Regulated
Estate Agent
and Letting Agent

dexters.co.uk