



14 Lower Park, Coast View Holiday Park

Shaldon

Guide Price £95,000

ABSOLUTE



## 14 Lower Park

Coast View Holiday Park, Shaldon

Stylish 2-bedroom detached lodge with fabulous sea views, open-plan living, onsite pool, gym, café, and free golf. Wrap around decked terrace. Walk to Shaldon Village and beaches. No chain, legal fees, or stamp duty.

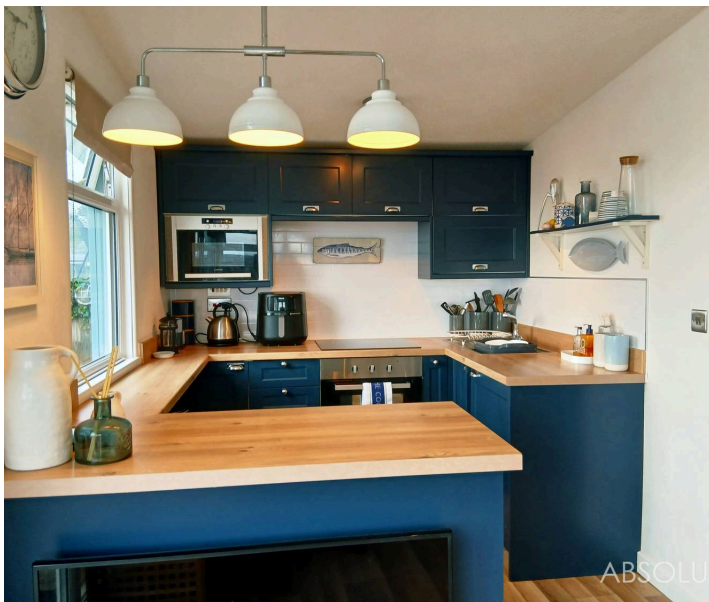
Pitch fee is £7000 a year

Tenure: Leasehold - 42 years

EPC Energy Efficiency Rating: F

EPC Environmental Impact Rating: E

- Detached holiday lodge set within a 5\* Visit England Park
- 2 Bedrooms
- Stunning sea views stretching towards the Jurassic coastline
- Beautifully presented throughout
- New stylish kitchen with integrated appliances
- Extended wrap around decked sun terrace with glass balustrade
- Onsite facilities include, heated indoor pool, a gym, a beauty salon & cafe/restaurant
- Complimentary golf at Teignmouth Golf Club
- No legal fees or stamp duty to pay. No onward chain
- Walking distance to Shaldon Village, The Ness and beaches.
- Fully managed sublet service available



## 14 Lower Park

Coast View Holiday Park, Shaldon

Located within easy walking distance of Shaldon Village, The Ness, and beautiful beaches, this property combines coastal living with the convenience of nearby amenities and attractions. The town of Teignmouth is nearby with a choice of shops, cafes and restaurants, along with a train station. Whether you are seeking a peaceful holiday retreat or a premium investment, this exceptional lodge delivers on every level, offering a unique blend of luxury, location, and lifestyle. Early viewing is highly recommended to fully appreciate the quality and setting of this outstanding home.

### Absolute Sales & Lettings

Absolute Sales & Lettings, 27 Hyde Road - TQ4 5BP

01803 890110

[paignton@movewithabsolute.co.uk](mailto:paignton@movewithabsolute.co.uk)

<http://www.movewithabsolute.co.uk>



ABS

# Ground Floor

Approx. 32.0 sq. metres (344.8 sq. feet)  
(excluding Balcony/Decking Area)



Total area: approx. 32.0 sq. metres (344.8 sq. feet)

