



Honor Oak Rise, London, SE23

2 Bedroom Flat For Sale

PCM £1,894 PCM





We are pleased to offer for rental this spacious two double bedroom flat, located on Honor Oak Rise in SE23. Set in a highly sought-after area, the property enjoys a fantastic position within easy reach of Honor Oak Park Station, local shops, cafés, and green spaces, including the much-loved One Tree Hill and Blythe Hill Fields.



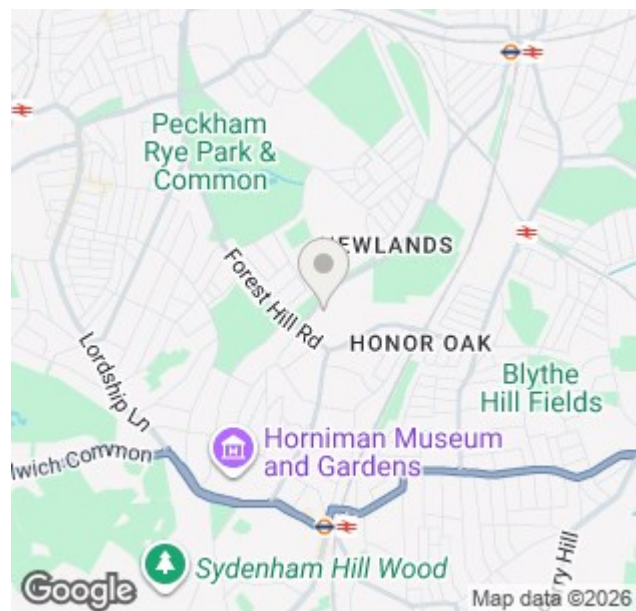
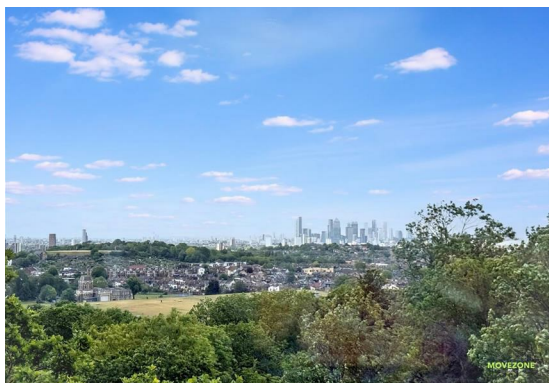
The flat offers two generous double bedrooms, an open plan lounge and kitchen creating a bright and sociable living space, and excellent storage with fitted cupboards in the hallway. The flat is located on the 6th floor of this block, and therefore the large windows provide breathtaking views across London, while double glazing throughout ensures comfort and efficiency.

Additional benefits include a bike shed and communal parking, available on a first come, first served basis.

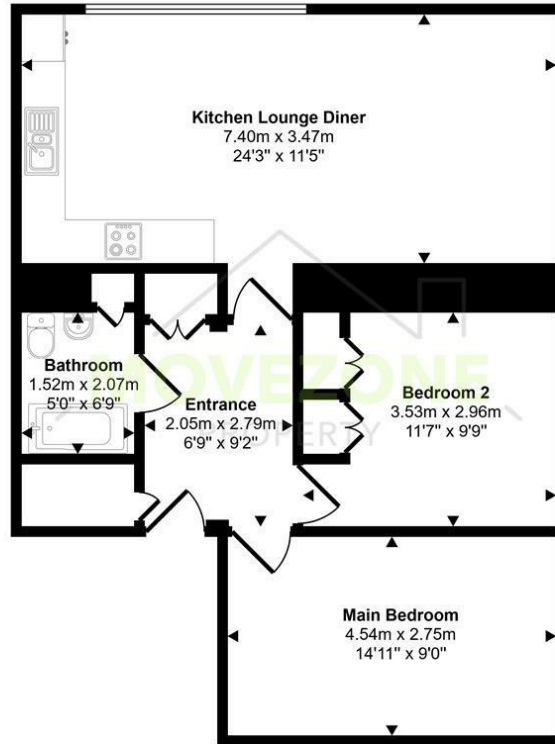


This property combines modern living with an enviable location, making it ideal for professionals, couples, or sharers looking to enjoy all that Honor Oak and Forest Hill have to offer.

Contingency Deposit: £2185.38
EPC Rating: C
Council Tax Band: B



Approx Gross Internal Area
66 sq m / 714 sq ft



Floorplan

This floorplan is only for illustrative purposes and is not to scale. Measurements of rooms, doors, windows, and any items are approximate and no responsibility is taken for any error, omission or mis-statement. Icons of items such as bathroom suites are representations only and may not look like the real items. Made with Made Snappy 360.

Energy Efficiency Rating		
	Current	Potential
<i>Very energy efficient - lower running costs</i>		
(92 plus) A		
(81-91) B		
(69-80) C	70	79
(55-68) D		
(39-54) E		
(21-38) F		
(1-20) G		
<i>Not energy efficient - higher running costs</i>		
England & Wales	EU Directive 2002/91/EC	

CONTACT

223 Southborough Lane
Bromley
Kent
BR2 8AT

E: info@movezone.co.uk

T: 0208 3139075

<https://www.movezone.co.uk>



