



Clapham Common South Side, £575,000

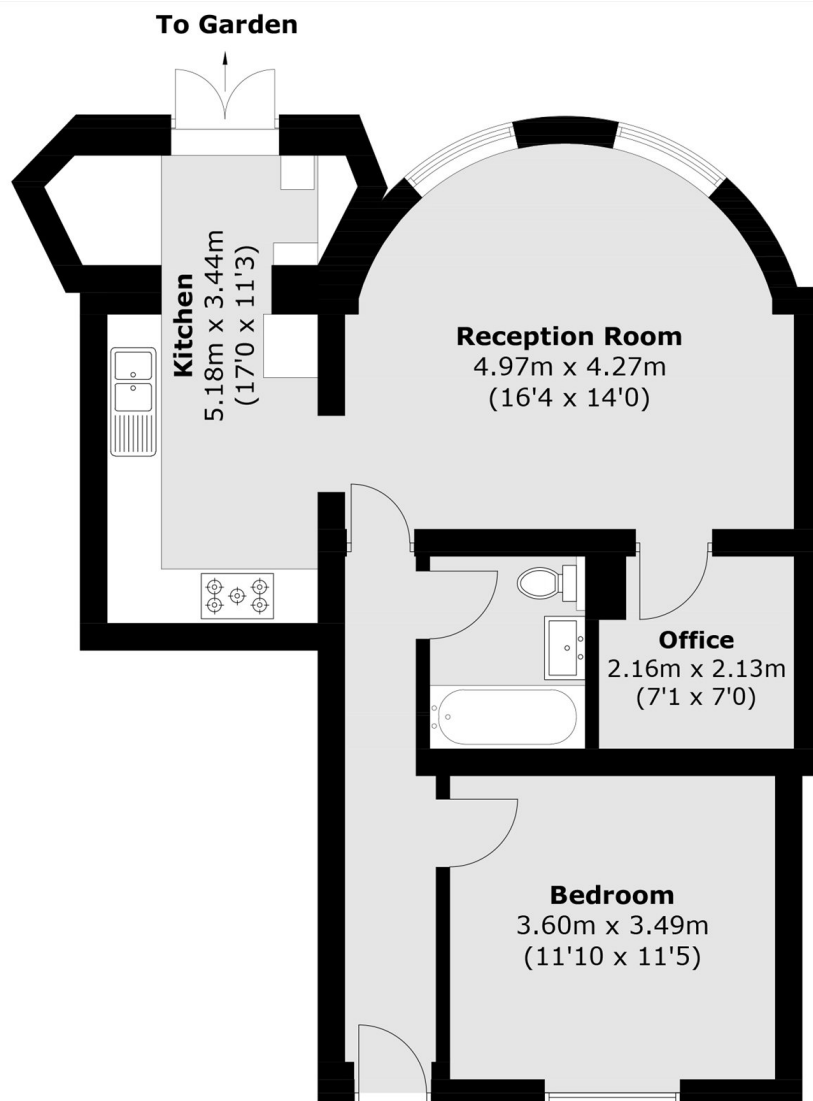
Having been extensively refurbished to a high and exacting standard throughout, this exceptional period conversion expertly fuses impressive entertaining space with comfortable living accommodation. Comprising a spacious reception room with ample room to dine, a separate kitchen which includes a range of integrated appliances, a double bedroom and a study/office. Outside, there is a large, private south-east facing garden.

Situated on the doorstep of Clapham Common, the property is ideally located for the many local boutique shops, bars and restaurants of the Abbeville Village and Clapham Old Town. Clapham Common & Clapham South stations (Northern Line) are just a short stroll away.

Features

- Period Conversion
- Large Reception Room
- Modern Kitchen
- Double Bedroom & Study
- Private Garden
- Superb Location

Clapham Common South Side, London, SW4



Lower Ground Floor

Total area (approx.): 63.3 sq. m (681.4 sq. ft)