



## Westbank Road, TW12

£725,000

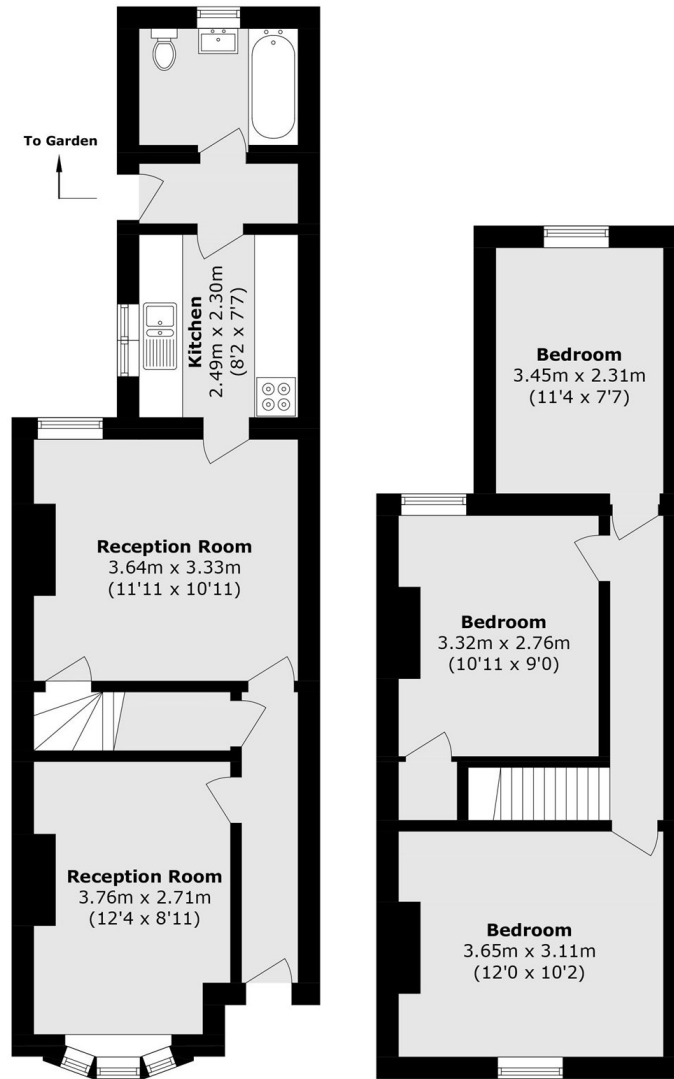
This is a very pretty, Victorian, three bedroom house which has scope to further extend (subject to planning permission) as the family grows. We love the large windows that flood the house with natural light.

Westbank Road is perfectly situated for life in Hampton Hill. Bushy Park is a walk away along with the shops, cafés and restaurants of Hampton Hill High Street, fantastic bus links and a selection of local schools.

### Features

- Three Bedrooms
- Victorian
- Private Garden
- Cul De Sac
- No Onward Chain
- Scope To Extend (STPP)

# Westbank Road, Hampton, TW12



**Ground Floor**

**First Floor**

Total area (approx.): 77.4 sq. m (833.1 sq. ft)