

Holdings

A Modern Estate Agent



62 Kendal Road, Loughborough, LE12 7PF

£279,000

A well presented three bedroom semi-detached home in the popular village of Sileby, featuring a spacious kitchen/diner with French doors opening onto a private rear garden. Ideally located for access to Leicester and Loughborough, with excellent local transport links.

Summary

Situated in the well-served village of Sileby, this well presented three bedroom semi-detached home offers comfortable and practical living, ideal for first-time buyers, young families or those looking to upsize. The village itself benefits from a train station and regular public transport links, providing convenient access to Leicester city centre and Loughborough.

The property is approached via a driveway, leading to a welcoming entrance hall with stairs rising to the first floor. Off the hallway is a useful downstairs WC fitted with a modern white suite. To the front of the property, the lounge provides a bright and inviting space, ideal for relaxing or entertaining.

To the rear, the kitchen/diner forms the heart of the home, fitted with a range of wall and base units with complementary tiled splashbacks, integrated oven, dishwasher, hob and fridge, along with space for a washing machine. Additionally, French doors and a further side door open directly onto the garden, creating a seamless connection between indoor and outdoor living.

Upstairs, the landing provides access to three bedrooms and the family bathroom. The principal bedroom benefits from fitted wardrobes, while the remaining two bedrooms offer flexibility for use as children's rooms, a home office or guest accommodation. The bathroom is fitted with a white suite, including a bath with shower over, wash basin and WC.

Externally, the rear garden has been thoughtfully arranged to include a decked seating area, patio and lawn, all enclosed by fencing, providing a safe and private outdoor space.

This attractive home combines a convenient location with well-proportioned accommodation and is ready to move into, making it a great opportunity for a wide range of buyers.

Disclaimer

1. Intending purchasers will be asked to produce identification documentation.
2. While we endeavour to make our sales particulars fair, accurate, and reliable, they are only a general guide to the property.
3. The measurements indicated are supplied for guidance only and, as such, must be considered incorrect.

4. Please note we have not tested the services or any of the equipment or appliances in this property; accordingly, we strongly advise prospective buyers to commission their survey or service reports before finalising their offer to purchase.

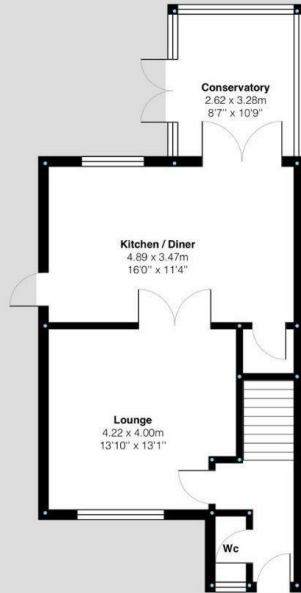
5. These particulars are issued in good faith but do not constitute representations of fact or form part of any offer or contract. The matters referred to in these particulars should be independently verified by prospective buyers. Neither Holders Estate Agents nor its agents have any authority to make or give any representation or warranty concerning this property.

Extra Information

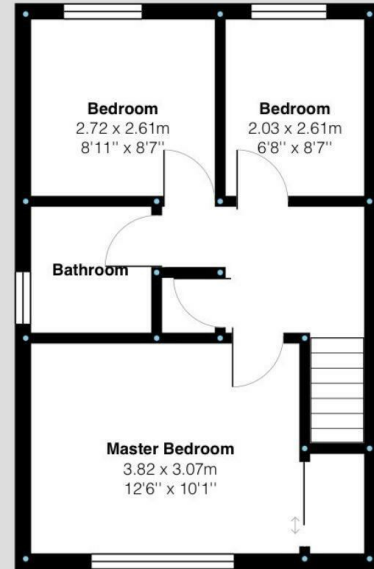
To check Internet and Mobile Availability please use the following link: checker.ofcom.org.uk/en-gb/broadband-coverage To check Flood Risk please use the following link: check-long-term-flood-risk.service.gov.uk/postcode

Floor Plan

Ground Floor:



First Floor:



Kendal Road, Sileby
Internal Square Footage: Approx 927 sq.ft

Holderr
A Modern Estate Agent

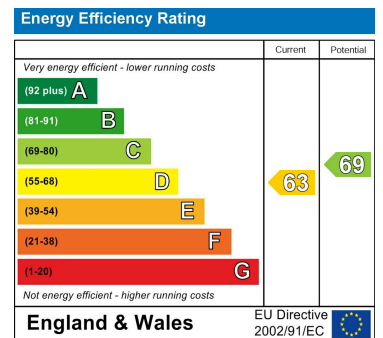
Kendal Road, Sileby
Internal Square Footage: Approx 927 sq.ft

Holderr
A Modern Estate Agent

Area Map



Energy Efficiency Graph



These particulars, whilst believed to be accurate are set out as a general outline only for guidance and do not constitute any part of an offer or contract. Intending purchasers should not rely on them as statements of representation of fact, but must satisfy themselves by inspection or otherwise as to their accuracy. No person in this firm's employment has the authority to make or give any representation or warranty in respect of the property.

9 Bedford Square, Loughborough, Leicestershire, LE11 2TP
Tel: 01509 451100 Email: Rebecca@holdersestateagents.co.uk