



4

Bedrooms



3

Bathrooms

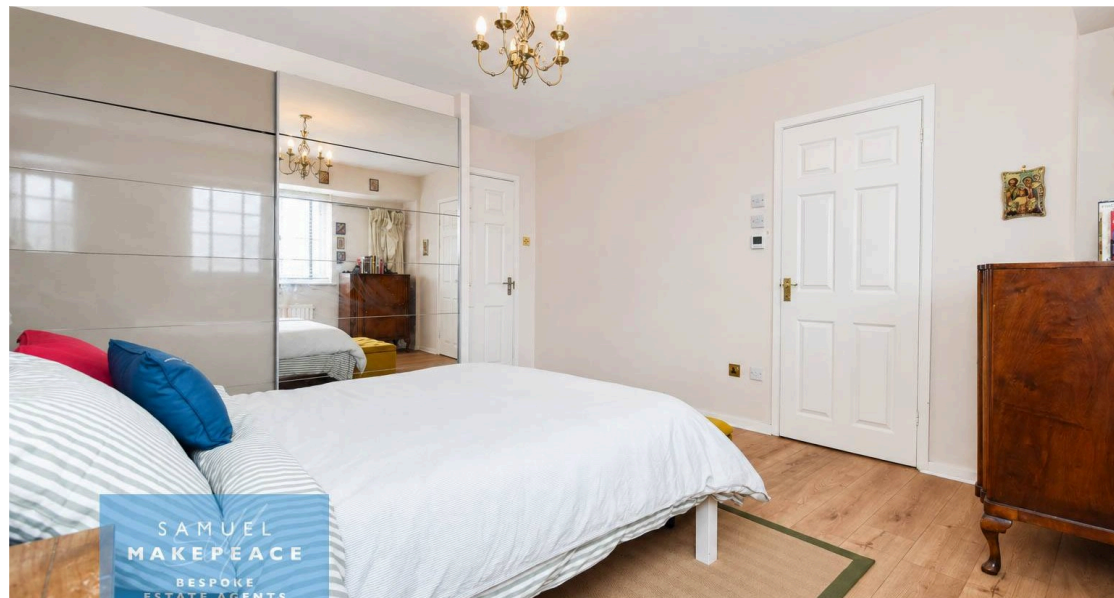


2

Receptions



- IMPRESSIVE FOUR DOUBLE BEDROOM FAMILY HOME FOR SALE
- SPACIOUS LIVING ROOM WITH CHARMING FEATURE FIREPLACE
- BEAUTIFUL BAY WINDOWS FLOODING THE ROOM
- COSY SNUG WITH SLIDING PATIO DOORS TO THE GARDEN
- LIGHT AND AIRY CONSERVATORY WITH POWER AND LIGHTING
- MODERN KITCHEN WITH INTEGRATED APPLIANCES
- PRACTICAL UTILITY ROOM AND STYLISH DOWNSTAIRS SHOWER ROOM
- FOUR DOUBLE BEDROOMS PERFECT FOR BUSY FAMILY LIFE
- GENEROUS DRIVEWAY, ATTACHED GARAGE AND TIERED REAR GARDEN



LIGHT, SPACE AND STYLE — WILLIOTS HILL ROAD DELIVERS IT ALL.

Set on the ever-popular Willotts Hill Road, this spacious and beautifully practical family home offers bright, versatile living throughout. Step inside to a welcoming entrance hall, leading into a large living room with a feature fireplace and bay windows that fill the space with natural light. Double internal doors open into the cosy snug, complete with sliding patio doors to the garden, while the conservatory provides a fantastic additional family space, equipped with power and lighting.

The recently refurbished kitchen sits at the heart of the home and comes complete with integrated appliances, perfect for busy mornings and everyday family life. A handy utility room adds further practicality, while a modern downstairs shower room completes the ground floor accommodation.

Benefitting from new carpets, upstairs, there are four double bedrooms, with the master bedroom benefitting from fitted wardrobes and its own newly fitted ensuite shower room. There is also a dedicated office room with fitted wall units and a bespoke desk, ideal for working from home. The large family bathroom, complete with bath and overhead shower, is well suited to busy households.

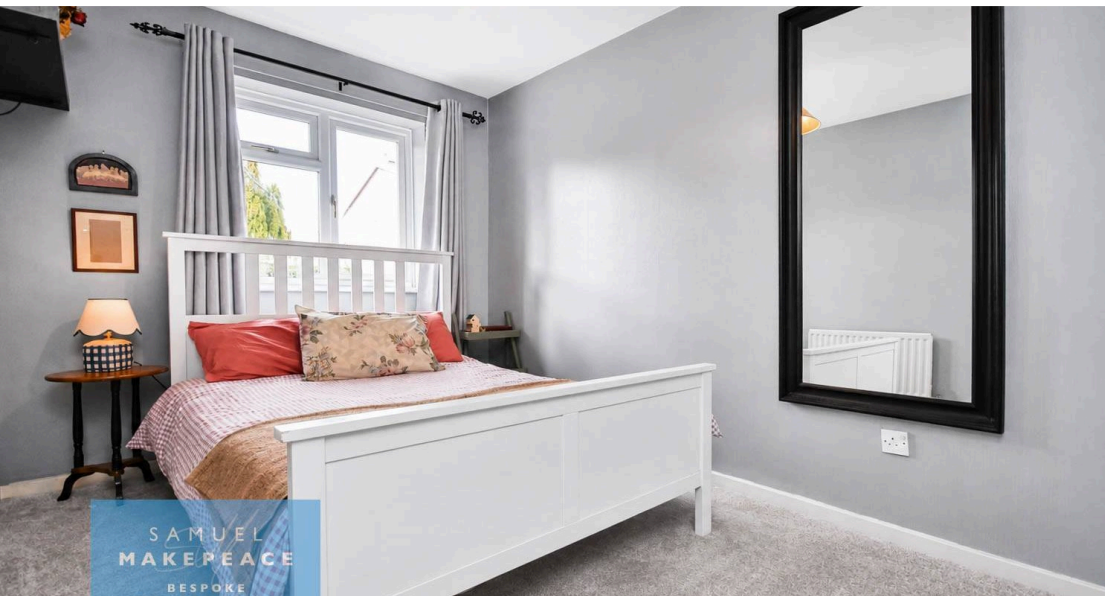
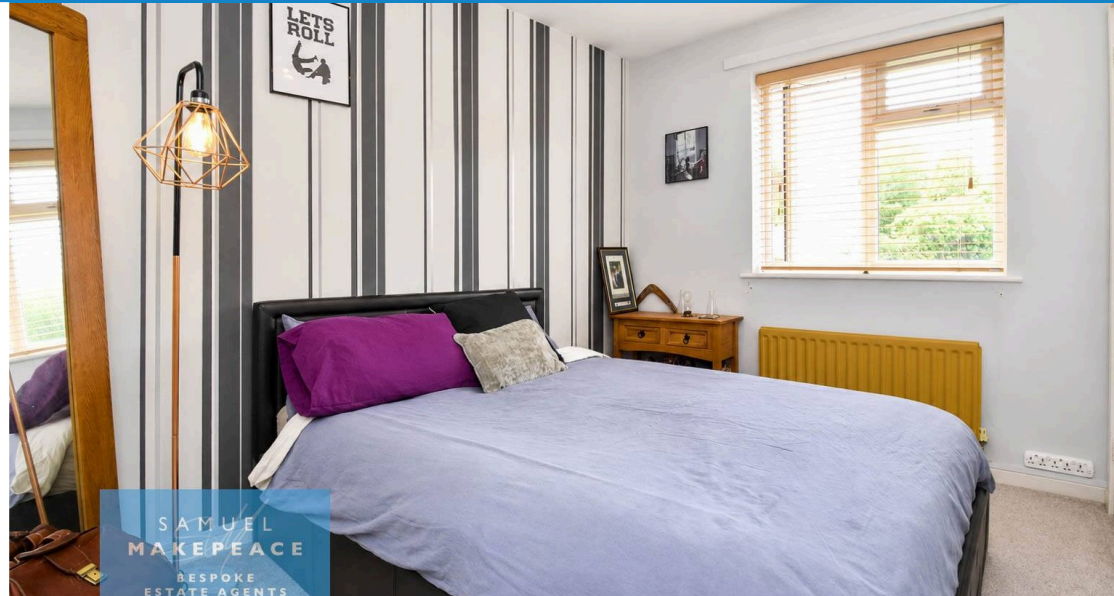
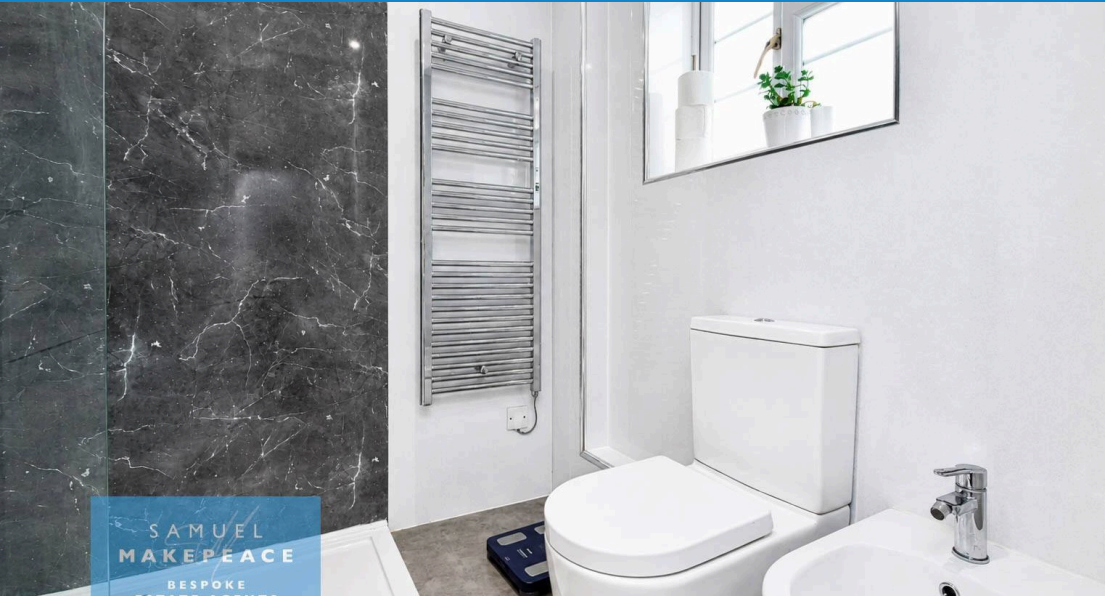
Outside, the tiered rear garden offers paved patio seating areas and a lawn, creating a great space for entertaining and relaxing. To the front, a large driveway provides parking for multiple vehicles, alongside an attached single garage for further parking or storage.

From busy mornings to relaxed evenings, this home has been designed to make family life flow.

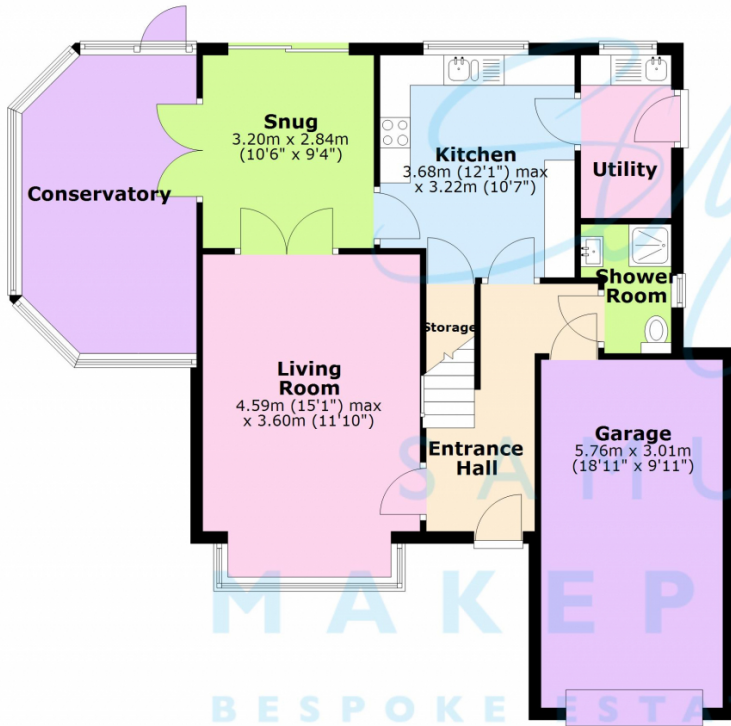
Contact Samuel Makepeace Bespoke Estate Agents Today!

Disclaimer:

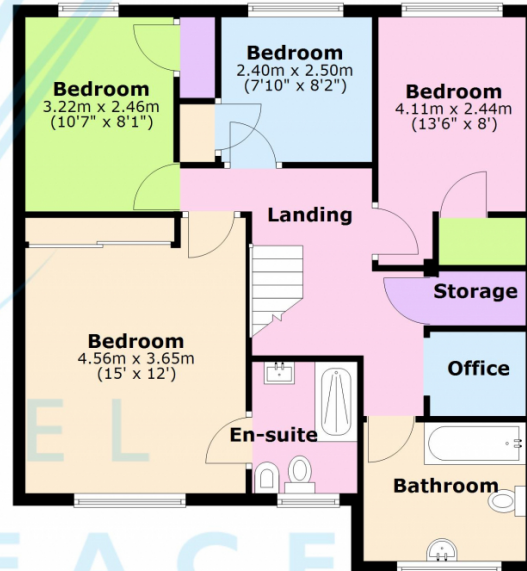
All property particulars are provided in good faith and are believed to be accurate to the best of our knowledge at the time of publication. Samuel Makepeace (Newcastle & Stoke) Ltd t/a Samuel Makepeace Bespoke Estate Agents cannot accept any responsibility for any errors, omissions, or misstatements. Prospective purchasers are advised to verify the details independently and should not rely solely on the information provided when making decisions. These particulars remain the property of Samuel Makepeace Bespoke Estate Agents Stoke on Trent, Newcastle Under Lyme & Alsager.



Ground Floor



First Floor



Total area: approx. 155.6 sq. metres (1675.3 sq. feet)

Floorplans are provided as a guide only. All measurements are not to be relied upon. To confirm any measurements and layouts you must check yourself. Samuel Makepeace Bespoke Estate Agents do not accept any liability for the accuracy of this. Plan produced using PlanUp.



Scan me for more info

