



Queen Victoria Avenue
Hove, BN3 6XB

FERMERS



5
2
2





TENURE
Freehold


EPC RATING

COUNCIL TAX BAND
F



Energy Efficiency Rating

	Current	Potential
Very energy efficient - lower running costs		
(92 plus) A		
(81-91) B		
(69-80) C		
(55-68) D		
(39-54) E		
(21-38) F		
(1-20) G		
Not energy efficient - higher running costs		

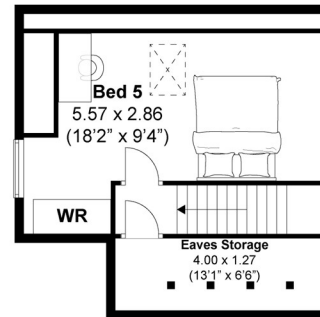
England & Wales EU Directive 2002/91/EC 



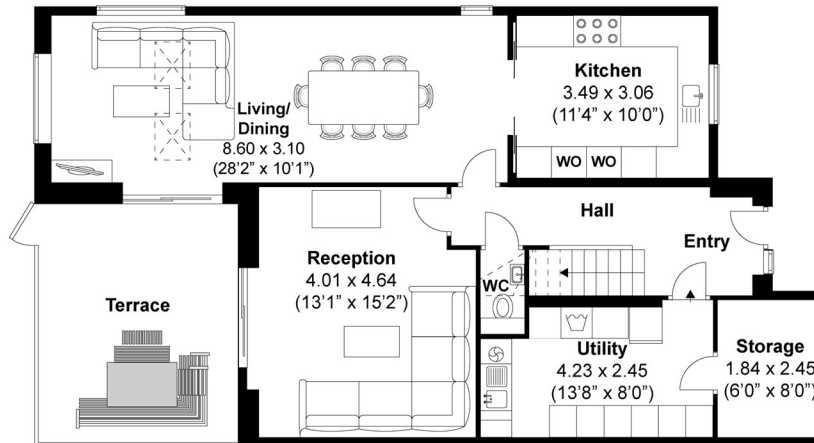
Queen Victoria Avenue

Queen Victoria Avenue, Hove

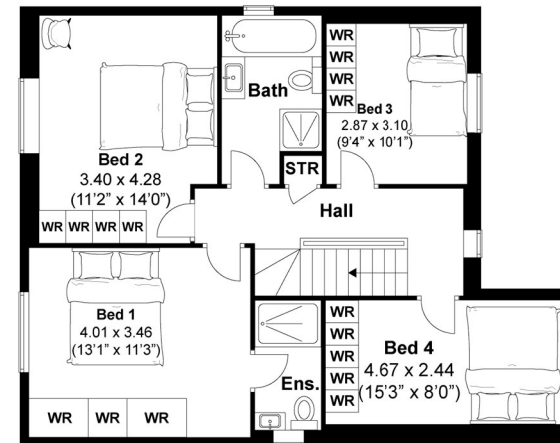
Approximately 190 sqm (2045.1 sqft)



TOP FLOOR



GROUND FLOOR



FIRST FLOOR



Disclaimer:

The measurements are approximate and are for illustration purposes only. The dimensions are measured internally and in metres and feet. We do not take any responsibility for errors and/or omissions. If you require further verification please discuss with the buyer/owner of the property.



FERMERS

OFFICE ADDRESS

67 Queen Victoria Avenue
Hove
East Sussex
BN3 6XA

OFFICE DETAILS

01273 541 177
sales@fermers.co.uk
www.Fermers.co.uk

Agents Note: Whilst every care has been taken to prepare these particulars, they are for guidance purposes only. All measurements are approximate and are for general guidance purposes only and whilst every care has been taken to ensure their accuracy, they should not be relied upon and potential buyers/tenants are advised to recheck the measurements