



BICKLEY STREET, SW17

£550,000

- Ground floor maisonette
- Two double bedrooms
- Open plan kitchen/living
- Stylishly presented
- Private rear garden
- No onward chain





## ABOUT THE HOME

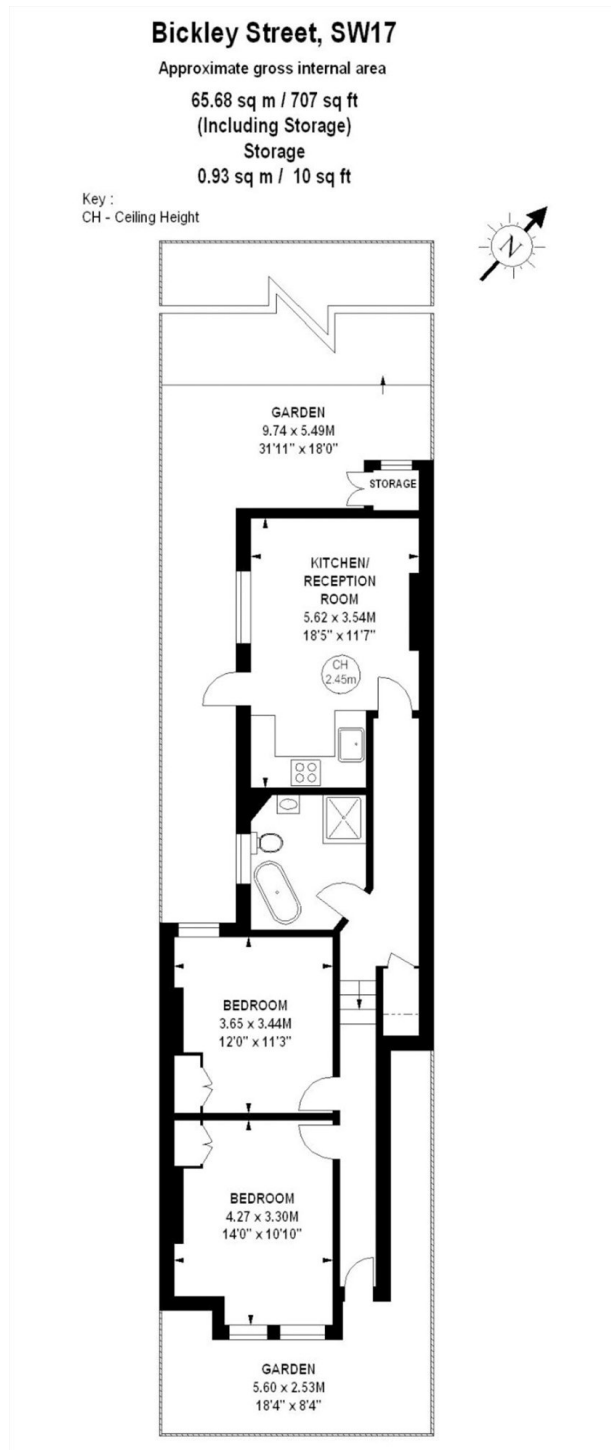
**\*\*OIEO\*\***

A stylish and well-presented two double bedroom, ground floor Victorian garden Maisonette. That has benefited from a recent redecoration throughout and being sold with the added benefit of no onward chain. Located on the very popular Bickley Street. Internally the property amasses an impressive 707 sq ft, which comprises; To the front of the front property, two spacious double bedrooms both with inbuilt bespoke wardrobes, a modern four piece family bathroom with bath and separate free standing shower. A hallway closet providing ample storage space and finally to the rear you will find a spacious open plan living with a modern fitted kitchen and doors leading out to the private west facing rear garden with unobstructed views.

Bickley Street is a popular enclave, within moments of the vibrant Tooting Broadway cafe culture. Where you will find a fantastic mix of large chain brands, small independent business and the highly coveted Tooting Broadway market with fantastic pop up bars and restaurants. Coupled with sought after Ofsted outstanding! primary schools all within short distance.







### JACKSONS TOOTING

3 Upper Tooting Road, London,  
SW17 7TS

Sales: 020 8487 3175

Lettings: 020 8487 3176

Energy Rating: We aim to make our particulars both accurate and reliable. However they are not guaranteed; nor do they form part of an offer or contract. If you require clarification on any points then please contact us, especially if you're traveling some distance to view. Please note that appliances and heating systems have not been tested and therefore no warranties can be given as to their good working order.