



Dixon Court, Fenwick Park, Bedlington, NE22 6FG

Offers Over £375,000

Harpers | POWERED BY **exp** UK
property people

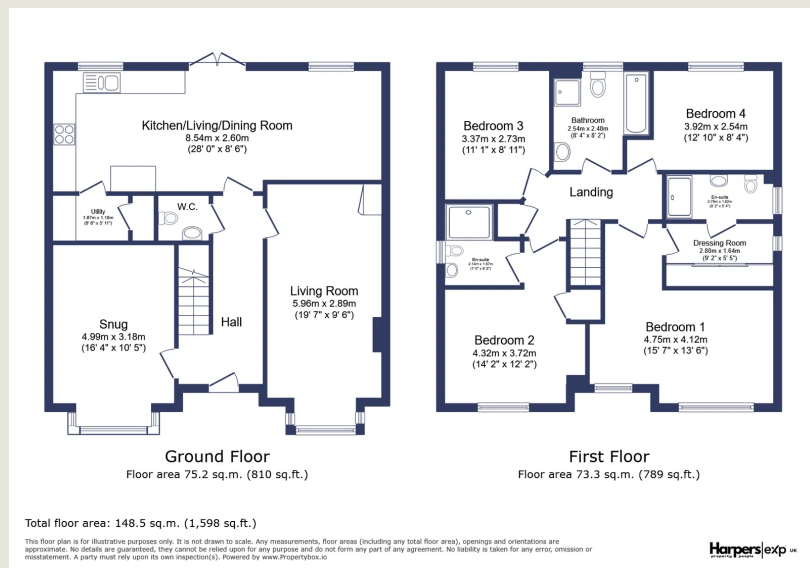
Bedrooms: 4 | Bathrooms: 3 | Receptions: 3

Discover this exceptional four-bedroom detached family home, nestled in a quiet cul-de-sac within the desirable Fenwick Park development in Bedlington. Boasting a substantial 1598 square foot of internal space, this modern property has been upgraded throughout and is presented to an exacting standard, offering a sophisticated and comfortable living environment. Upon entering, you are greeted by a welcoming ambiance that extends through to two magnificent front-aspect living rooms, providing versatile spaces for relaxation and entertaining. The heart of this home is undoubtedly the full-width, very well-appointed kitchen/dining/family room, designed for seamless modern living and perfect for gathering with loved ones. Practicality is further enhanced by a convenient ground floor W/C and a utility room. Upstairs, you will find four generously proportioned double bedrooms, ensuring ample space for all. The principal bedroom benefits from a private en-suite shower room, and an additional en-suite shower room serves another bedroom, offering privacy and convenience. A luxurious four-piece family bathroom completes the first-floor accommodation. Externally, the property features a double driveway, providing ample off-street parking. The large, West-facing garden offers a delightful outdoor sanctuary, perfect for enjoying the afternoon and evening sun, ideal for outdoor dining or simply unwinding. Situated in a quiet cul-de-sac, this home combines tranquil living with excellent accessibility to local amenities. This property truly offers a blend of modern design, spacious living, and a prime location. We highly recommend a viewing to fully appreciate the quality and extensive features of this splendid family home.

- Detached Family Home
- Four Double Bedrooms
- 4-Piece Family Bathroom & Two Ensuite Shower Rooms
- Two Magnificent Front Aspect Living Rooms
- A Welcoming Full Width Kitchen/Dining/Family Room With Integrated Appliances
- Ground Floor WC & Utility Room
- West Facing Garden
- Upgraded Throughout & Presented To An Exacting Standard
- Quiet Cul-De-Sac Plot With Double Driveway
- A Spacious 1598 Square Footage Of Internal Space







Harpers Property People

80 Windsor Gardens, Bedlington, NE22 5SY

07813 673 606

ali@harpersproperty.com

<https://harpersproperty.com>

Harpersexp UK
property people