

Properly<sup>✓</sup>



Flat 19, Colwell House 376A Clapham Road, London

London

Properly<sup>©</sup>

# Properly



This beautifully presented two-bedroom, two-bathroom flat is set within a modern development and offers contemporary living in a highly sought-after location. Situated on the second floor at the rear of the building, the property enjoys a peaceful setting with the added benefit of lift access for convenience. The light and airy open plan living room and kitchen provide an inviting space for both relaxation and entertaining, enhanced by hardwood flooring and large windows that fill the room with natural light. The principal bedroom features a stylish en suite shower room, while the second double bedroom is served by a separate family bathroom. Further benefits include integrated air conditioning, double glazing throughout, and a neutral décor that will suit a variety of tastes. Offered chain free, this flat presents an ideal opportunity for first-time buyers, professionals, or investors alike. The property is ideally located close to both Clapham North and Stockwell Tube Stations, offering excellent transport links into Central London and beyond. Residents of this development have access to a well-maintained communal garden, providing a tranquil outdoor retreat in the heart of the city. Local amenities are within easy reach, with a variety of shops, cafes, and restaurants nearby, as well as the open green spaces of Clapham Common just a short walk away.



Properly 



## Flat 19

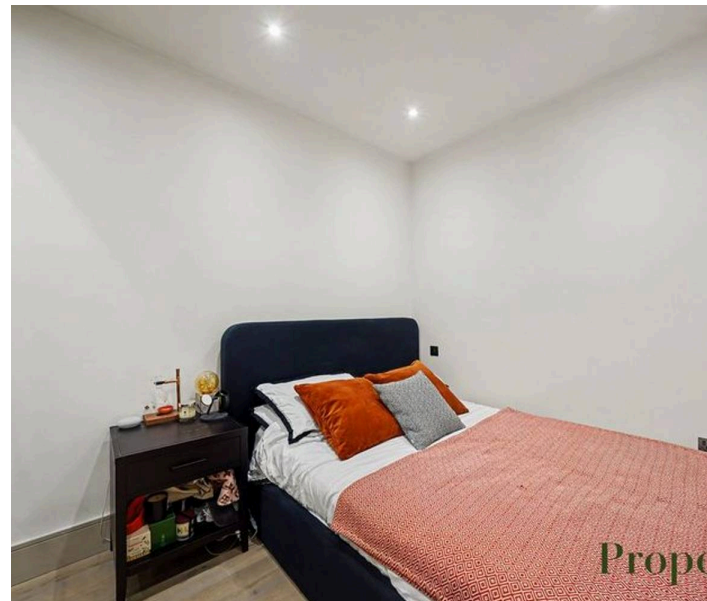
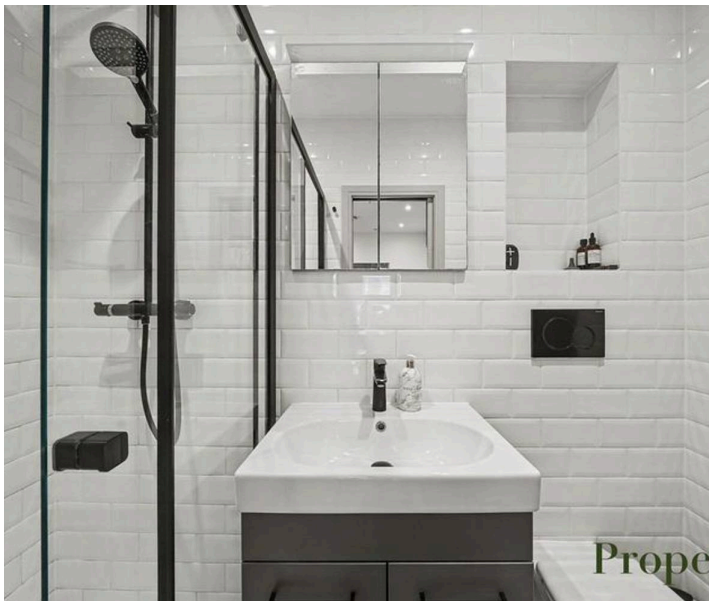
Colwell House 376A Clapham Road,  
London

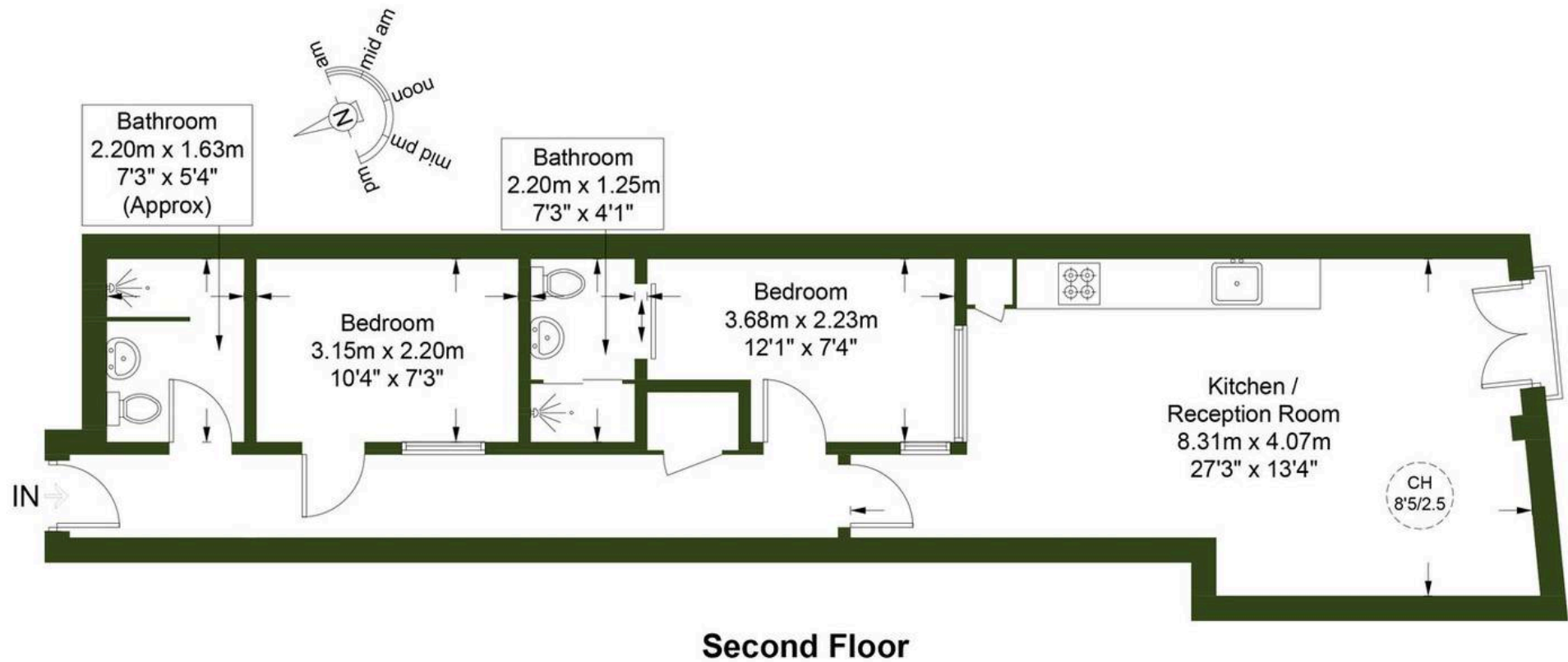
Modern two-bedroom, two-bath flat on second floor with lift, open plan living, en suite, communal garden, air con, near Clapham North and Stockwell stations. Chain free.

Council Tax band: TBD

Tenure: Leasehold

- Modern Development
- Lift Access
- 2 Bed 2 Bath (Principal Bedroom with en suite)
- Air Conditioning
- Chain Free
- Close to Clapham North and Stockwell Tube Stations
- Light and Airy Open Plan Living Room/Kitchen
- Communal Garden
- Second Floor Flat at Rear Of Building
- Hardwood Flooring





Properly 



Properly

46-48 East Smithfield, London - E1W 1AW

0207 459 4400 • [hello@properly.space](mailto:hello@properly.space) • [www.properly.space/](http://www.properly.space/)

