



Chrisp Street, E14

£588 Per week

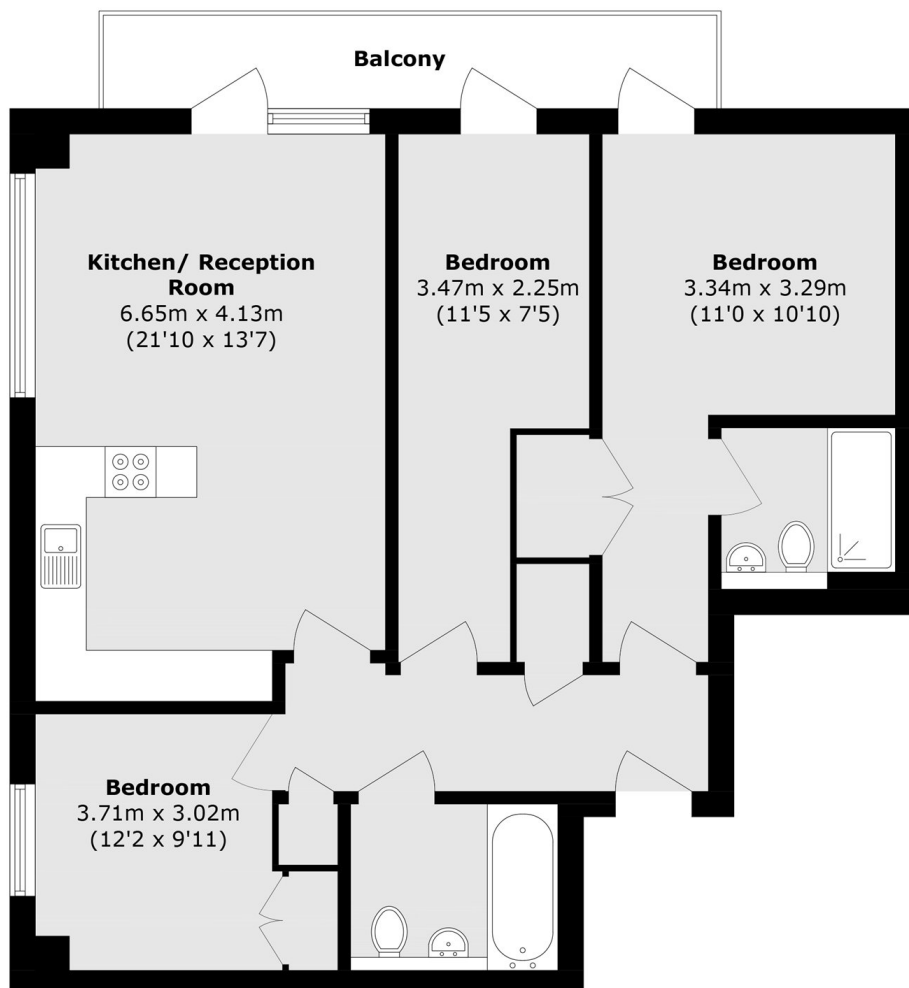
A three-bedroom apartment comprising an open-plan reception, wood flooring, two bathrooms, an integrated kitchen, and a private balcony.

Parkview Apartments is located 0.1 miles from Langdon Park DLR station and within walking distance of the amenities in central Canary Wharf.

Features

- Three Bedrooms
- Two Bathrooms
- Open Plan Reception
- Wood Flooring
- Furnished
- Private Balcony

Chrisp Street, London, E14



Total area (approx.): 86.0 sq. m (925.7 sq. ft)
Excluding Balcony