



HAZEL CLOSE, TW8

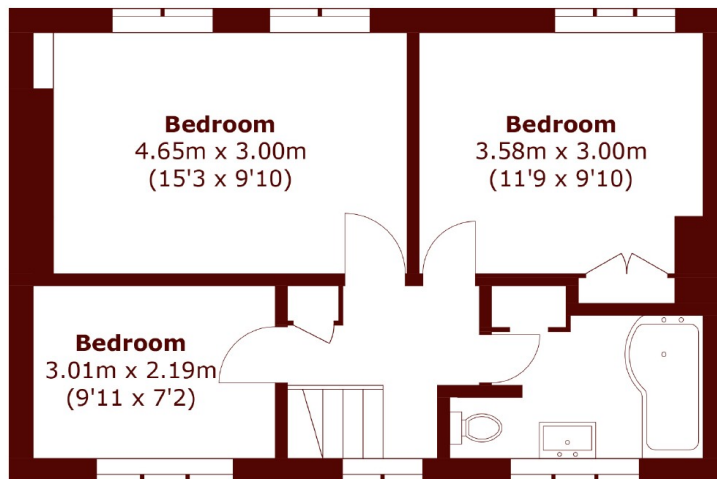
£465,000

Well located in a cul-de-sac on the Duke of Northumberland estate this four bedroom property would make a perfect investment or home.

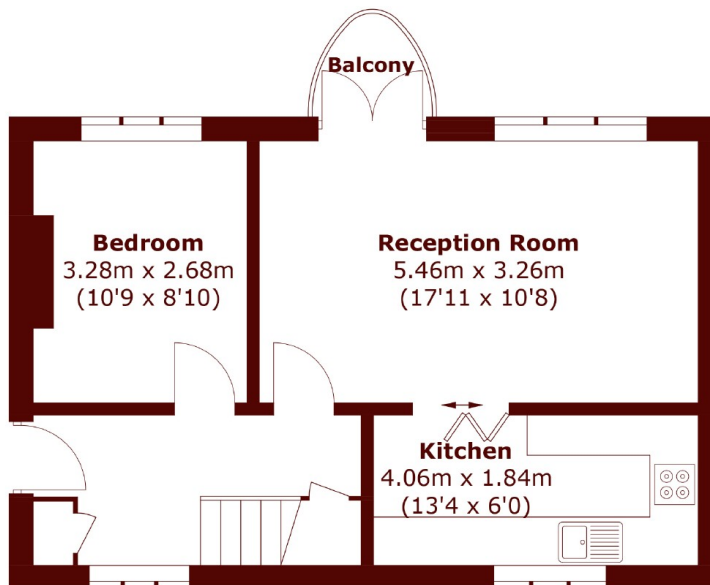
Four bedrooms
One bathroom
First floor

Duke of Northumberland Estate
Close to transport
Energy rating: d

STEP INSIDE HAZEL CLOSE



First Floor



Ground Floor

Total area (approx.): 88.1 sq. m (948.3 sq. ft)
Balcony area: 1.5 sq. m (16.1 sq. ft)

Chiswick
020 8994 2556

Energy Rating: D We aim to make our particulars both accurate and reliable. However, they are not guaranteed; nor do they form part of an offer or contract. If you require clarification on any points then please contact us, especially if you're traveling some distance to view. Please note that appliances and heating systems have not been tested and therefore no warranties can be given as to their good working order

MARSH &
PARSONS