



Bath Terrace

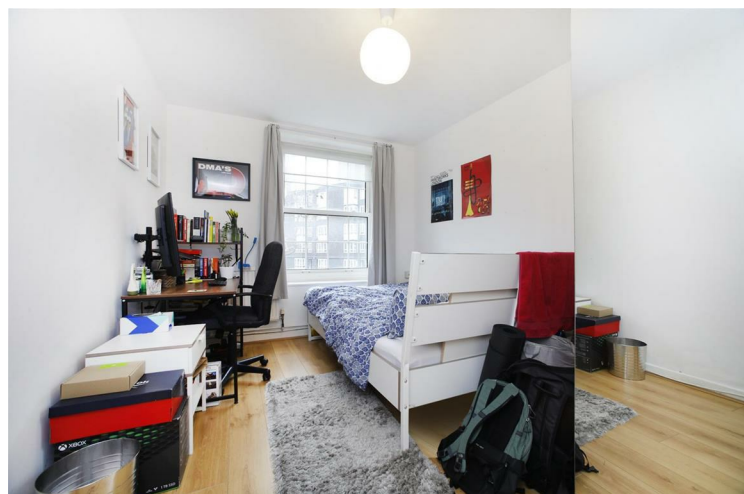
£2,150 PCM

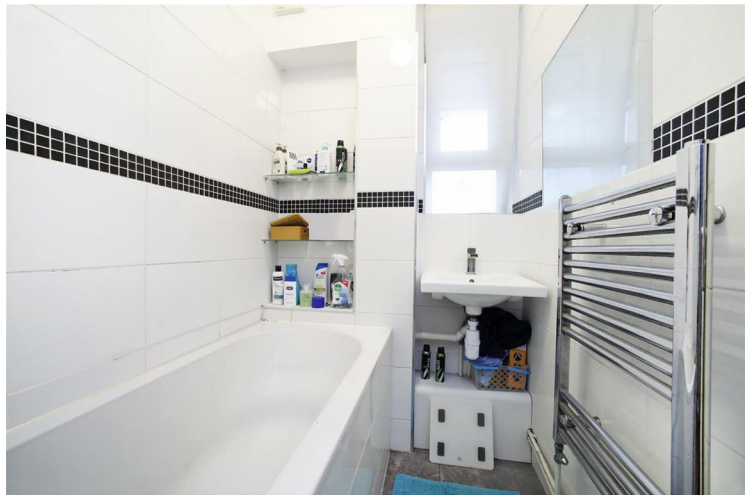
Well presented two bedroom apartment located on Bath Terrace, Borough SE1. The property comprises two double bedrooms, a separate reception room, a modern kitchen, separate wc and a modern bathroom. Offered furnished.

Call the lettings department to reserve a viewing 0207 015 1360.



- Two Double Bedrooms • Wood Flooring Throughout • Great Condition • Superb Location • Offered Furnished • Available 1st May







Energy Efficiency Rating		
	Current	Potential
<i>Very energy efficient - lower running costs</i>		
(92 plus) A		
(81-91) B		
(69-80) C		
(55-68) D		
(39-54) E		
(21-38) F		
(1-20) G		
<i>Not energy efficient - higher running costs</i>		
England & Wales	EU Directive 2002/91/EC 	

Agents Note: Whilst every care has been taken to prepare these particulars, they are for guidance purposes only. All measurements are approximate and are for general guidance purposes only and whilst every care has been taken to ensure their accuracy, they should not be relied upon and potential buyers/tenants are advised to recheck the measurements

Borough Lettings
230 Borough High Street
London
SE1 1JX

020 7015 1360
enquiries@leonardleese.com
www.leonardleese.com

