



OAKFIELD

6



Spring Street, St. Leonards, TN37 6JF

£1,100 Per Calendar Month



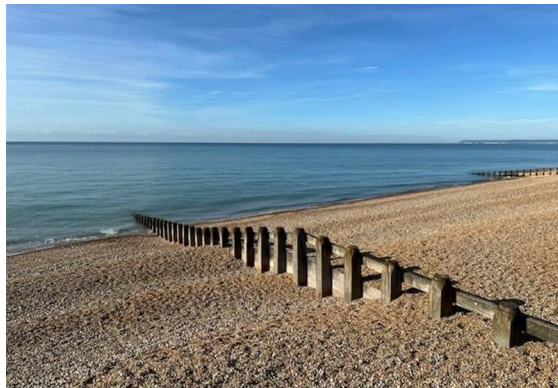
## Spring Street, St. Leonards, TN37 6JF

This well-presented recently decorated two-bedroom terraced house is ideally situated on Spring Street, offering excellent access to Hastings mainline station, Alexandra Park, local shops, and convenient bus routes. The area also benefits from a fantastic selection of amenities, including popular eateries, coffee shops and leisure centre.

Internally, the property comprises two spacious double bedrooms, living room, a well equipped kitchen (fitted with electric oven and hob, washing machine and dishwasher) and modern bathroom with bath over shower, WC and wash basin.

Further benefits include gas central heating and double glazing throughout, and private rear courtyard.

Long Term let available  
Annual income threshold £33,000  
Available mid July 2026





### Living Room

10'10" x 9'9" (3.31m x 2.98m)

### Kitchen

10'4" x 7'11" (3.15m x 2.42m)

### Bedroom One

13'6" x 9'10" (4.12m x 3.00m)

### Bedroom Two

13'6" x 8'0" (4.12m x 2.46m)

### Bathroom

5'11" x 6'5" (1.81m x 1.96m )

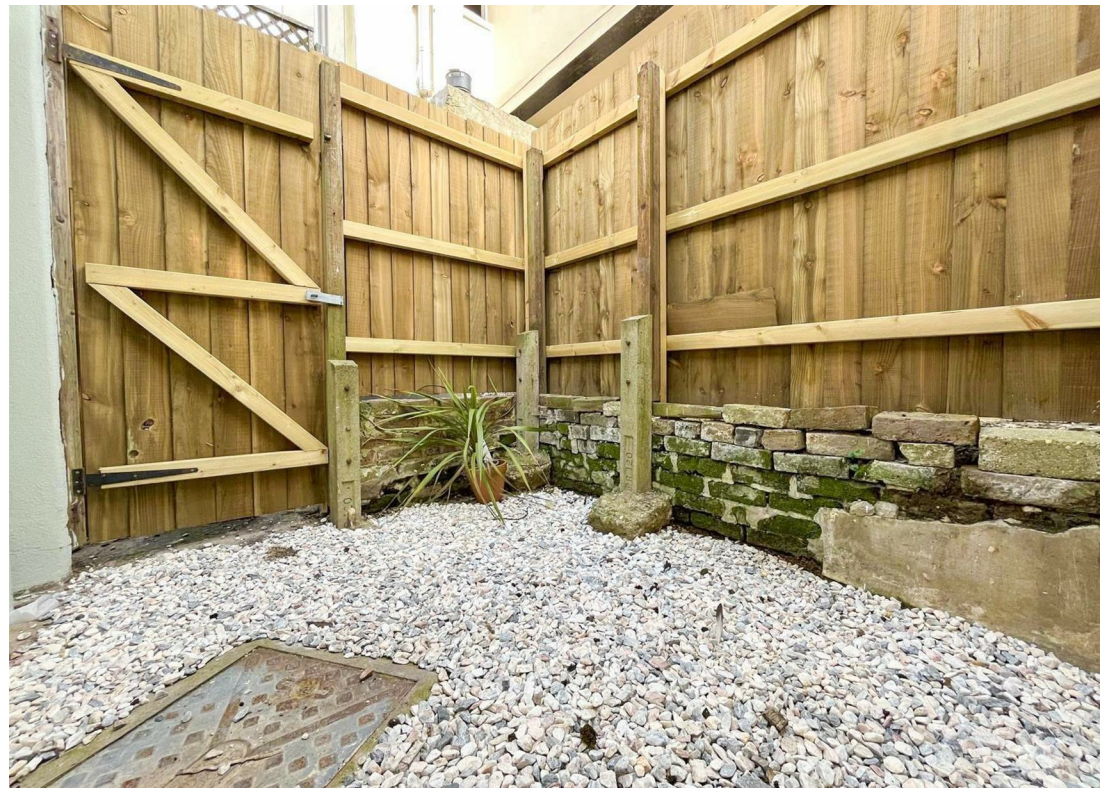
### Courtyard

9'9" x 7'7" (2.98m x 2.32m)

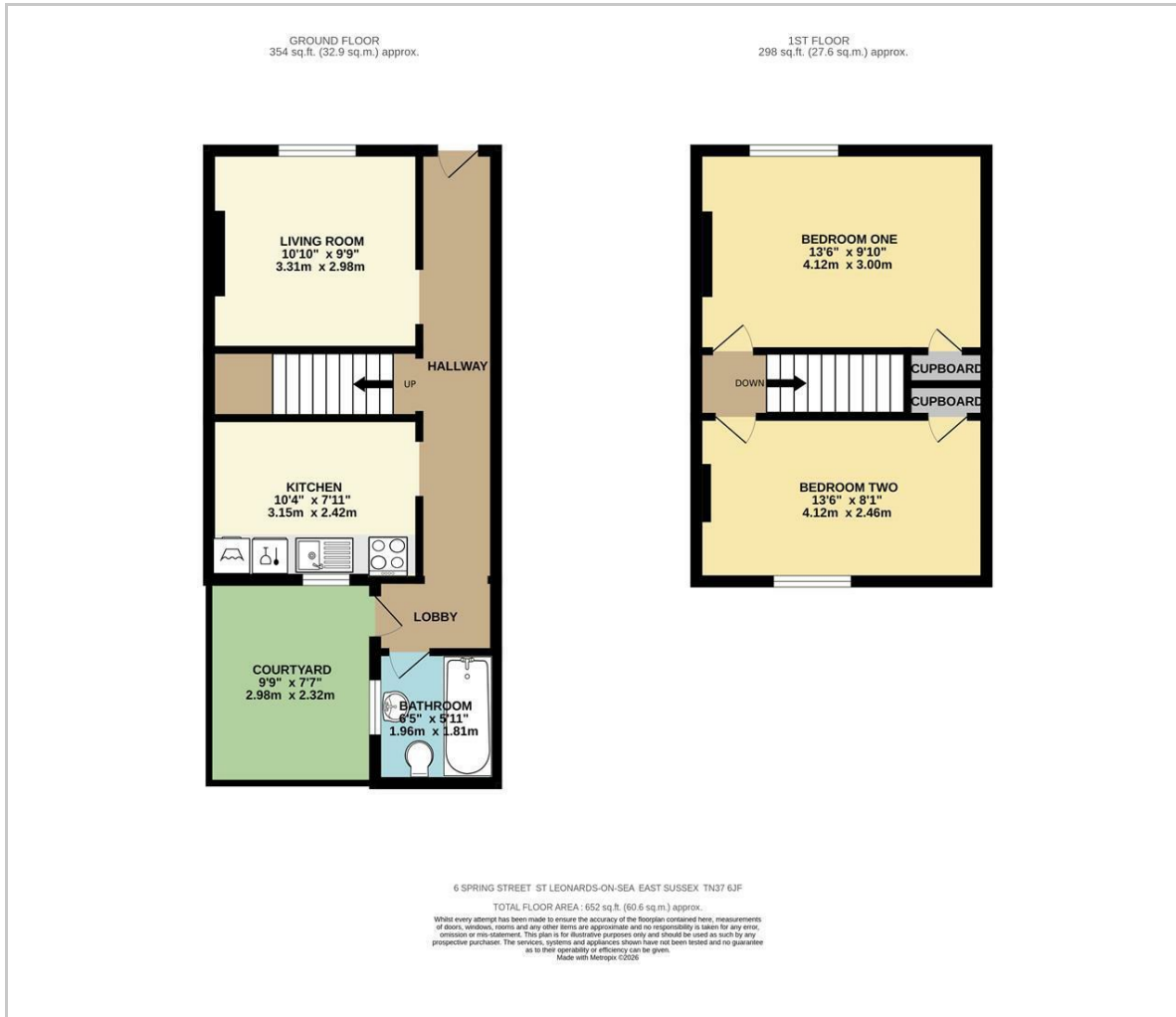
### Appliances

Electric oven and hob, washing machine and dishwasher are supplied by the Landlord

**Council Tax Band - A £1,784.39 per annum**



## Floor Plan

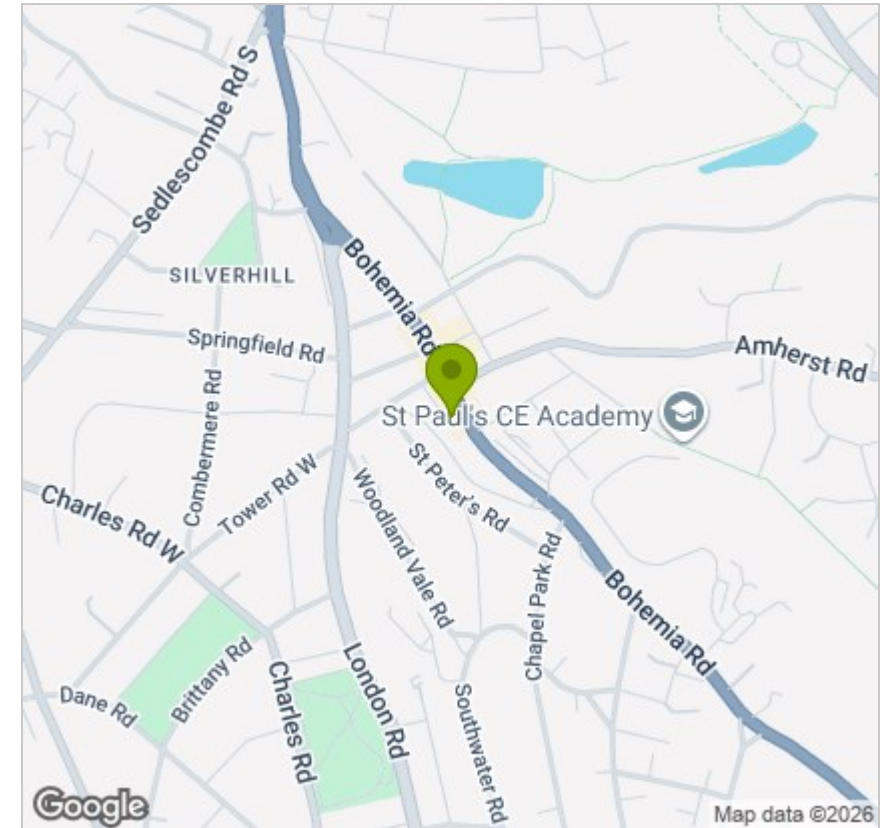


## Viewing

Please contact us on 01424 446644 if you wish to arrange a viewing appointment for this property or require further information.

These particulars, whilst believed to be accurate are set out as a general outline only for guidance and do not constitute any part of an offer or contract. Intending purchasers should not rely on them as statements of representation of fact, but must satisfy themselves by inspection or otherwise as to their accuracy. No person in this firm's employment has the authority to make or give any representation or warranty in respect of the property.

## Area Map



## Energy Efficiency Graph

