

for sale

offers in excess of **£300,000**



Valerian Street Emersons Green Bristol BS16 7JF

Three-bedroom semi-detached home on Valerian Street, nestled in the thriving Lyde Green development. Offering a thoughtful layout over three floors, this property blends modern open plan living with light-filled spaces, ideal for families or professionals seeking comfort, style and convenience.

Valerian Street Emersons Green Bristol BS16 7JF

Entrance Hallway

welcoming entrance hallway leading to:

Open Plan Kitchen Living Area

22' 2" x 12' 2" (6.76m x 3.71m)

Bright, open-plan living, dining and kitchen area, creating a sociable and airy space ideal for modern living. The modern kitchen sits to the front, flowing naturally into the dining and lounge space. At the rear, French doors open onto the garden, bringing in plenty of natural light and offering easy access for outdoor entertaining.

First Floor

leading to bedrooms and family bathroom.

Bedroom Two

12' 2" x 7' 10" (3.71m x 2.39m)

These rooms provide flexibility for children, guests, or a home office.

Bedroom Three

12' 3" x 7' 9" (3.73m x 2.36m)

These rooms provide flexibility for children, guests, or a home

office.

Family Bathroom

modern fitted bathroom suite with contemporary fixtures.

Third Floor

The entire top floor is dedicated to the master bedroom.

Master Bedroom

15' 7" x 12' 3" (4.75m x 3.73m)

featuring Velux windows that fill the space with light. Cleverly designed eaves storage provides practical hidden space without compromising comfort.

Rear Gaden

The private rear garden is perfect for relaxing or entertaining, with direct access from the living area.

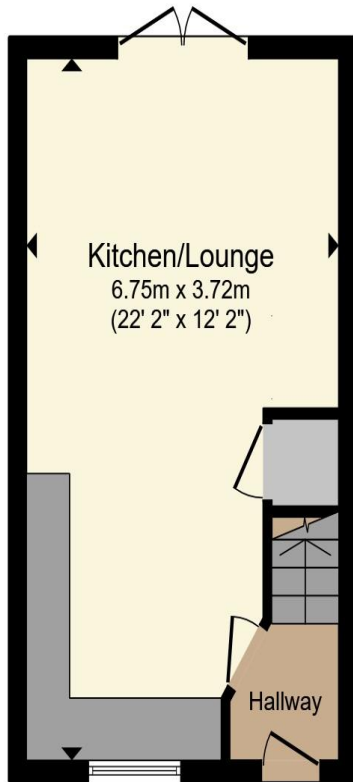
Allocated Parking

to the front of the property.

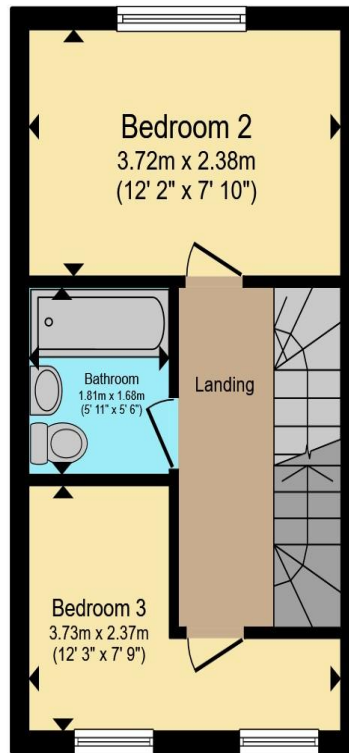




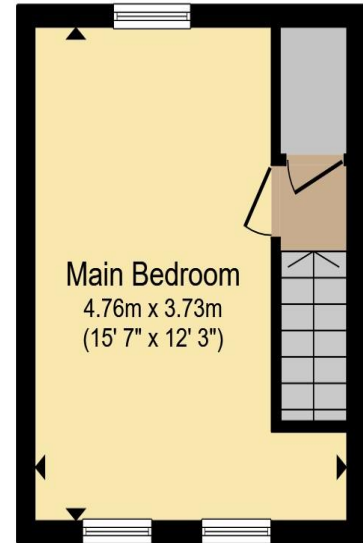




Ground Floor



First Floor



Second Floor

Total floor area 68.0 m² (732 sq.ft.) approx

This floor plan is for illustrative purposes only. It is not drawn to scale. Any measurements, floor areas (including any total floor area), openings and orientation are approximate. No details are guaranteed, they cannot be relied upon for any purpose and they do not form part of any agreement. No liability is taken for any error, omission or misstatement. A party must rely upon its own inspection(s). Powered by www.propertybox.io



To view this property please contact Connells on

T 0117 956 9555

E emersonsgreen@connells.co.uk

2 The Village Emerson Way Emersons Green
BRISTOL BS16 7AE

Property Ref: EME306979 - 0019

Tenure:Freehold EPC Rating: B

Council Tax Band: C

[view this property online connells.co.uk/Property/EME306979](http://connells.co.uk/Property/EME306979)

1. MONEY LAUNDERING REGULATIONS Intending purchasers will be asked to produce identification documentation at a later stage and we would ask for your co-operation in order that there will be no delay in agreeing the sale. 2. These particulars do not constitute part or all of an offer or contract. 3. The measurements indicated are supplied for guidance only and as such must be considered incorrect. Potential buyers are advised to recheck measurements before committing to any expense. 4. We have not tested any apparatus, equipment, fixtures, fittings or services and it is in the buyers interest to check the working condition of any appliances.

Connells Residential is registered in England and Wales under company number 1489613, Registered Office is Cumbria House, 16-20 Hockliffe Street, Leighton Buzzard, Bedfordshire, LU7 1GN. VAT Registration Number is 500 2481 05.

see all our properties at www.connells.co.uk | www.rightmove.co.uk | www.zoopla.co.uk