

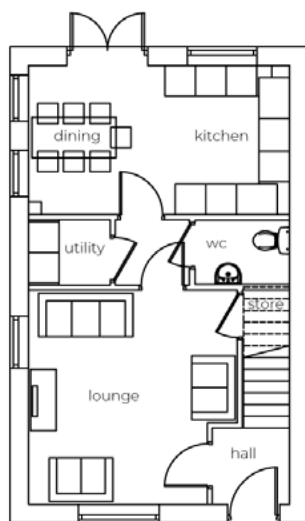
The Dartmoor

4 bedroom detached house with detached single garage/driveway



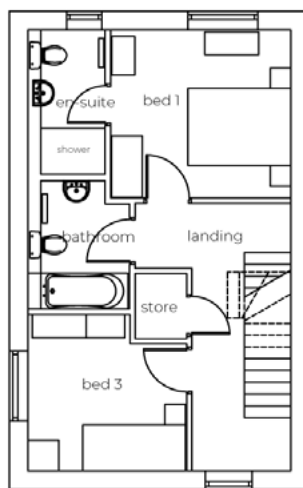
Seddon Homes.co.uk

Ground floor



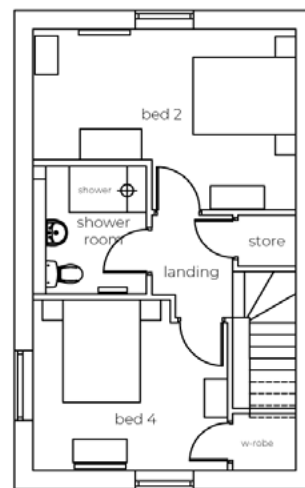
Lounge	13'7" x 13'10"
Kitchen/Dining Area	16'11" x 9'9"
Utility	5'4" x 4'3"
WC	6'2" x 4'3"

First floor



Master Bedroom	11'7" x 10'11"
En Suite	5'1" x 9'8"
Bedroom 3	10'3" x 10'1"
Bathroom	5'8" x 8'0"

Second floor



Bedroom 2	16'11" x 11'8"
Bedroom 4	12'6" x 11'0"
Shower Room	5'0" x 8'4"