



## Leghorn Road, NW10

£550,000

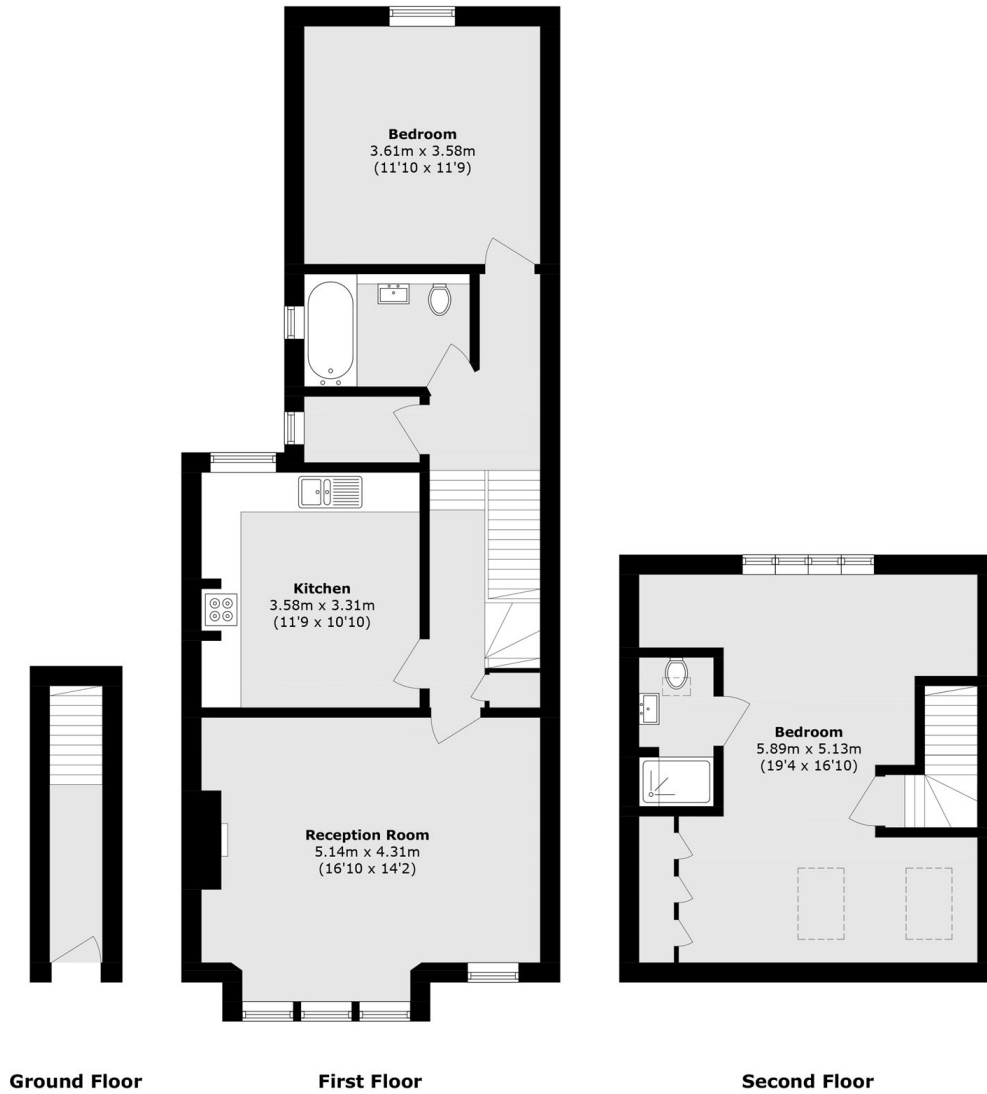
Situated on the first floor of a period conversion, this larger than average two bedroom flat offers a bright reception room featuring a bay window, complemented by a spacious kitchen/dining room and a family bathroom. The loft has been converted to provide a double bedroom with an en-suite shower room.

Leghorn Road is a popular residential street located within easy reach of Kensal Rise and Queen's Park. The area offers convenient access to the independent cafés, restaurants and local amenities of Chamberlayne Road, with Queen's Park and its green open spaces also nearby. Excellent transport links are available from Willesden Junction providing fast and easy access into Central London and beyond.

### Features

- Two Bedrooms
- Two Bathrooms
- Separate Kitchen/Diner
- From Reception with Bay
- Utility Room
- Share of Freehold

# Leghorn Road, London, NW10



Total area (approx.): 97.6 sq. m (1050.6 sq. ft)