



Highcroft Hall, Highcroft Road, Birmingham



Property Description

Occupying an enviable position within the prestigious Grade II Listed Highcroft Hall development, this beautifully presented duplex apartment offers a rare blend of character and contemporary living. Boasting generous proportions throughout, the accommodation includes a spacious lounge, fitted kitchen, two double bedrooms, bathroom and two separate dressing rooms, making it an ideal purchase for professionals, downsizers or those looking for something a little different.

Retaining an abundance of original charm including impressive ceiling heights, large feature windows and striking architectural details, the property enjoys a unique feel whilst benefiting from modern conveniences. Residents also enjoy secure communal entrance, allocated parking and beautifully maintained communal grounds.

Situated within easy reach of Erdington, Sutton Coldfield and Birmingham City Centre, Highcroft Hall offers excellent transport links together with nearby shops, parks and amenities. Viewing is highly recommended to fully appreciate everything this distinctive home has to offer.

Lounge

A spacious reception room featuring high ceilings, large windows allowing plenty of natural light and access to the inner hallway.

Kitchen

Fitted with a range of wall and base units incorporating work surfaces, sink with drainer, integrated oven, hob and space for further appliances.

Bedroom One

A generous double bedroom with access to the dressing room.

Bathroom

Comprising panelled bath with shower over, wash hand basin and low level WC.

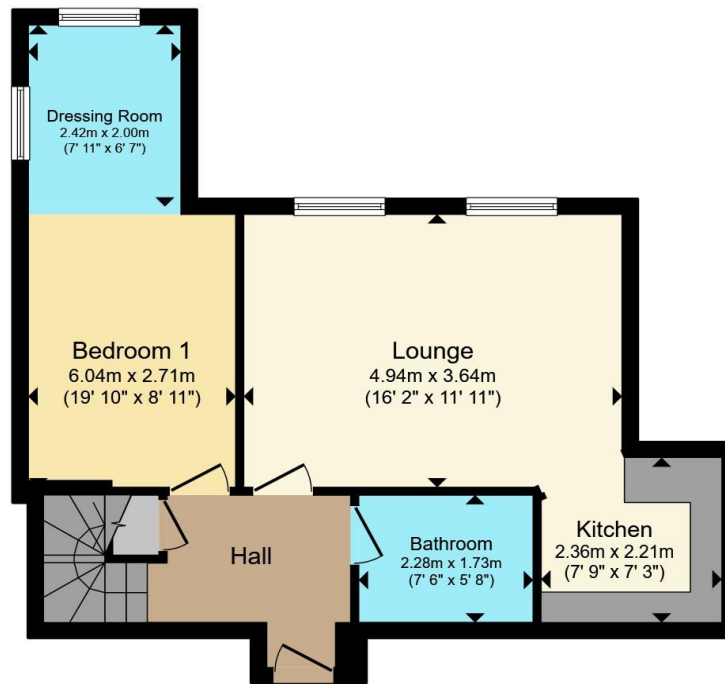
Bedroom Two

A further double bedroom enjoying a private position on the first floor.

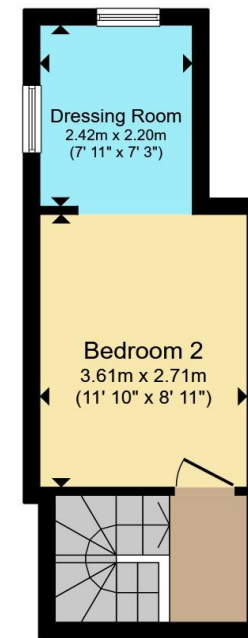








Ground Floor



First Floor

Total floor area 69.7 m² (750 sq.ft.) approx

This floor plan is for illustrative purposes only. It is not drawn to scale. Any measurements, floor areas (including any total floor area), openings and orientation are approximate. No details are guaranteed, they cannot be relied upon for any purpose and they do not form part of any agreement. No liability is taken for any error, omission or misstatement. A party must rely upon its own inspection(s). Powered by www.propertybox.io



To view this property please contact Burchell Edwards on

T 0121 373 6320
E erdington@burchelledwards.co.uk

Unit 3 Queens Court, Gravelly Hill Erdington
BIRMINGHAM B23 6BJ

EPC Rating: C Council Tax
Band: C

Service Charge: Ask
Agent

Ground Rent:
Ask Agent

Tenure: Leasehold

view this property online burchelledwards.co.uk/Property/ERD208028

This is a Leasehold property. We are awaiting further details about the Term of the lease. For further information please contact the branch. Please note additional fees could be incurred for items such as Leasehold packs.



1. MONEY LAUNDERING REGULATIONS Intending purchasers will be asked to produce identification documentation at a later stage and we would ask for your co-operation in order that there will be no delay in agreeing the sale. 2. These particulars do not constitute part or all of an offer or contract. 3. The measurements indicated are supplied for guidance only and as such must be considered incorrect. Potential buyers are advised to recheck measurements before committing to any expense. 4. We have not tested any apparatus, equipment, fixtures, fittings or services and it is in the buyers interest to check the working condition of any appliances.

Burchell Edwards is a trading name of Connells Residential which is registered in England and Wales under company number 1489613, Registered Office is Cumbria House, 16-20 Hockliffe Street, Leighton Buzzard, Bedfordshire, LU7 1GN. VAT Registration Number is 500 2481 05.

See all our properties at www.burchelledwards.co.uk | www.rightmove.co.uk | www.zoopla.co.uk

Property Ref: ERD208028 - 0002