



Price

£300,000

Freehold

3x  1x  1x 

Queens Grove,
Waterlooville,
Hampshire, PO7

OVER 60?

Secure this property
for up to **59% less!**

cubitt & west
Helping you move forwards



Main features

- Offered with no forward chain
- Single storey extension with French doors onto garden
- Newly fitted kitchen
- Private and sunny aspect rear garden
- Close to local amenities and travel links

Accommodation

GROUND FLOOR

Entrance Hall

Kitchen: 11'7 x 11'2 (3.53m x 3.41m)

Lounge: 13'4 x 13'2 (4.07m x 4.02m)

Bedroom 1: 14'5 x 11'1 (4.40m x 3.38m)

Bedroom 2: 13'3 x 10'7 (4.04m x 3.23m)

Bedroom 3: 11'7 x 7'7 (3.53m x 2.31m)

Shower Room

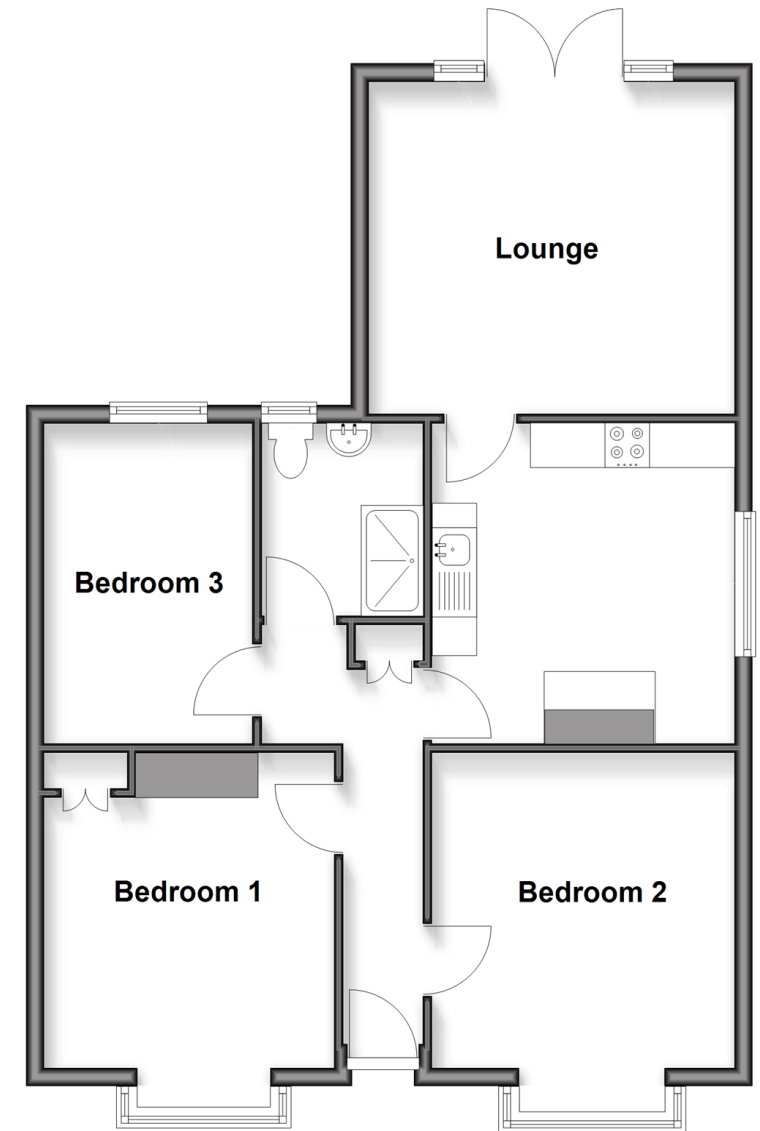
OUTSIDE

Front and Rear Gardens

Off Road Parking

Ground Floor

Approx. 72.4 sq. metres (779.2 sq. feet)



Call Waterlooille - 02392 267244 ■ cubittandwest.co.uk

■ Through a Homewise Home For Life Plan people aged 60+ can secure this property for up to 59% less, by purchasing a Lifetime Lease



42410943/20260324/EH/EC