



PCM

**£2,300 PCM**

**Boardwalk Place**

London, E14 5GB



Stunning two bedroom, two bathroom apartment set within the highly sought after Boardwalk Place development. Walking distance to Canary Wharf.

Secure and gated development overlooking the dock, with concierge service and an allocated parking space.

Comprising of a naturally bright and airy reception room, with huge double glazed windows, and access to a private balcony looking out onto the docks. Partially open plan kitchen, fitted with modern appliances including dish washer. Large master bedroom with a walk in wardrobe and luxury en-suite. Second bedroom is a good sized double room, bathroom suite tiled with shower.

Superb transport links including Blackwall and Poplar DLR stations, easy access into Canary Wharf and the City.

Furnished.

Available of of February

5 Weeks Deposit: £2,653.84

Council Tax: Band F

12 month contract: Breakclause subject to offer

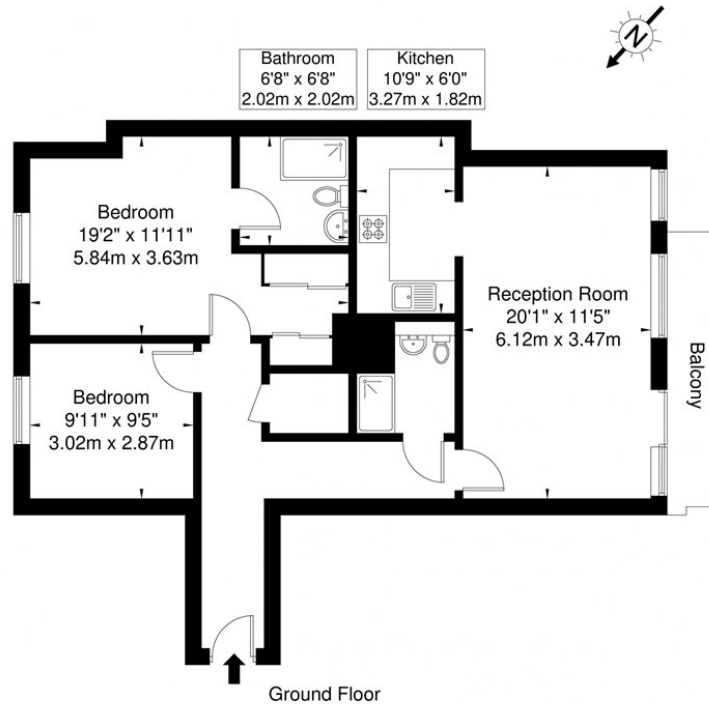






## Boardwalk Place, Docklands, E14 5GB

Approx. Gross Internal Area = 76.3 sq m / 821 sq ft



Ref

Copyright **BLEU PLAN**

Disclaimer : Floor plan measurements are approximate and are for illustrative purposes only. While we do not doubt the floor plan accuracy and completeness, you or your advisors should conduct a careful, independent investigation of the property in respect of monetary valuation

Energy Efficiency Rating		
	Current	Potential
Very energy efficient - lower running costs		
(92 plus) <b>A</b>		
(81-91) <b>B</b>		
(69-80) <b>C</b>		<b>76</b>
(55-68) <b>D</b>		
(39-54) <b>E</b>	<b>51</b>	
(21-38) <b>F</b>		
(1-20) <b>G</b>		
Not energy efficient - higher running costs		
<b>England &amp; Wales</b>	EU Directive 2002/91/EC	

Agents Note: Whilst every care has been taken to prepare these particulars, they are for guidance purposes only. All measurements are approximate and are for general guidance purposes only and whilst every care has been taken to ensure their accuracy, they should not be relied upon and potential buyers/tenants are advised to recheck the measurements

**OFFICE ADDRESS**  
88 Cheshire Street  
London  
E2 6EH

**OFFICE DETAILS**  
0207 739 6969  
info@peachproperties.com  
www.peachproperties.com