



118 Canterbury Road

Kennington Ashford, TN24 9QA

£1,350 Per Month

A well presented three bedroom semi detached house situated in Kennington with double glazing and gas fired central heating. Accommodation comprises entrance hall, through lounge/diner & kitchen on the ground floor together with two double bedrooms, one single bedroom and bathroom with shower over bath on the first floor. Outside there is a front garden laid to lawn with flower borders and a rear garden laid to lawn and well screened by fencing and numerous shrubs. There is a garden shed and paved patio, outside tap and brick built shed with side gate to side entrance. A well located home ready to be occupied.

Security deposit £1557.00
Council Tax - Band C
EPC - Rating D

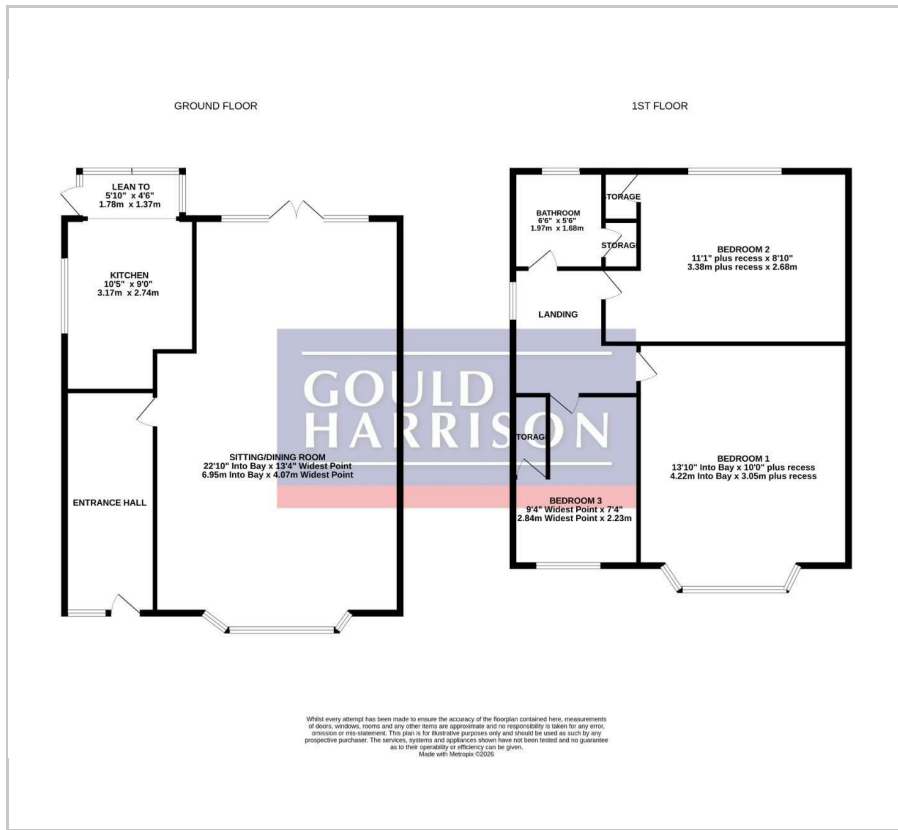
Viewing

Please contact our Ashford Office on 01233 646411 if you wish to arrange a viewing appointment for this property or require further information.

- RECENTLY DECORATED FAMILY HOME
- WELL LOCATED FOR THE TOWN CENTRE AND M20
- GOOD SIZED THROUGH LOUNGE
- KITCHEN
- FIRST FLOOR BATHROOM
- THREE BEDROOMS
- FRONT AND REAR GARDENS
- GAS CENTRAL HEATING AND DOUBLE GLAZING
- CALL US NOW TO BOOK YOUR VIEWING



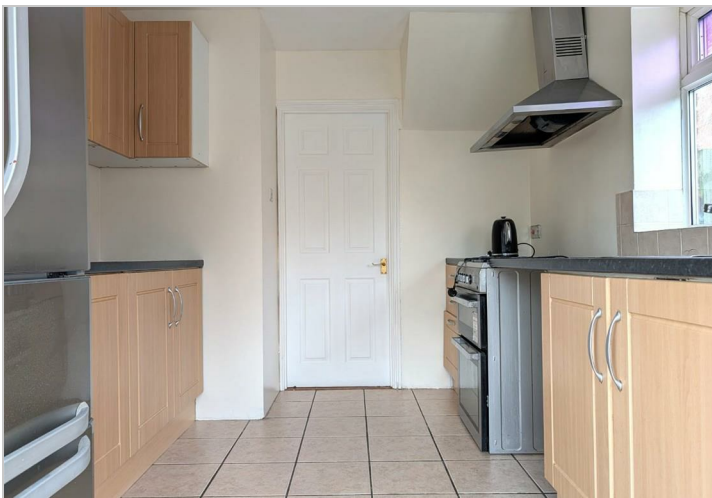
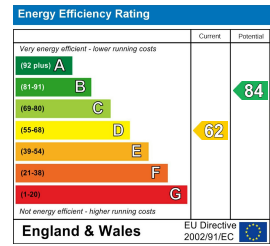
Floor Plan



Area Map



Energy Efficiency Graph



These particulars, whilst believed to be accurate are set out as a general outline only for guidance and do not constitute any part of an offer or contract. Intending purchasers should not rely on them as statements of representation of fact, but must satisfy themselves by inspection or otherwise as to their accuracy. No person in this firm's employment has the authority to make or give any representation or warranty in respect of the property.