



Chieveley Close | Etchinghill, Rugeley | WS15 2TF

Offers In The Region Of £220,000



Summary

** NO CHAIN ** POPULAR LOCATION ** IDEAL FOR FIRST TIME BUYERS ** THREE BEDROOMS ** LIVING ROOM ** KITCHEN DINER ** SINGLE GARAGE ** OFF ROAD PARKING ** CLOSE TO AMENITIES ** VIEWING ADVISED **

WEBBS ESTATE AGENTS are pleased to market this three bedroom semi detached home, located in a popular area of Rugeley on Chieveley Close. The property would be ideally suited to a first time buyer looking to get their foot on the property ladder. Conveniently located close to amenities, schools and useful transport links. The internal accommodation briefly comprises; entrance hallway, living room, kitchen diner, three bedrooms and a family bathroom. The property also benefits from a driveway, rear garden and single garage.

Key Features

- NO CHAIN
- IDEAL FOR FIRST TIME BUYERS
- LIVING ROOM
- SINGLE GARAGE
- CLOSE TO AMENITIES
- POPULAR LOCATION
- THREE BEDROOMS
- KITCHEN DINER
- OFF ROAD PARKING
- VIEWING ADVISED

Rooms and Dimensions

HALLWAY

LOUNGE

14'7" x 11'5" (4.47m x 3.48m)

KITCHEN DINER

15'3" x 14'7" (4.66m x 4.47m)

LANDING

BEDROOM ONE

12'4" x 8'7" (3.77m x 2.62m)

BEDROOM TWO

11'5" x 8'4" (3.48m x 2.56m)

BEDROOM THREE

8'0" x 6'0" (2.44m x 1.83m)

FAMILY BATHROOM

GARAGE

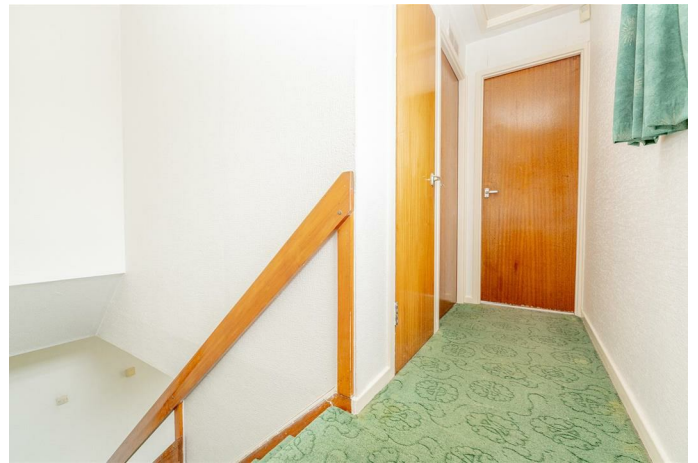
GENEROUS DRIVEWAY

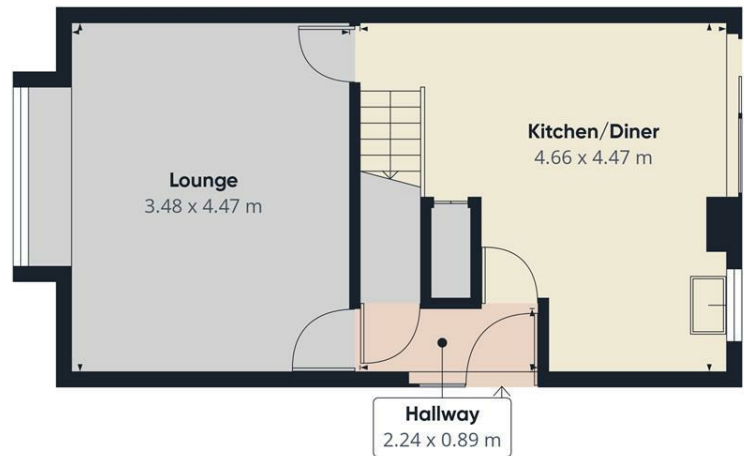
FRONT & REAR GARDENS

Identification Checks (R)

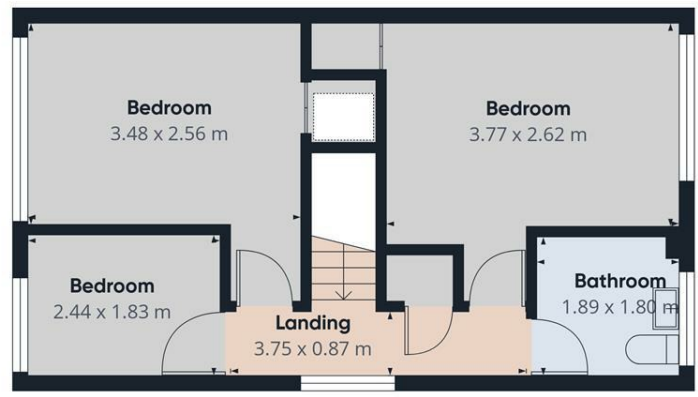
Agents Notes







Ground Floor



Floor 1



Approximate total area⁽¹⁾
71.7 m²

(1) Excluding balconies and terraces

Calculations reference the RICS IPMS 3C standard. Measurements are approximate and not to scale. This floor plan is intended for illustration only.

GIRAFFE360

Webbs Estate Agents - endeavour to maintain accurate depictions of properties in Virtual Tours, Floor Plans and descriptions, however, these are intended only as a guide and purchasers must satisfy themselves by personal inspection.

Energy Efficiency Rating		Environmental Impact (CO ₂) Rating	
Current	Potential	Current	Potential
100-125 kWh/m ² /year A	100-125 kWh/m ² /year A	100-125 g/m ² /year A	100-125 g/m ² /year A
125-150 kWh/m ² /year B	125-150 kWh/m ² /year B	125-150 g/m ² /year B	125-150 g/m ² /year B
150-175 kWh/m ² /year C	150-175 kWh/m ² /year C	150-175 g/m ² /year C	150-175 g/m ² /year C
175-200 kWh/m ² /year D	175-200 kWh/m ² /year D	175-200 g/m ² /year D	175-200 g/m ² /year D
200-225 kWh/m ² /year E	200-225 kWh/m ² /year E	200-225 g/m ² /year E	200-225 g/m ² /year E
225-250 kWh/m ² /year F	225-250 kWh/m ² /year F	225-250 g/m ² /year F	225-250 g/m ² /year F
250-300 kWh/m ² /year G	250-300 kWh/m ² /year G	250-300 g/m ² /year G	250-300 g/m ² /year G
EU Directive 2002/91/EC	EU Directive 2002/91/EC	EU Directive 2002/91/EC	EU Directive 2002/91/EC
England & Wales	England & Wales	England & Wales	England & Wales