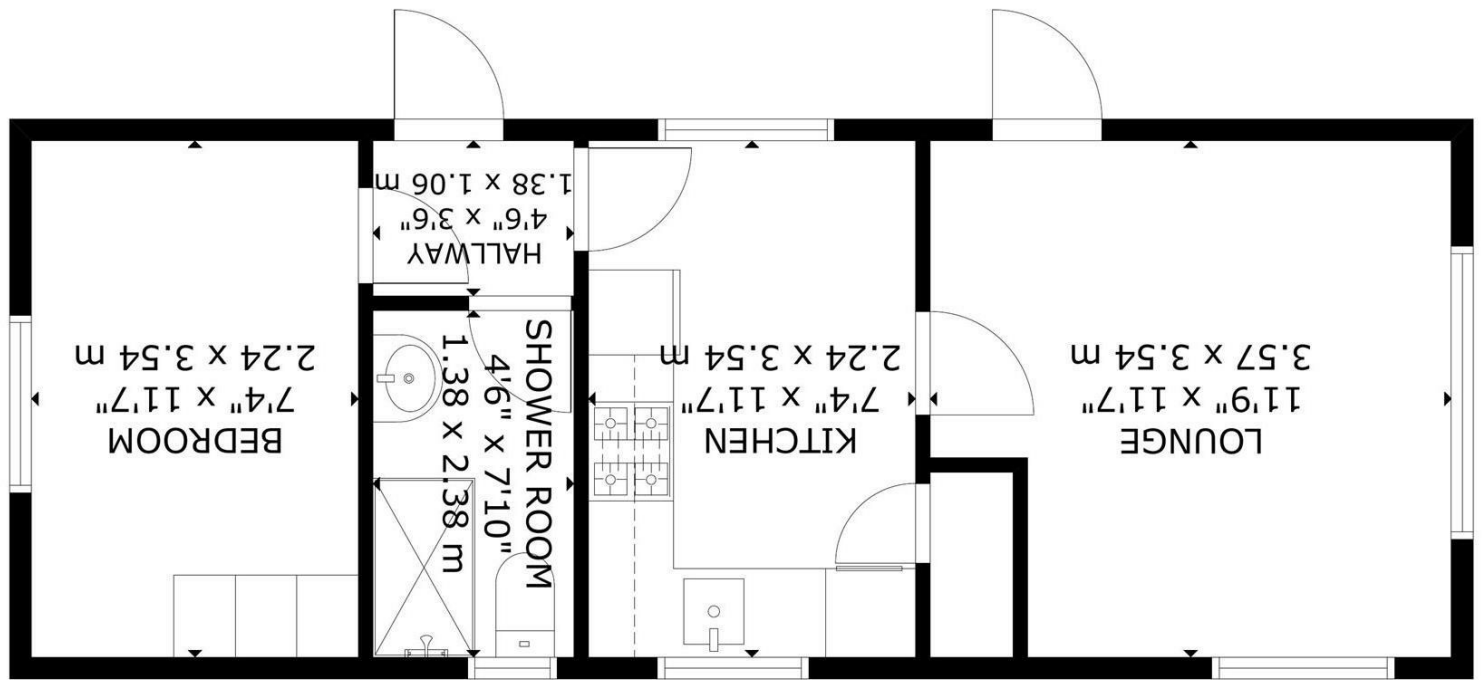


FLOOR 1

SIZE AND DIMENSIONS ARE APPROXIMATE, ACTUAL MAY VARY  
TOTAL: 34 m<sup>2</sup>/371 sq ft  
GROSS INTERNAL AREA  
FLOOR 1: 34 m<sup>2</sup>/371 sq ft



Bakers Farm, Upper Horsebridge



stevens  
and carter

- 3D Virtual Tour
- Over 55's Only
- Refurbished Throughout
- 32x12 FT
- Full Residential Park
- Low Maintenance Wrap Around Garden
- Driveway
- Kitchen-Breakfast Room
- Low Monthly Pitch Fee
- Council Tax Band A



Freehold

£100,000

Guide Price

1 BEDROOM

1 RECEPTION

1 BATHROOM

0 GARAGE

Bakers Farm, Upper Horsebridge

# Bakers Farm, Upper Horsebridge

## DESCRIPTION

Guide Price £100,000 - £110,000 - Situated within the popular Bakers Farm Park in Horsebridge Hailsham, this beautifully refurbished 1995 Homeseeker Langdale offers comfortable and low maintenance living exclusively for the over 55's. Measuring approximately 32ft x 12ft, the property is presented in excellent order throughout and benefits from a bright kitchen-breakfast room, spacious living accommodation, modern shower room, double bedroom, private driveway parking and a wrap around garden designed for ease of maintenance. The home is heated via LPG Calor Gas and also enjoys the advantage of a low monthly pitch fee, forming part of a fully residential park community.

Horsebridge is a peaceful countryside setting surrounded by open fields and scenic walks, whilst remaining conveniently positioned for day to day amenities. Nearby Hailsham offers a wide range of shops, supermarkets, cafés, healthcare facilities and leisure amenities, with further shopping available in Heathfield and Eastbourne. Regular bus services operate close by providing links into Hailsham and surrounding areas, making the location ideal for those seeking a quieter lifestyle without feeling isolated. The surrounding Sussex countryside provides an abundance of walking routes, rural pubs and places of interest to enjoy throughout the year.



# Bakers Farm, Upper Horsebridge

