



**Forrester Way, London E15**  
£400,000 Leasehold







## Description

Situated in the heart of Stratford's remarkable transformation, Giles House represents modern London living at its most connected. This vibrant district combines Olympic legacy with cutting-edge development, where world-class amenities meet outstanding transport infrastructure.

This well-proportioned one-bedroom apartment showcases contemporary design with practical elegance. The open-plan reception benefits from integrated kitchen appliances that maintain clean lines throughout, whilst French doors open onto a private balcony that wraps around to serve the bedroom too, creating flexible outdoor living space bathed in natural light. The modern bathroom completes this thoughtfully designed home.

Residents of Giles House enjoy exclusive access to a fully equipped gymnasium, perfect for maintaining an active lifestyle without leaving the building. The 24-hour concierge service provides security, convenience and peace of mind, managing deliveries and visitors with professional efficiency.

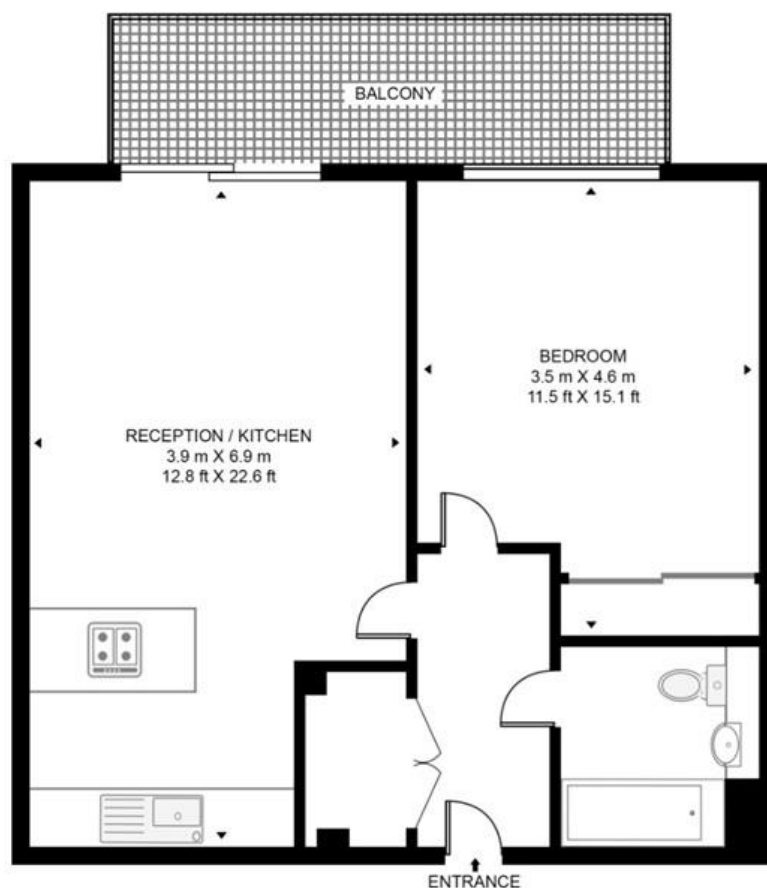
- Modern one bedroom apartment
- Second floor with lift access
- Dual-aspect balcony access
- Residents' gym
- 24-hour Concierge service
- Central Stratford location
- Queen Elizabeth Olympic Park
- Westfield shopping nearby
- Excellent transport connections
- Long lease

# Floorplan

554 sq ft | 52 sq m

## GILES HOUSE

APPROXIMATE GROSS INTERNAL FLOOR AREA 554 SQ.FT (51.5 SQ.M)



## SECOND FLOOR



**HDVA**

This floor plan has been defined by the RICS Code of Measurement. This floor plan and all others are for approximate representative purposes only and upon usage is agreed to as such by the client.

WWW: [hdvirtualart.com](http://hdvirtualart.com) | TEL: 0203.974.1567 | EMAIL: [info@hdvirtualart.com](mailto:info@hdvirtualart.com)

Stratford  
5 Station Street,  
London E15 1DA  
+4420 3147 1500  
[Lettingsstratford@eu.jll.com](mailto:Lettingsstratford@eu.jll.com)

*Urban living, your way.*

[jll.co.uk/residential](http://jll.co.uk/residential)

© 2019 Jones Lang LaSalle IP, Inc. All rights reserved. All information contained herein is from sources deemed reliable; however, no representation or warranty is made to the accuracy thereof.

