

Cromwell Road, SW5

£807 Per week

NO HMO A large and spacious three bedroom flat situated on the fourth floor with lift access. The property has two bathrooms, with wooden flooring throughout and open plan living.

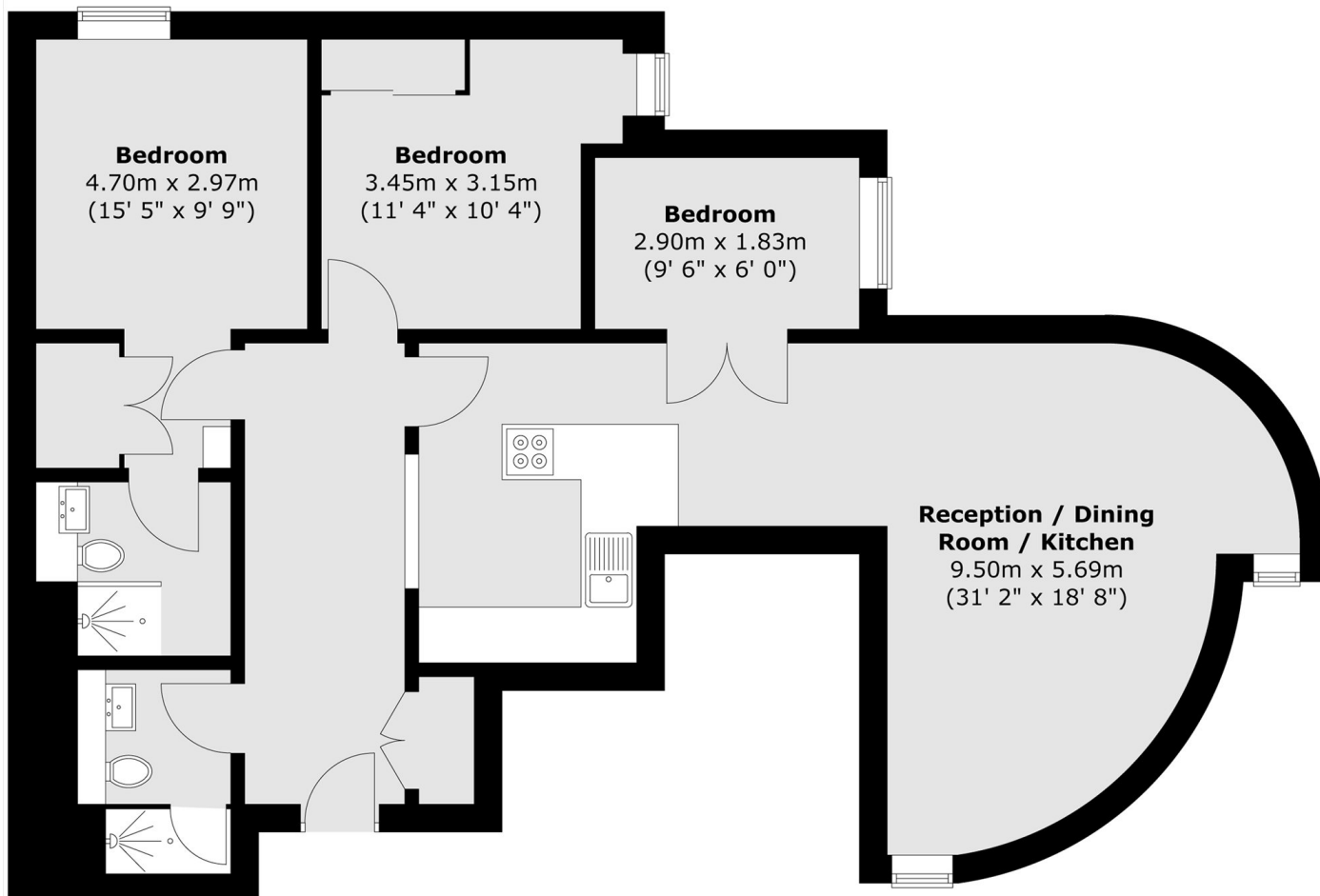
The property is very well located for amenities and transport links of both Gloucester Road and Earl's Court, with Gloucester Road tube station only 0.3 miles away.

Features

- Three Bedrooms
- Two Bathrooms
- Open Plan
- Wooden Floors
- Built in Storage
- Lift

Cromwell Road, London, SW5

Fourth Floor



Total area (approx.) : 82.7 sq. m (890 sq. ft)