



LEASEHOLD

Apartment

MARKET PLACE GREAT YARMOUTH NR30 1NB

Price Guide

£100,000

FEATURES

- Two Bedrooms
- 2nd Floor Apartment
- Kitchen
- Walk To Work
- No Parking
- Large Sitting Room
- Town Centre Location
- Bathroom
- Walk To The Beach
- No Chain



2 Bedroom Apartment located in Great Yarmouth

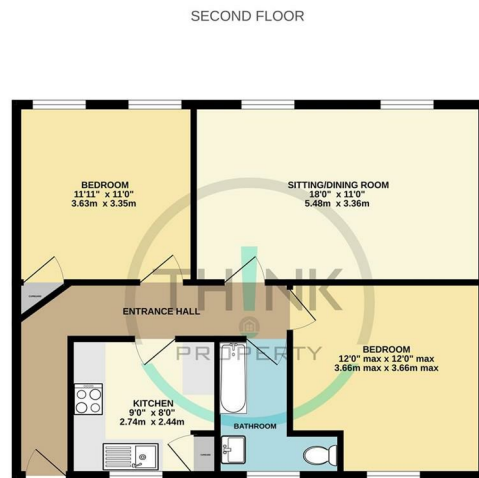
Nestled in the heart of Great Yarmouth, this charming two-bedroom second-floor apartment offers an excellent opportunity for both first-time buyers and investors alike. Located on Market Place, the property is just a short stroll from the vibrant town centre and the picturesque seafront, making it an ideal spot for those who appreciate coastal living.

Upon entering, you will find a spacious separate living room that provides a welcoming atmosphere, perfect for relaxation or entertaining guests. The apartment features a well-appointed separate kitchen, allowing for culinary creativity, and a family bathroom that caters to all your needs. Both bedrooms are generously sized, ensuring comfort and privacy.

The property benefits from gas central heating and double-glazed windows, ensuring warmth and energy efficiency throughout the year. Newly laid carpets and fresh paintwork enhance the overall appeal, making this apartment ready for you to move in without delay.

While there is no dedicated parking, a car park is conveniently located just opposite, along with bus stops for easy access to local transport. With no onward chain, this property presents a seamless transition for owner-occupiers or a fantastic investment opportunity.

Do not miss out on this great value apartment in a prime location. Call today to arrange a viewing and discover your new home or investment in Great Yarmouth.



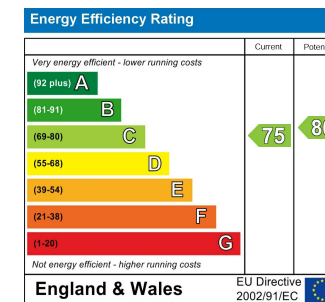
While every effort has been made to ensure the accuracy of the floorplan, it is not intended to be used as a substitute for a professional survey. The floorplan is for guidance purposes only and should not be used as a basis for any financial or legal decision. The floorplan is not intended to be used as a basis for any financial or legal decision. The floorplan is not intended to be used as a basis for any financial or legal decision. Made with Metaplan (2024)

Call us on
01603 338433

norwich@thinkproperty.ltd
<https://www.thinkproperty.ltd/>

Council Tax Band

A



Agents Note: Whilst every care has been taken to prepare these particulars, they are for guidance purposes only. All measurements are approximate and are for general guidance purposes only and whilst every care has been taken to ensure their accuracy, they should not be relied upon and potential buyers are advised to recheck the measurements.

