



## Voltaire Road, SW4

£2,600 Per calendar month

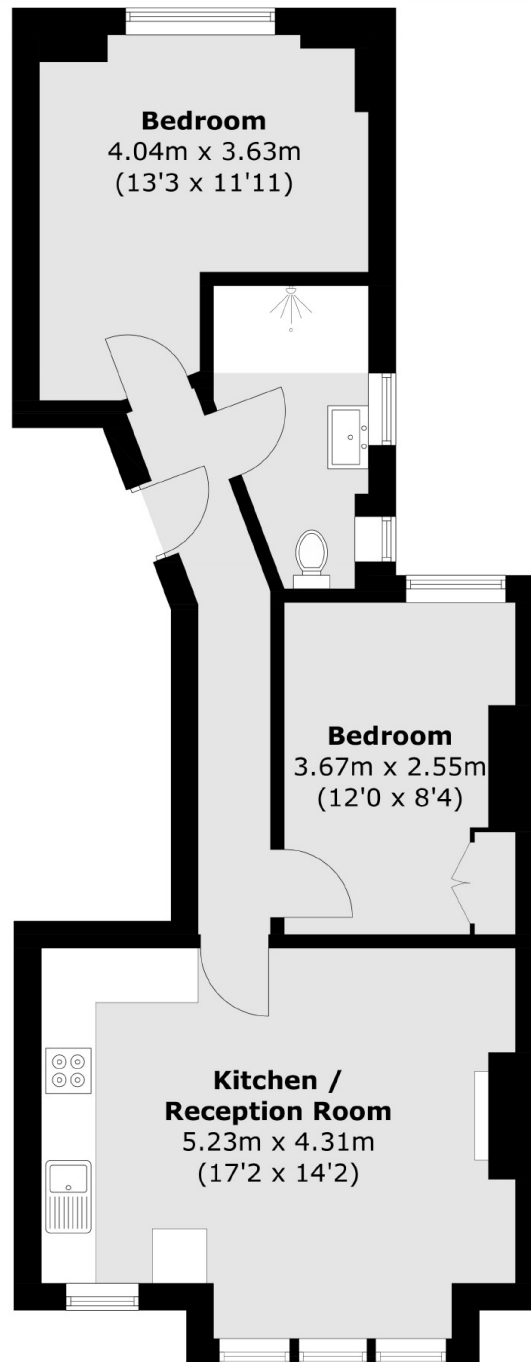
This first floor two double bedroom property in the heart of Clapham, has been recently refurbished and comes with an open plan reception room, kitchen, neutral interior and a modern bathroom.

Located in Clapham North, moments from Clapham High Street's numerous shops, restaurants and bars. With both Clapham North tube and Clapham High Street overground.

### Features

- Open Plan Reception
- Two Double Bedrooms
- Neutral Interior
- Modern Bathroom
- Recently Refurbished
- Local Amenities

# Voltaire Road, London, SW4



Total area (approx.): 54.1 sq. m (582.3 sq. ft)