



**AN EXTENDED DETACHED FOUR BEDROOM PROPERTY ON A LARGE CORNER PLOT  
WITH A SECLUDED PRIVATE GARDEN AND OFF STREET PARKING**

Hallam Gardens, Pinner, Middlesex, HA5 4PT

**ROBSONS**

Hallam Gardens, Pinner, Middlesex, HA5 4PT

**FOUR DOUBLE BEDROOMS • PRINCIPAL  
BEDROOM WITH EN-SUITE AND FITTED  
WARDROBES • FAMILY BATHROOM • OPEN  
PLAN KITCHEN & RECEPTION ROOM WITH  
BI-FOLD DOORS LEADING OUT TO GARDEN •  
GARDEN WITH LARGE PATIO AREA**

**Description**

This character detached family home boasts four double bedrooms and is situated on a large corner plot with a large private secluded rear garden and off street parking.

The ground floor comprises an inviting entrance hall that leads to a spacious utility area and a separate study, providing versatility for modern family living. The contemporary kitchen is fully integrated and includes a central island, seamlessly flowing into the open-plan dining and reception areas. Bi-fold doors open out onto the garden patio, enhancing the indoor-outdoor living experience.

On the first floor, the master bedroom is complemented by an en-suite bathroom and built-in wardrobes, offering both comfort and practicality. Three further double bedrooms, each with fitted wardrobes, are served by a well-appointed family bathroom.





Hallam Gardens is a peaceful, tree-lined road located just a short walk from Hatch End high street which boasts a variety of boutique shops, restaurants, coffee houses and popular supermarkets. Transport facilities include local bus links and the Overground at Hatch End rail station, with the Metropolitan Line also nearby at Pinner tube station. Both of these lines provide a fast and frequent service into the heart of Central London and beyond. The area is well served for primary and secondary schooling including Grimsdyke and Pinnerwood schools, children's parks/playgrounds and recreational facilities.

### **Additional Information**

Tenure: Freehold

Local Authority: London Borough of Harrow

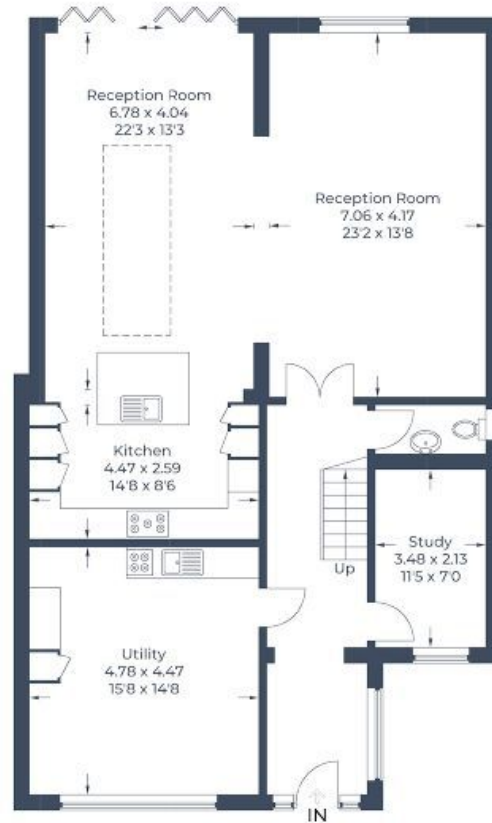
Council Tax Band: G

Energy Efficiency Rating: C

For additional information, please refer to [www.robsonswb.com](http://www.robsonswb.com) or call us on: 020 8866 8083.



Approximate Gross Internal Area  
Ground Floor = 122.6 sq m / 1,320 sq ft  
First Floor = 72.9 sq m / 785 sq ft  
Total = 195.5 sq m / 2,105 sq ft



**Ground Floor**



**First Floor**

Illustration for identification purposes only,  
measurements are approximate, not to scale.  
© CJ Property Marketing Produced for Robsons

**ROBSONS**

1 High Street, Pinner HA5 5PJ  
Tel: 020 8866 8083 Email: [pinner@robsonswb.com](mailto:pinner@robsonswb.com)

[www.robsonswb.com](http://www.robsonswb.com)

SCAN TO VISIT



OUR WEBSITE

Important notice: Robsons, their clients and any joint agents give notice that 1: They are not authorised to make or give any representations or warranties in relation to the property either here or elsewhere, either on their own behalf or on behalf of their client or otherwise. They assume no responsibility for any statement that may be made in these particulars. These particulars do not form part of any offer or contract and must not be relied upon as statements or representations of fact. 2: Any areas, measurements or distances are approximate. Plot sizes and dimensions are taken from Promap and are approximate. The text, photographs and plans are for guidance only and are not necessarily comprehensive. It should not be assumed that the property has all necessary planning, building regulation or other consents and Robsons have not tested any services, equipment or facilities. Purchasers must satisfy themselves by inspection or otherwise.