

## Cannon Hill Lane, SW20

£3,900 Per calendar month

SHORT LET (All Bills Included) - A spacious three bedroom terraced house offering two reception rooms on the ground floor and three double bedrooms on the first floor. The bright open plan kitchen, living and dining space creates an ideal space for family life and entertaining.

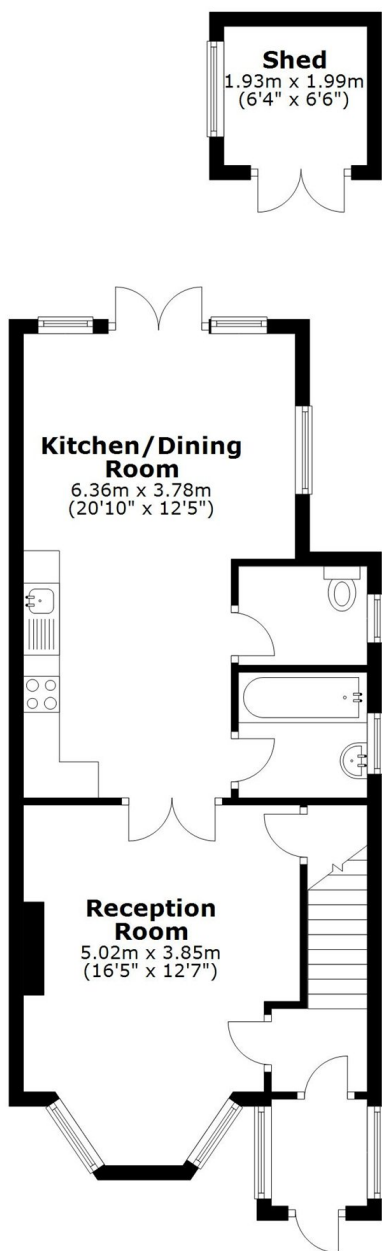
Cannon Hill Lane is a short walk to Cannon Hill Common, as well as the famous National Trust Morden Hall Park and allows easy access to the A3 and local bus services to Raynes Park and Wimbledon.

### Features

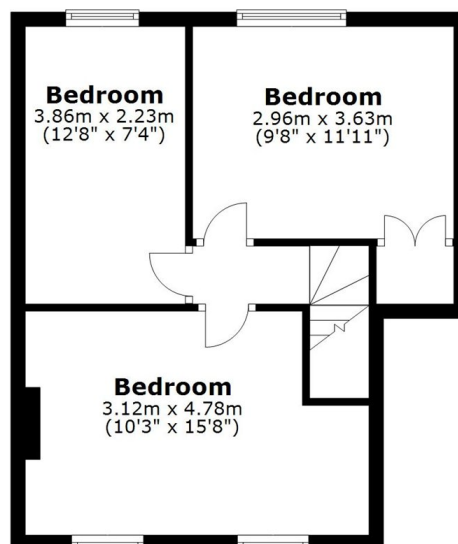
- Three Bedrooms
- Terraced House
- Driveway
- Large Garden
- Wooden Floors
- Cannon Hill Common

# Cannon Hill Lane, London, SW20

## Ground Floor



## First Floor



Main area: Approx. 89.6 sq. metres (964.5 sq. feet)  
Plus outbuildings, approx. 3.9 sq. metres (41.5 sq. feet)