



Clifden Road, TW8

£425,000

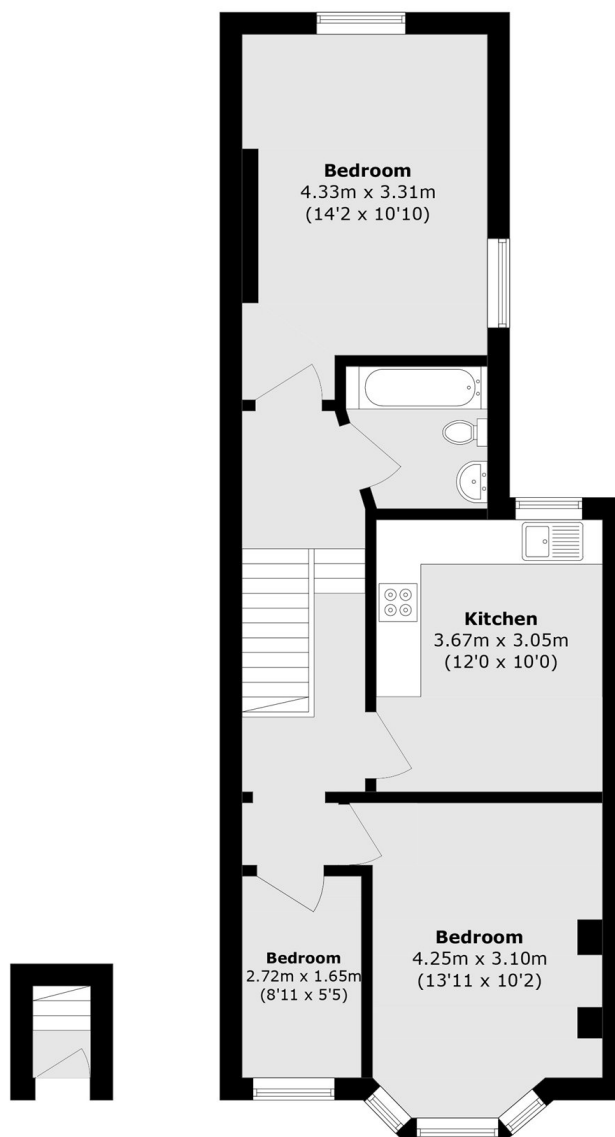
Offered with no onward chain and a long lease. Stands this charming period first floor flat on a sought after tree-lined road, offering generous and flexible accommodation with a modern interior throughout. Currently arranged as a three bedroom home with bathroom and spacious eat in kitchen/diner, the layout could easily be adapted to create a superb two bedroom apartment with a large reception room, depending on your preference.

Clifden Road is a five-minute walk from Brentford Station (GWR), Brentford High Street and Brentford High School for Girls (rated 'Good' by Ofsted, 2024). Northfields Underground Station (Piccadilly Line) is within a mile. The property is also a short walk away from the River Thames and associated pubs and restaurants, and the area boasts numerous recreational areas: Gunnersbury Park, Syon House, Boston Manor and Osterley House.

Features

Period Property
First Floor
No Onward Chain
Good condition
Kitchen / Diner
Two Bedrooms

Clifden Road, Brentford, TW8



Ground Floor

First Floor

Total area (approx.): 60.1 sq. m (646.9 sq. ft)