



£325,000

Beechmount Avenue, Hanwell, W7



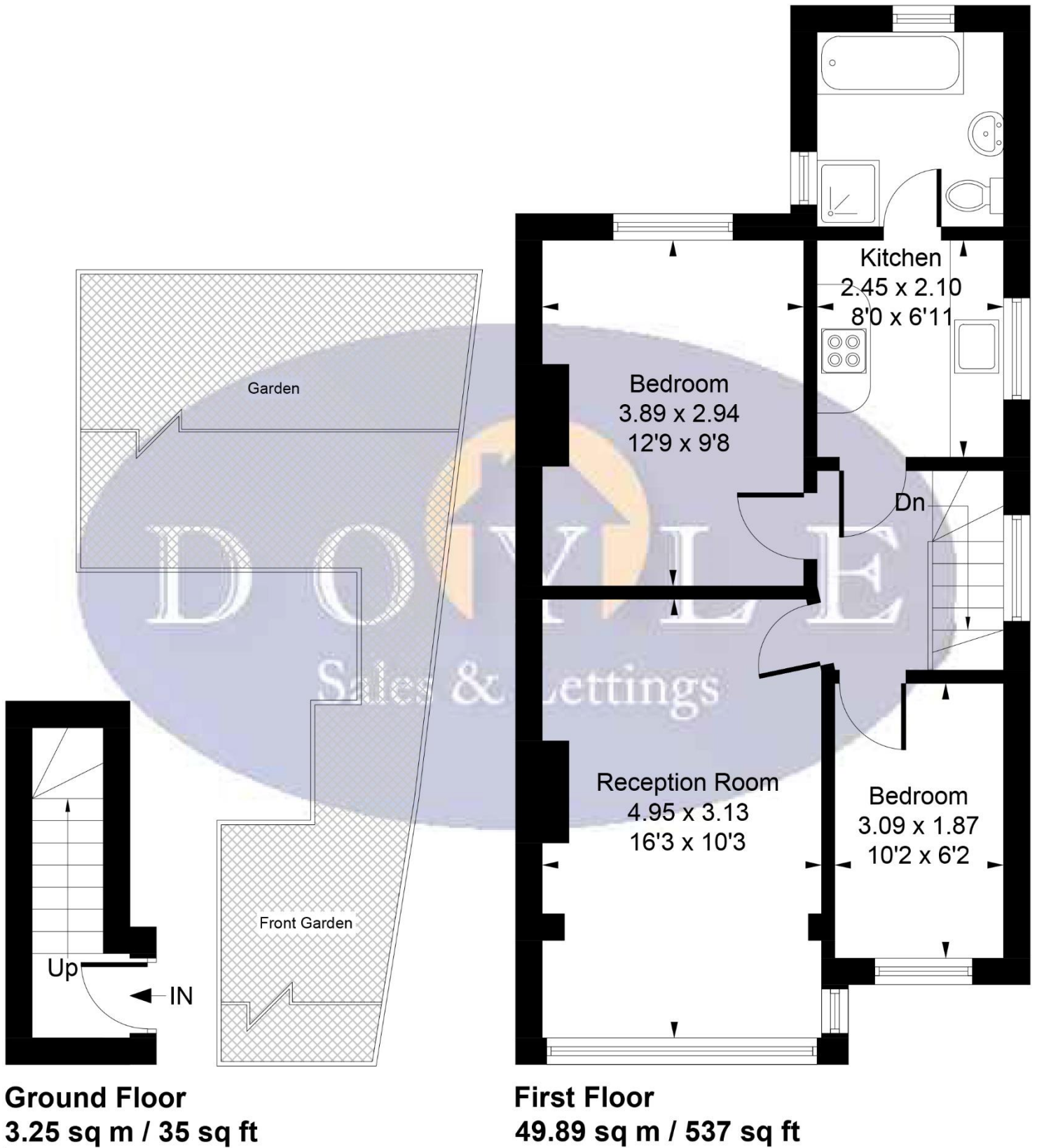
- 2 Bedrooms
- Spacious Reception
- Share Of Rear Garden
- Close To Elizabeth Line
- 572 Sq Ft
- Chain Free

This bright and spacious first-floor maisonette on Beechmount Avenue features 2 bedrooms, its own private entrance, and outdoor space including a front section of the front garden and a share of the rear garden. Sold with no onward chain, the property is perfectly positioned for convenience as local shops, restaurants, supermarkets along with the proximity to Brent Valley and Bunny Parks and nearby golf and cricket clubs. Surrounded by multiple bus links and easy access to Central London, Paddington, and Heathrow Airport via the Elizabeth Line. Located near well-regarded primary and secondary schools, it is an ideal home for families and commuters alike. Leashold 82 years Service Charge N/A Ground Rent N/A



Beechmount Avenue, W7 3AF

Approximate Gross Internal Area
53.14 sq m / 572 sq ft



Whilst every attempt has been made to ensure the accuracy of the floor plan contained here, measurements of doors, windows, rooms and any other items are approximate and no responsibility is taken for any error, omission, or mis-statement. This plan is for illustrative purposes only and should be used as such by any prospective purchaser.

© Vizion Property Marketing Produced for Doyle Sales & Lettings

Map



VIEWING BY APPOINTMENT WITH AGENTS DOYLE SALES & LETTINGS

11 Broadway Buildings, Boston Rd, Hanwell, London, W7 3TT T: 020 8840 0171 E: info@doylesalesandlettings.co.uk W: www.doylesalesandlettings.co.uk

General: While we endeavour to make our sales particulars fair, accurate and reliable, they are only a general guide to the property and, accordingly, if there is any point which is of particular importance to you, please contact the office and we will be pleased to check the position for you, especially if you are contemplating travelling some distance to view the property.

Measurements: These approximate room sizes are only intended as general guidance. You must verify the dimensions carefully before ordering carpets or any built-in furniture.

Services: Please note we have not tested the services or any of the equipment or appliances in this property, accordingly we strongly advise prospective buyers to commission their own survey or service reports before finalizing their offer to purchase.

THESE PARTICULARS ARE ISSUED IN GOOD FAITH BUT DO NOT CONSTITUTE REPRESENTATIONS OF FACT OR FORM PART OF ANY OFFER OR CONTRACT. THE MATTERS REFERRED TO IN THESE PARTICULARS SHOULD BE INDEPENDENTLY VERIFIED BY PROSPECTIVE BUYERS OR TENANTS. NEITHER DOYLE SALES & LETTINGS NOR ANY OF ITS EMPLOYEES OR AGENTS HAS ANY AUTHORITY TO MAKE OR GIVE ANY REPRESENTATION OR WARRANTY WHATEVER IN RELATION TO THIS PROPERTY.

YOUR HOME IS AT RISK IF YOU DO NOT KEEP UP REPAYMENTS ON A MORTGAGE OR OTHER LOAN SECURED ON IT.

Written quotations available on request. All loans secured on property. Life assurance is usually required.

EPC Graph

