



Coldharbour Lane, SW9

£450,000

Dexters



Coldharbour Lane, SW9

A well presented two double bedroom apartment, offering stylish and comfortable modern living. The property boasts a spacious open-plan kitchen / living / dining room, complete with a contemporary fitted kitchen and newly installed air conditioning. There are two double bedrooms, with the principal bedroom benefiting from its own private balcony, alongside access to a communal roof terrace. Further benefits include a sleek, modern bathroom, ample storage throughout, and a secure bike storage room. Offered chain-free, this is a superb opportunity for first-time buyers, investors, or anyone seeking a vibrant London lifestyle in a well-connected location.

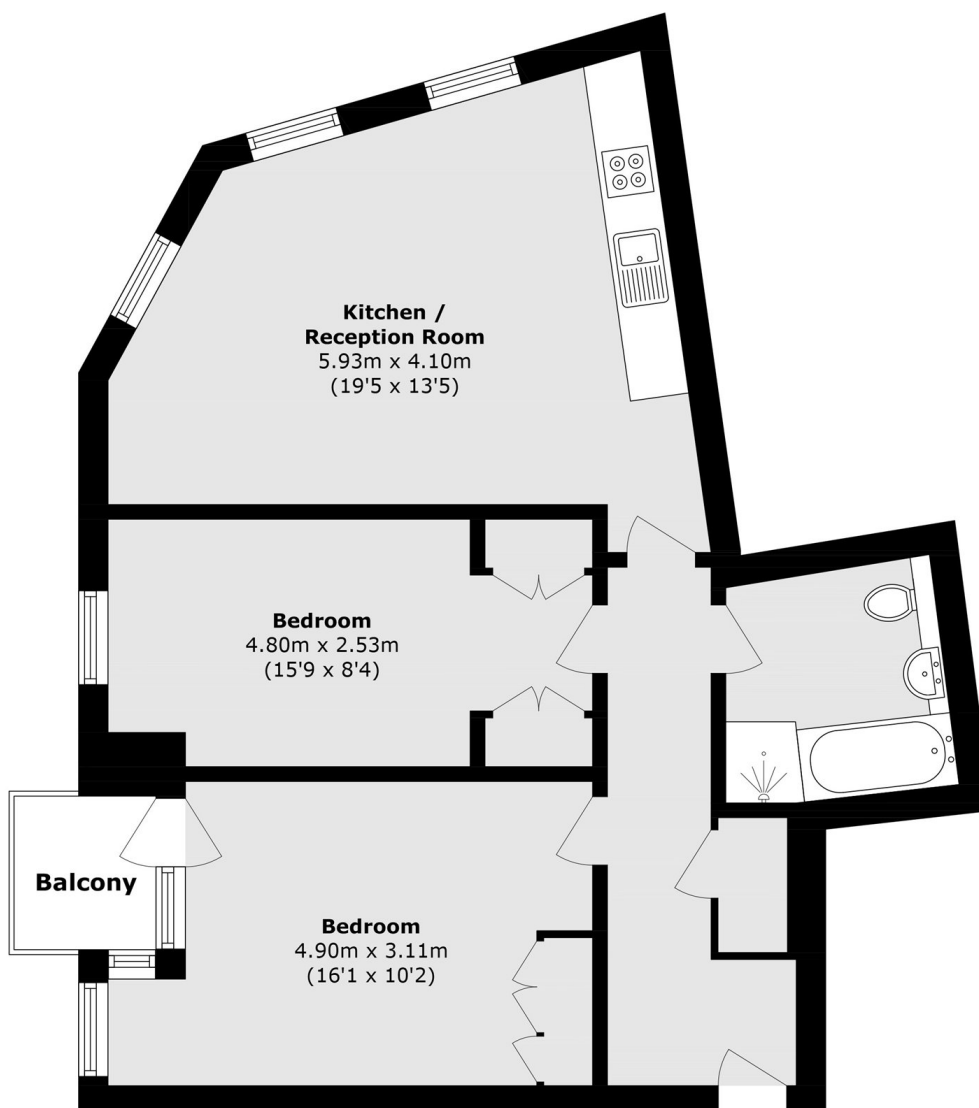
Coldharbour Lane is situated on the doorstep Camberwell and very close to central Brixton, providing excellent access to the area's many shops, bars and restaurants. Brixton Underground (Victoria Line) and Loughborough junction Station provide access to the city. Ruskin Park and Brockwell Park are just around the corner.

Features

- Chain Free
- Two Double Bedrooms
- Fitted Storage
- Balcony
- Communal Terrace



Coldharbour Lane, London, SW9



Total area (approx.): 64.3 sq. m (692.1 sq. ft)

Balcony area (approx.): 2.2 sq. m (23.6 sq. ft)