

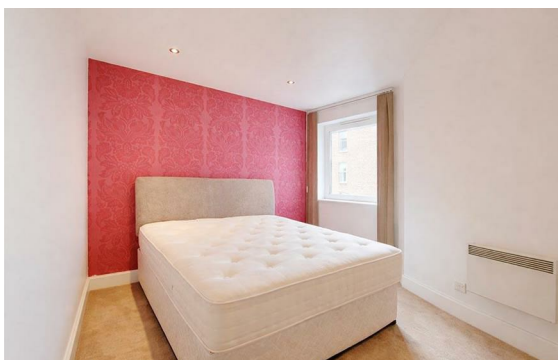
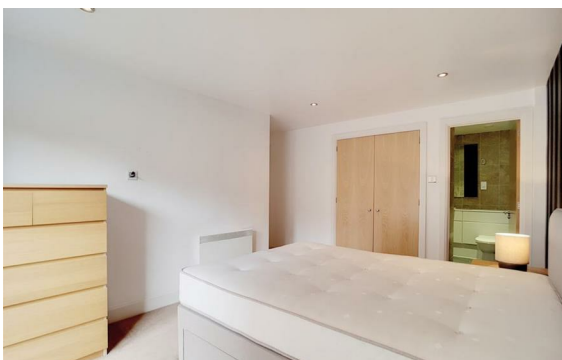


Weymouth Street, Fitzrovia, London, W1W

Rent £1,300 Per Month

2 Bed | 2 Bath | 1 Reception

*Please call us on 020 7724 2233 or email us [info@newingtonstates.com](mailto:info@newingtonstates.com) to book a viewing.*



A spacious and well-presented two-bedroom apartment features a generous reception room with a defined dining area, a modern fitted kitchen, and two well-proportioned bedrooms. The principal bedroom benefits from an en-suite bathroom, while a separate shower room serves the second bedroom and guests. The apartment is finished to a high standard throughout and offers a comfortable, well-balanced layout ideal for both professionals and sharers.

Further benefits include a private balcony, lift access, porter service, and 24-hour security. Ideally located in Fitzrovia, the property is close to a vibrant selection of cafés, restaurants, and boutique shops, with excellent transport links including Great Portland Street Station, Oxford Circus Station, and Regent's Park Station.

EPC rating: C

## Energy Efficiency Rating: C

Agents Note: Whilst every care has been taken to prepare these particulars, they are for guidance purposes only. All measurements are approximate and are for general guidance purposes only and whilst every care has been taken to ensure their accuracy, they should not be relied upon and potential buyers/tenants are advised to recheck the measurements.

**NEWINGTON**  
— ESTATES —

60 Upper Montagu Street

London

W1H 1SN

020 7724 2233

[info@newingtonstates.com](mailto:info@newingtonstates.com)

<http://www.newingtonstates.com>