

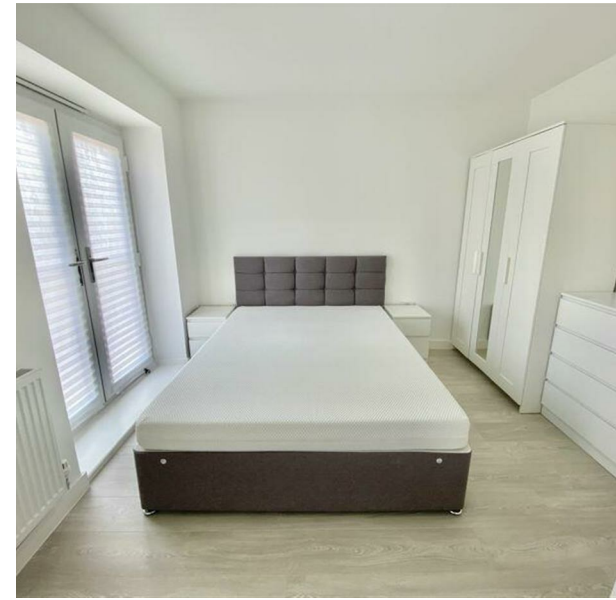
12 Stan Mellor Close, Salford, M6 6QB

£1,650 Per Month

Council Tax Band: B



ORLANDO REID



Take a look at this stunning new-build family home. Featuring superb open-plan living space, three double bedrooms, a private rear garden, and allocated parking, this property is set within a highly sought-after residential location on the outskirts of Manchester City Centre.

Situated within the popular Castle Irwell development in the desirable area of Salford, this impressive home offers well-proportioned, light-filled living space designed to suit modern lifestyles. Finished to a high standard throughout, the property must be viewed to be fully appreciated.



St Johns Court 19b Quay Street, Manchester, M3 3HN

01616760099

manchester@orlandoreid.co.uk

<https://www.orlandoreid.co.uk/manchester/>

