



Culford Road, N1

£2,200 Per calendar month

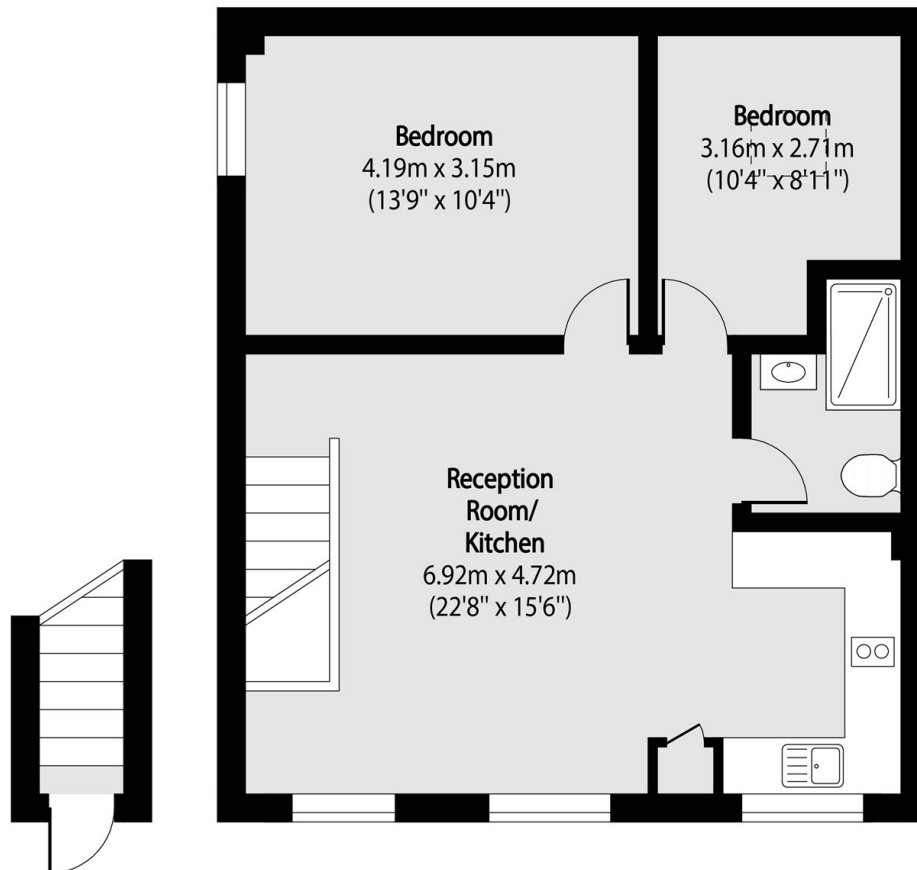
A beautiful one bedroom ground floor maisonette within this popular location Culford Road a short distance from Angel. The property includes double bedroom, a modern shower room, and a spacious open-plan kitchen and reception room. Additional benefits include contemporary interiors, and excellent natural light throughout.

Culford Road is located within easy reach of all the numerous facilities of Islington. There are many bus routes to the City and further transport links are available at Haggerston Overground, Highbury and Islington (Victoria and London Overground lines) and Angel (Northern line).

Features

Ground Floor
One Bedroom
One Bathroom
Modern
Furnished
Open Plan Kitchen

Culford Road,
London, N1



Ground Floor

First Floor

Total area (approx): 58.64 sq m (631 sq. ft)