



49 Springfield Avenue
Kettering, NN14 4TN



Simpson & Partners

Occupying a pleasant position within the highly sought-after market town of Thrapston, this beautifully presented three-bedroom semi-detached residence is offered to the market with the added benefit of no onward chain. Perfectly suited to families, first-time buyers, or those looking to upsize, the property enjoys a convenient location within easy walking distance of local schools, shops, and a range of everyday amenities.

Upon entering the home, you are welcomed by a bright and inviting entrance hall leading through to a spacious living room, ideal for relaxing and entertaining. The separate dining room offers an excellent space for family meals and social occasions, with doors opening directly onto the rear garden, creating a wonderful indoor-outdoor flow. The fitted kitchen is both practical and well-appointed, offering ample storage and workspace.

To the first floor, the property boasts two generous double bedrooms, a well-proportioned single bedroom, and a modern family bathroom, all presented to a good standard throughout.

Externally, the home continues to impress with an enclosed and established rear garden featuring a variety of seating and entertaining areas, perfect for enjoying the warmer months. To the front, a substantial driveway provides ample off-road parking for multiple vehicles.

Early viewing is highly recommended to fully appreciate the space, presentation, and excellent location this wonderful home has to offer.

£247,500



3



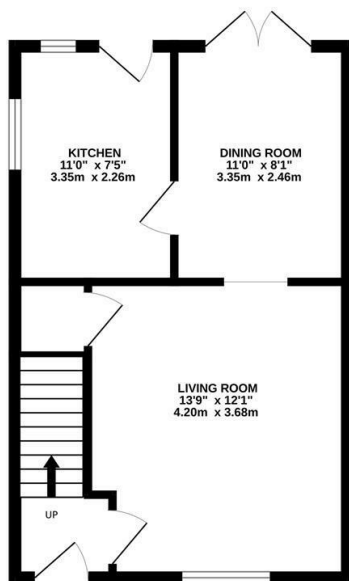
1



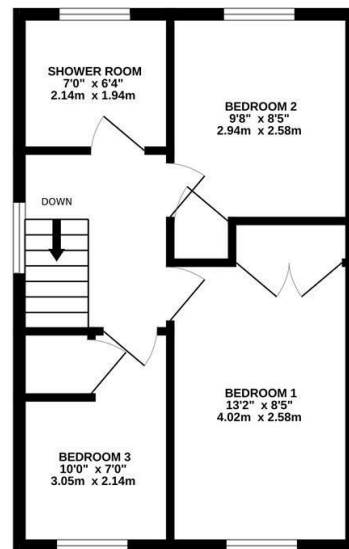
1



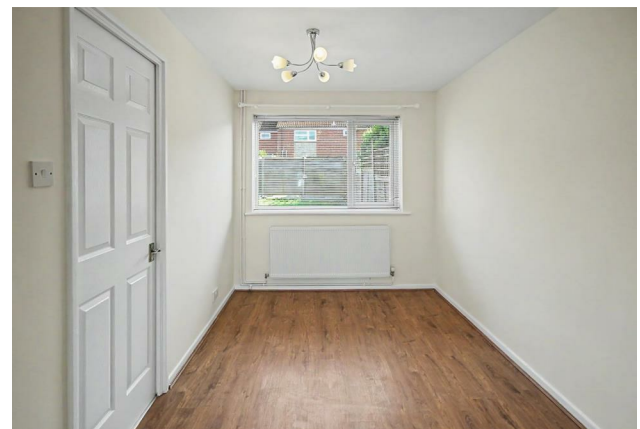
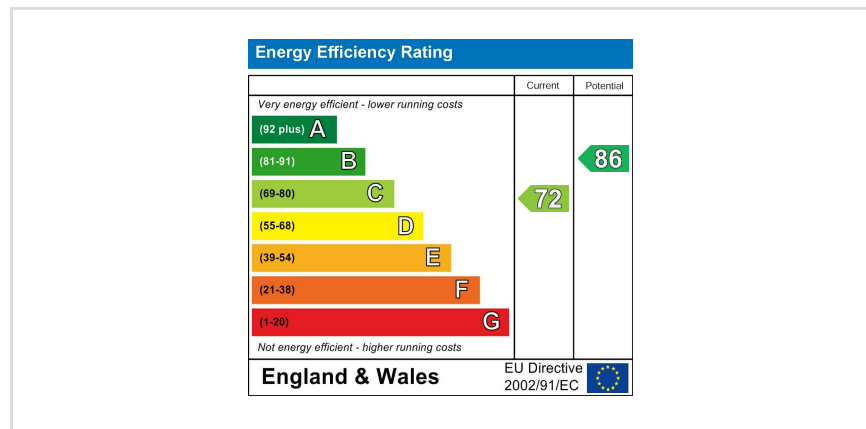
GROUND FLOOR
384 sq.ft. (35.6 sq.m.) approx.



1ST FLOOR
384 sq.ft. (35.6 sq.m.) approx.



TOTAL FLOOR AREA: 767 sq.ft. (71.3 sq.m.) approx.
Whilst every attempt has been made to ensure the accuracy of the floor plan contained here, measurements of doors, windows, rooms and any other items are approximate and no responsibility is taken for any error, omission, or mis-statement. The plan is copyright to Simpson and Partners and is for illustrative purposes and should only be used as such by any prospective purchaser. The services, systems and appliances shown have not been tested and no guarantee as to their operability can be given.
Made with Metreapp C2026



When you buy with Simpson and Partners, you know **you'll be in safe hands**. From the moment you walk through our doors, we'll make you **feel truly welcome**. Our sales consultants and financial advisors will take you through **every step of the process**, offering **free expert advice** along the way, from help choosing the right mortgage and insurance through to finding your conveyancer. And if you need help selling your home too, **with over 20 years of local experience, you can trust us to get you moving**.



**Simpson
& Partners**

Making Every
Journey Personal



01832 731222

thrapston@simpsonandpartners.co.uk

<https://www.simpsonandpartners.co.uk/>

43-45 High Street, Thrapston, Northants, NN14 4JJ