



turners



6 Atlantic Sands Arlington Place

, Woolacombe, EX34 7BD

Price Guide £325,000



6 Atlantic Sands Arlington Place

, Woolacombe, EX34 7BD

Price Guide £325,000



Property Description

A beautifully presented and modern designed first-floor apartment, perfectly positioned within a short walk of the heart of Woolacombe village centre and its award-winning beach, offering an ideal blend of stylish coastal living and everyday practicality. Offered for sale on a chain-free basis, the property features two well-proportioned double bedrooms and a bright, contemporary open-plan lounge, kitchen and dining area, creating a sociable living space that enjoys exceptional views across the surrounding countryside and towards the top of the dunes. A sleek three-piece shower room complements the modern interior, making the home ready for immediate enjoyment as a permanent residence, holiday retreat or investment opportunity.

Outside, residents benefit from a communal rear garden designed for beachside living, including an allocated storage shed perfect for surfboards and outdoor equipment, an outdoor hot shower, and a designated BBQ area ideal for relaxing and entertaining. The property also includes one allocated parking space, with a second additional space available subject to an annual cost (see agent notes).

Location

Woolacombe known for its appeal to surfers, hikers, and general holidaymakers remains bustling with activity. The village's beautiful sunsets and welcoming atmosphere make it a haven for those seeking a memorable getaway. The convenience of proximity to surrounding towns such as Ilfracombe, Croyde, and Braunton adds to the allure providing a well-rounded

experience for everyone.

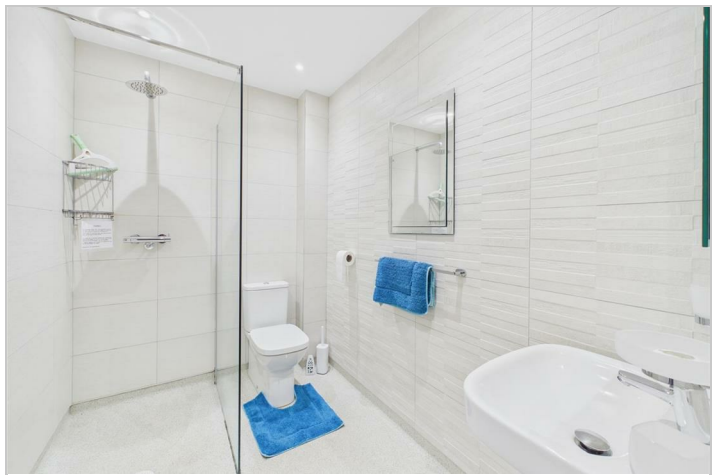
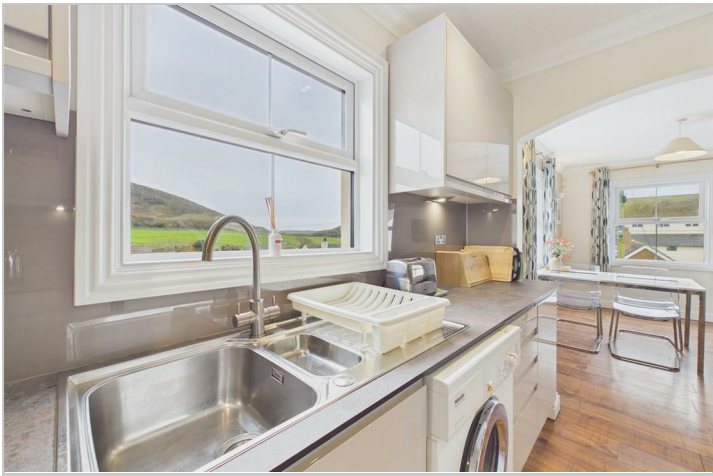
North Devon has a wealth of simply stunning golden sand beaches and has long been a mecca for British surfers. The area has recently been declared a 'world surfing reserve', one of just 12 places on the planet along with Australia's Golden Coast and Malibu in California. For a change of scenery, Exmoor National Park offers breath-taking rolling countryside, perfect for avid walkers.

Agent Notes

- Freshly renovated around 4-5 years ago
- Additional parking space costs £200.00 for the year
- This property has a 999 year lease with 983 years remains
- The service charge £1575.00 (£131.25pcm) a year

Directions

From office head south-west on the High Street/A361 towards Meridian Place and follow signs towards Woolacombe. Once you get to Mullacott roundabout, take the 3rd exit towards Woolacombe. follow this road for until you get into Woolacombe and turn left onto West Road just after Byron Hotel. Follow this road to the end and then turn left onto South Street, In 0.1miles, turn right onto Arlington place where the property will be clearly signed on the left hand side just down the road.



Road Map



Hybrid Map



Terrain Map



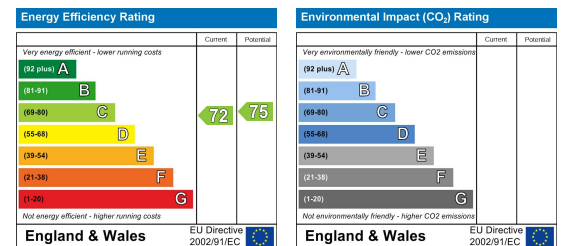
Floor Plan



Viewing

Please contact our Turners Property Centre - Braunton Office on 01271 815651 if you wish to arrange a viewing appointment for this property or require further information.

Energy Efficiency Graph



These particulars, whilst believed to be accurate are set out as a general outline only for guidance and do not constitute any part of an offer or contract. Intending purchasers should not rely on them as statements of representation of fact, but must satisfy themselves by inspection or otherwise as to their accuracy. No person in this firm's employment has the authority to make or give any representation or warranty in respect of the property.