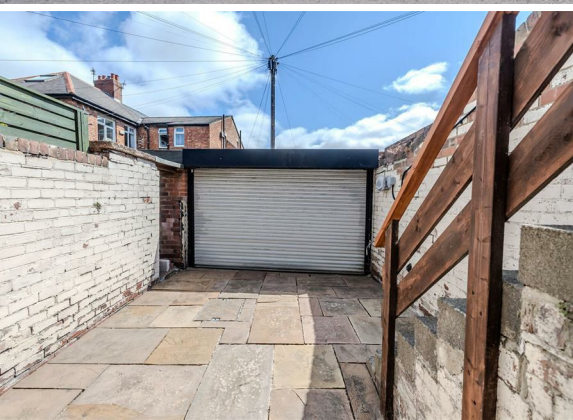


112 Addycombe
Terrace
Heaton
Newcastle Upon Tyne
NE6 5SQ

Offers Over
£200,000

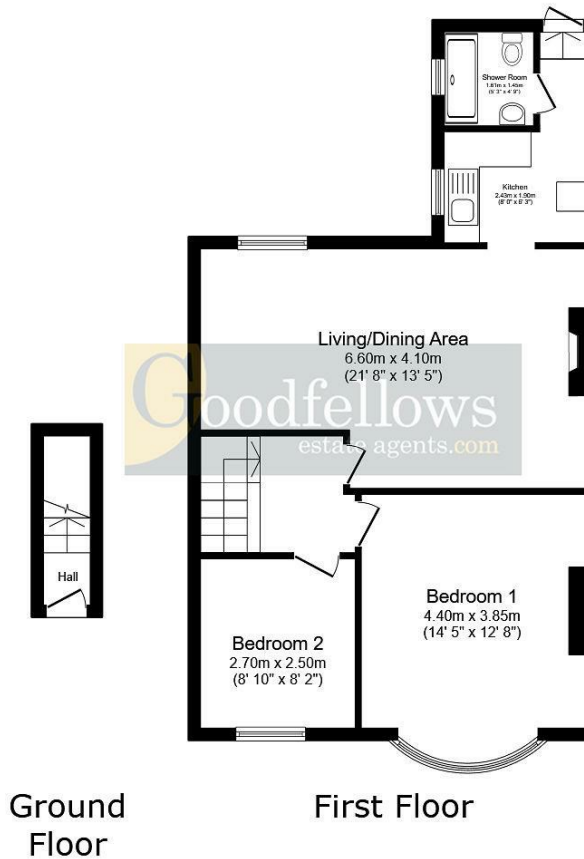


112 Addycombe Terrace
Heaton
Newcastle Upon Tyne
NE6 5SQ

- Two bedroom first floor Tyneside flat
- No upper chain involved
- Electric roller door to the rear yard for parking
- New carpets throughout
- Ideal for a first time buyer
- Great open plan lounge diner to the rear
- Originally a three bedroom
- Modern kitchen and shower room
- Recently decorated







Total floor area: 66.6 sq.m. (716 sq.ft.)

This floor plan is for illustrative purposes only. It is not drawn to scale. Any measurements, floor areas (including any total floor area), openings and orientations are approximate. No details are guaranteed, they cannot be relied upon for any purpose and do not form any part of any agreement. No liability is taken for any error, omission or misstatement. A party must rely upon its own inspection(s).



EPC Rating: D
Council Tax Band: A

Whilst every care has been taken to prepare these particulars, they are for guidance purposes only. All measurements are approximate and whilst every care has been taken to ensure their accuracy, they should not be relied upon and potential buyers/tenants are advised to recheck the measurements. The agent has not tested any equipment, services, fixtures or fittings and makes no representation regarding their condition.

CONTACT
 246 Chilingham Road, Heaton,
 Newcastle upon Tyne, NE6 5LQ
 E: heaton@goodfellowsestateagents.com
 T: 0191 2654400

