



Price
£400,000

Freehold

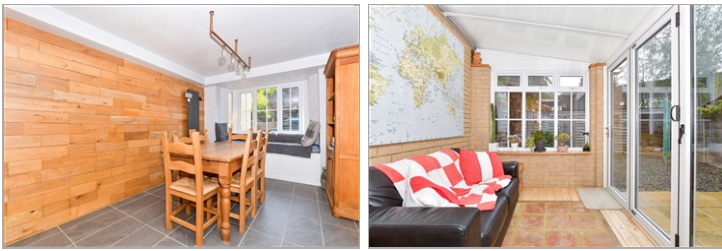
3x  2x  1x 

**Victoria Orchard,
Queens Road,
Maidstone, Kent ME16**

OVER 60?

Secure this property
for up to **59% less!**

Wards
Helping you move forwards



Main features

- Refurbished and remodelled house
- Set in a quiet cul-de-sac position
- Open plan kitchen/diner with conservatory to rear
- En-suite facilities to bedroom 1
- Off street parking to front ND low maintenance rear garden

Accommodation

GROUND FLOOR

Hallway
 Toilet
 Kitchen/Diner: 13'5 x 9'5 (4.09m x 2.87m) plus 17'0 x 9'5 (5.19m x 2.87m)
 Utility Room
 Conservatory: 10'0 x 8'10 (3.05m x 2.69m)

FIRST FLOOR

Landing
 Lounge: 16'4 x 11'7 (4.98m x 3.53m)
 Bedroom 1: 13'2 x 9'5 (4.02m x 2.87m)
 En-Suite Shower Room

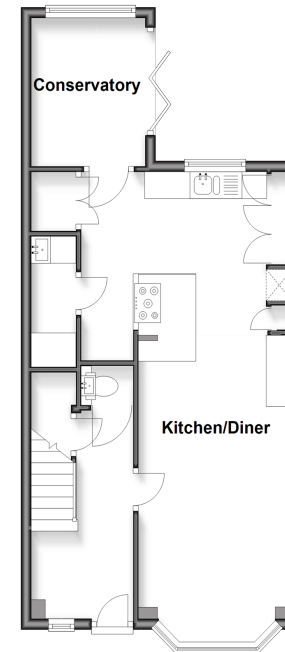
SECOND FLOOR

Landing
 Bedroom 2: 14'3 x 9'5 (4.35m x 2.87m)
 Bedroom 3: 12'9 x 9'4 (3.89m x 2.85m)
 Bathroom

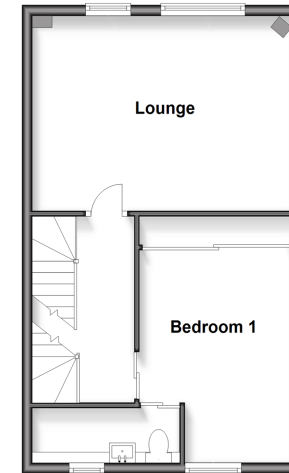
OUTSIDE

Rear Garden
 Front Garden
 Off Road Parking

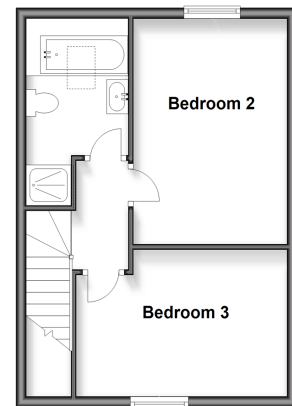
Ground Floor
 Approx. 519.7 sq. feet



First Floor
 Approx. 446.4 sq. feet



Second Floor
 Approx. 388.9 sq. feet



Call Maidstone - 01622 683737 ■ wardsof Kent.co.uk

- Legal advice should be taken to verify fixtures/fittings, planning, alterations and/or lease details
- Appliances & services are untested, dimensions are approximate and floor plans are not to scale
- Through a Homewise Home For Life Plan people aged 60+ can secure this property for up to 50% less, by purchasing a Lifetime Lease.



13159122/20251006/CV/DS