



Granby Road, SE9

£325,000

Set within the ever-popular Progress Conservation Area, this two-bedroom ground floor maisonette benefits from direct access to a private garden and features its own driveway to the front. The property offers a long-term lease of approximately 950 years, no service charge, and a peppercorn ground rent, making it a highly cost-effective option for any first-time buyer. Maintained to a good standard, the home provides ample storage throughout and retains many of its period features.

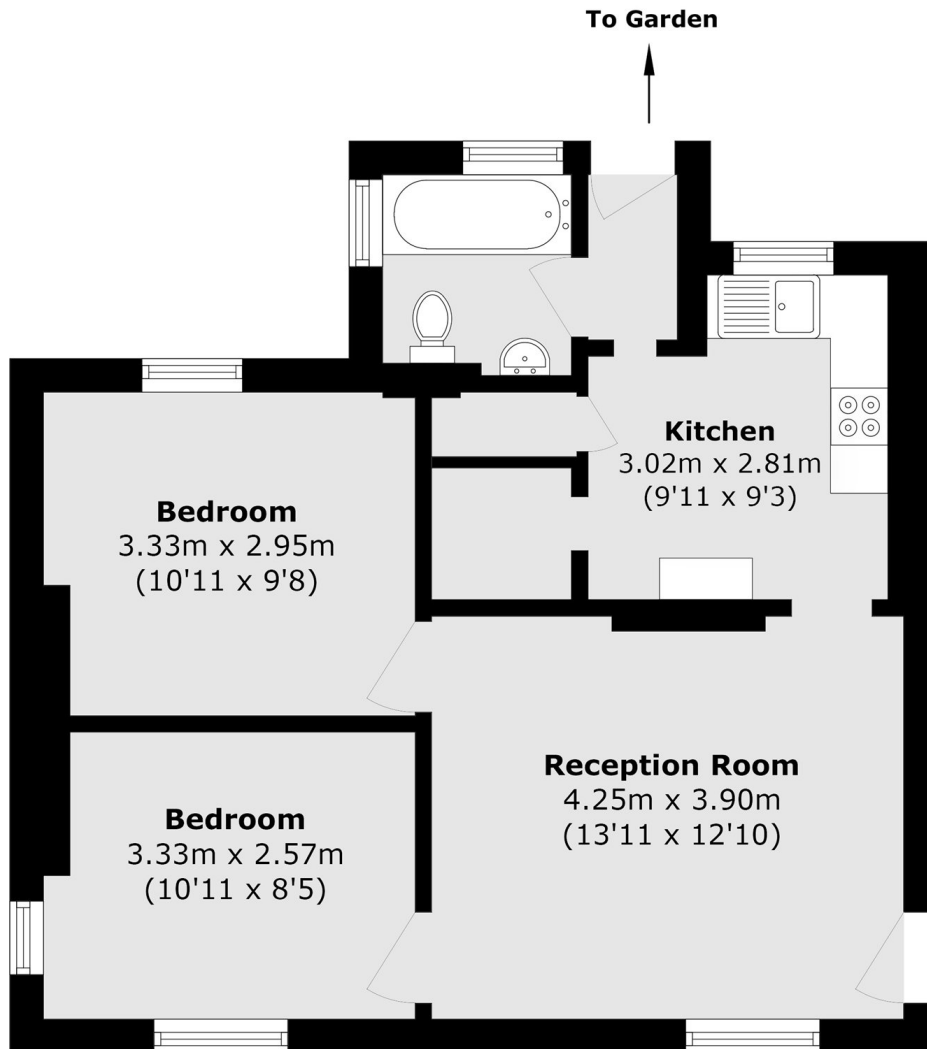
This well-presented property is ideal for first-time buyers and investors alike. It is situated in a sought-after residential location with easy access to local amenities, including a mainline station. The property is nestled in the heart of the highly desirable Progress Estate Conservation Area, within close proximity to a variety of well-regarded primary and secondary schools.

Eltham Train Station is just a short walk away and offers frequent direct services into London Bridge, Waterloo East, Cannon Street, Charing Cross, and London Victoria. Eltham High Street is also a short distance away, offering a range of shops, bars, restaurants, and the recently built Vue cinema. Green spaces such as Eltham Park are just a short stroll away, featuring popular cafés and delis.

Features

- Chain Free
- Conservation Area
- Two Bedrooms
- Large Private Garden
- Driveway To Front
- Period Features

Granby Road,
London, SE9



Total area (approx.): 50.6 sq. m (544.6 sq. ft)