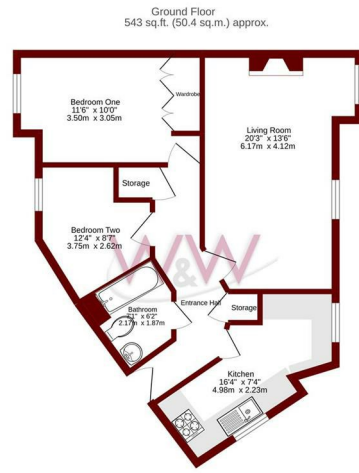




Timber House, Silver Birch Way | | Whiteley | PO15 7GQ

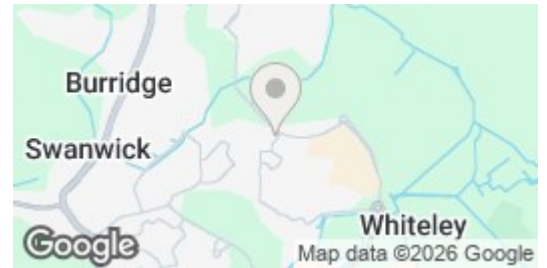
£1,100 PCM





TOTAL FLOOR AREA: 543 sq.ft. (50.4 sq.m.) approx.  
While every attempt has been made to ensure the accuracy of the floor plan, measurements of actual rooms, fixtures and fittings should be taken as approximate. The plan is for information only and does not constitute a contract. The plan is for information only and does not constitute a contract. The plan is for information only and does not constitute a contract.

Energy Efficiency Rating		
	Current	Potential
Very energy efficient - lower running costs		
(92 plus) A		
(81-91) B		
(69-80) C		
(55-68) D		
(39-54) E		
(21-38) F		
(1-20) G		
Not energy efficient - higher running costs		
England & Wales	EU Directive 2002/91/EC	



## Description

W&W are delighted to offer for let this two double bedroom top floor apartment. The property boasts two bedrooms, 20' lounge/dining room, spacious kitchen & family bathroom. The property also benefits from allocated parking to the rear. Property undergoing re-decoration before next tenancy. Please call the office to schedule a viewing as properties like this are in high demand.

## Key features

- Two Bedroom Top Floor Apartment
- Good Sized Lounge Diner
- Alocated parking Space
- Kitchen
- Bathroom
- Available Late february 2024



H3 Whiteley Shopping Centre  
Whiteley Way  
Whiteley  
Hants  
PO15 7PD  
01489 580800  
pm@walkerwaterer.co.uk  
www.walkerwaterer.co.uk