

# MATTHEW JAMES

Residential Sales • Lettings • Management



Doric Way, Euston, NW1 1LB

**Asking Price £425,000**

A two double bedroom purpose built flat on the third floor of a securely gated block with lift access. Offering a good sized living room, two double bedrooms, kitchen, bathroom and double glazed windows throughout. Located centrally and close to London Euston and St Pancras International Stations, whilst to the west and within walking distance are the wide open green spaces of Regents Park, Camden Town with its famous bustling market is a short walk north and well located for access to both Central and the West End of London with it's array of attractions. Available for sale chain free. New 250 Year Lease.

Mixed Tenure Block.

Third Floor  
Lift and stair access.

Hallway

Living Room



Bedroom One



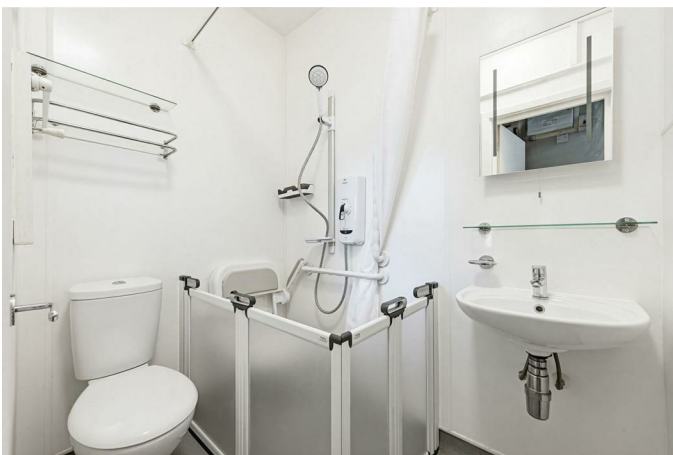
Bedroom Two



Kitchen



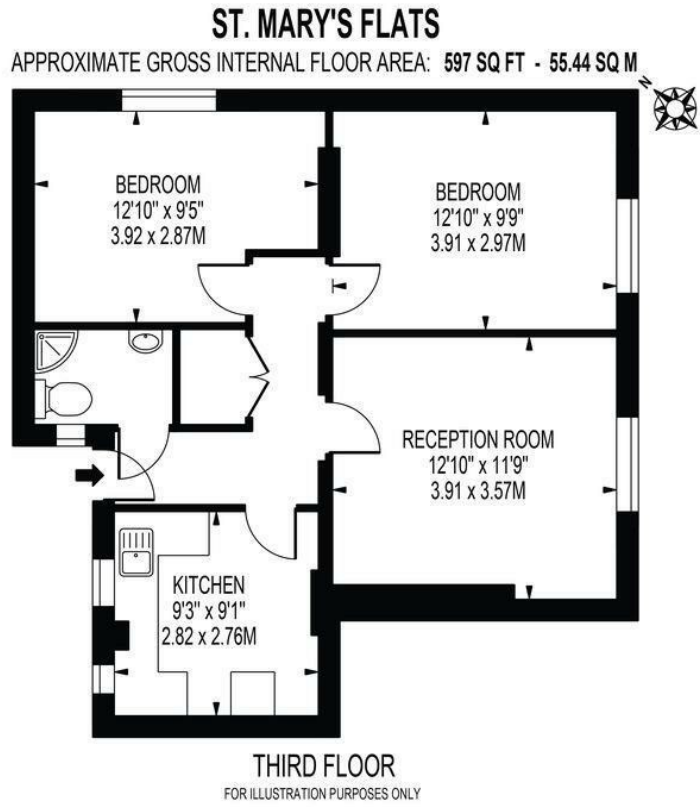
Bathroom/W.C.



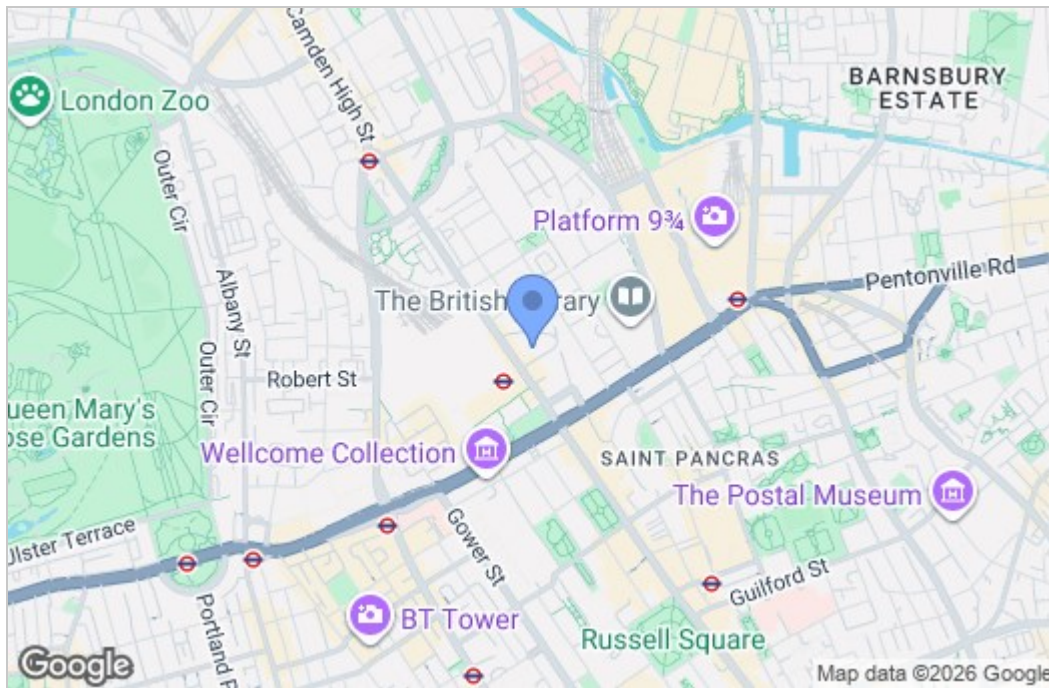
Additional Information

New 250 Year Lease  
Service Charge - £1038 Per Annum  
Ground Rent - Zero  
Camden Council Tax Band D

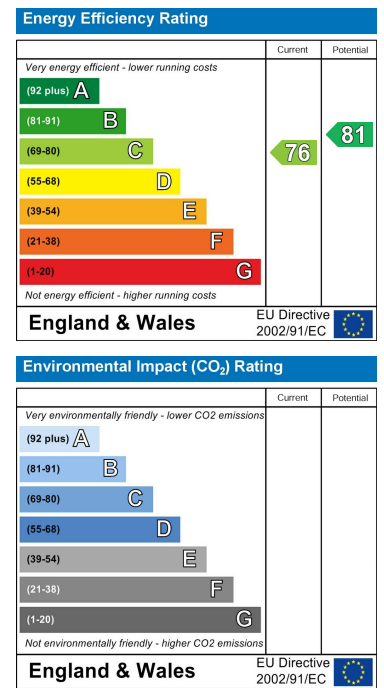
# Floor Plan



# Area Map



# Energy Efficiency Graph



These particulars, whilst believed to be accurate are set out as a general outline only for guidance and do not constitute any part of an offer or contract. Intending purchasers should not rely on them as statements of representation of fact, but must satisfy themselves by inspection or otherwise as to their accuracy. No person in this firm's employment has the authority to make or give any representation or warranty in respect of the property.