



Guide Price

£200,000

Leasehold

2x  2x  1x 

**Cornhill Place,
Maidstone, Kent ME15**

OVER 60?

Secure this property
for up to **59% less!**

Wards
Helping you move forwards



Main features

- Ground floor apartment
- Immaculately presented with modern decor throughout
- 1 allocated parking space, en-suite facilities to bedroom 1
- Set in a quiet cul-de-sac nearby to local schools and shops
- Perfect for first time buyers and investors alike

Accommodation

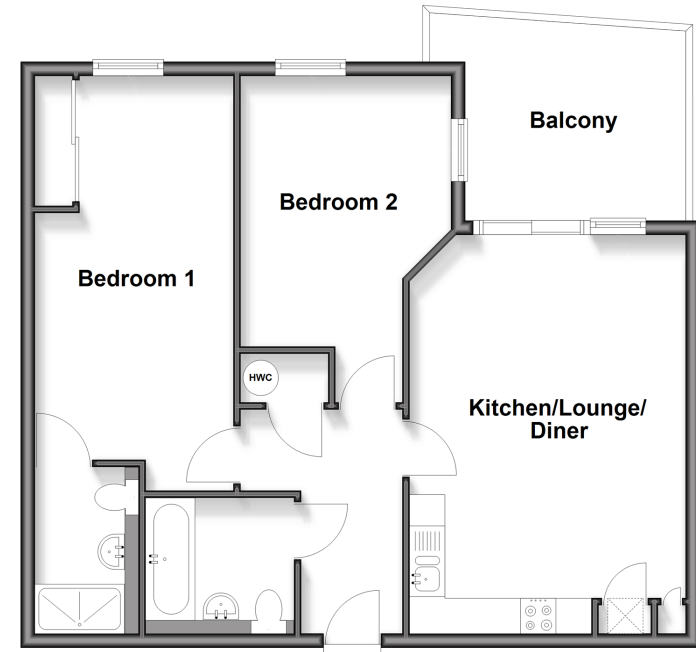
GROUND FLOOR

- Hallway
- Kitchen/Lounge/Diner: 19'5 x 12'8 (5.92m x 3.86m)
- Balcony
- Bedroom 1: 19'5 x 8'9 (5.92m x 2.67m)
- En-Suite Shower Room
- Bedroom 2: 15'2 x 9'5 (4.63m x 2.87m)
- Bathroom

OUTSIDE

- Allocated Parking
- Communal Grounds

Ground Floor
Approx. 65.2 sq. metres (701.8 sq. feet)



Call Maidstone - 01622 683737 ■ wardsof Kent.co.uk

■ Legal advice should be taken to verify fixtures/fittings, planning, alterations and/or lease details
 ■ Through a Homewise Home For Life Plan people aged 60+ can secure this property for up to 50% less, by purchasing a Lifetime Lease.

■ Appliances & services are untested, dimensions are approximate and floor plans are not to scale



13159104/20251110/TB/TB