



Guide Price
£240,000

Freehold

2x  1x  1x 

**The Spillway, Maidstone,
Kent ME15**

OVER 60?

Secure this property
for up to **59% less!**

Wards
Helping you move forwards



Main features

- Chain free
- Off road parking to the side
- Cul-de-sac location, walking distance to shops and amenities
- Sunny rear garden
- Perfect for first time buyers and investors alike

Accommodation

GROUND FLOOR

Porch
 Lounge: 14'6 x 11'1 (4.42m x 3.38m)
 Kitchen: 11'1 x 7'9 (3.38m x 2.36m)

FIRST FLOOR

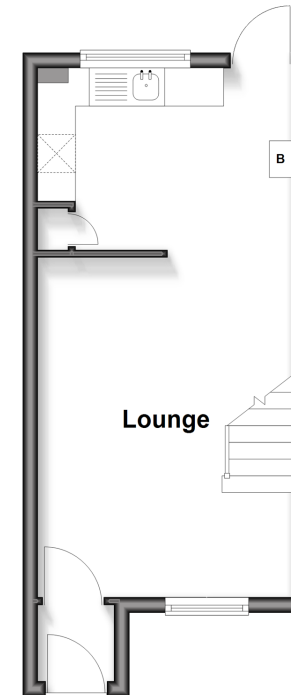
Landing
 Bedroom 1: 11'4 x 9'1 (3.46m x 2.77m)
 Bedroom 2: 8'0 x 6'1 (2.44m x 1.86m)
 Bathroom

OUTSIDE

Rear Garden
 Allocated Parking

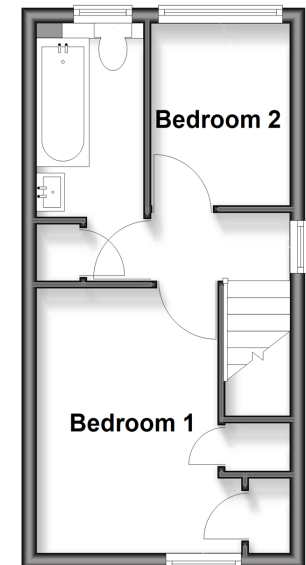
Ground Floor

Approx. 24.5 sq. metres (263.3 sq. feet)



First Floor

Approx. 23.5 sq. metres (252.6 sq. feet)



Call Maidstone - 01622 683737 ■ wardsof Kent.co.uk

■ Through a Homewise Home For Life Plan people aged 60+ can secure this property for up to 59% less, by purchasing a Lifetime Lease



13159519/20260428/CV/TB