



St. Gerards Close, SW4

£2,800 Per calendar month

This three bedroom townhouse in a private close, comes with a generous amount of living space, two large double bedrooms and a further study room.

St Gerards Close is ideally located for the many boutique shops and restaurants of Abbeville Village. Clapham Common and Clapham South stations are just a stroll away, with Clapham Common itself on your doorstep.

Features

- Two Double Bedrooms
- Townhouse
- Two Floors
- Study Room
- Spacious Reception Room
- Off-Street Parking
- Private Garden



St. Gerards Close, SW4

Set over two floors, this wonderful home is ideal for a small family. The ground floor has a spacious reception room with a bay window and laminate flooring. There is a separate kitchen with storage space to the rear of the property and access to a private rear garden.

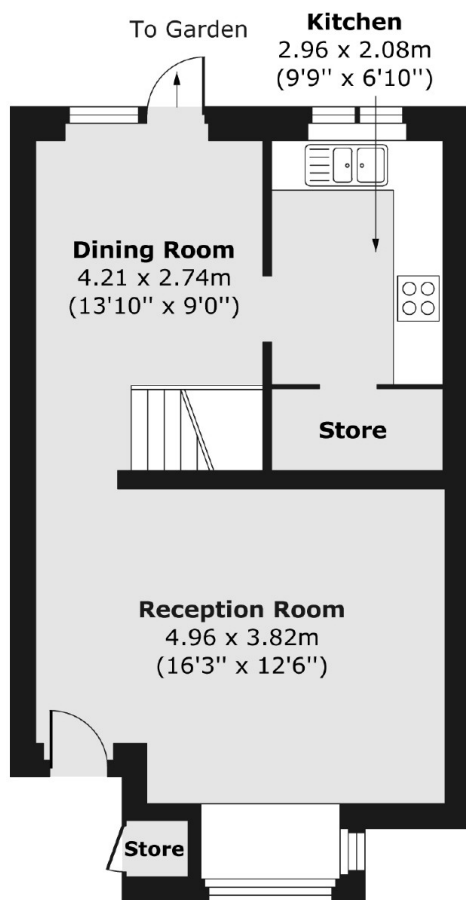
The first floor offers two double bedrooms with built-in storage, a study room and a family bathroom.

The property also comes with off-street parking.

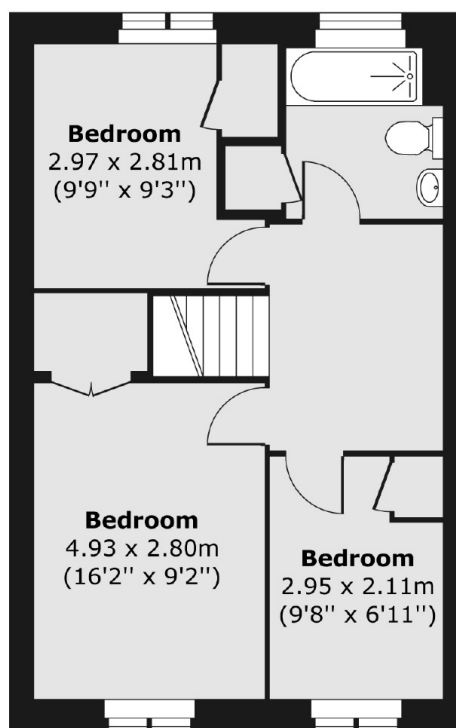


St. Gerards Close, London, SW4

Ground Floor



First Floor



Total area (approx.) 78.68 sq. m (847 sq. ft)
Store area (approx.) 0.52 sq. m (6 sq. ft)