



## KEW BRIDGE ROAD, TW8

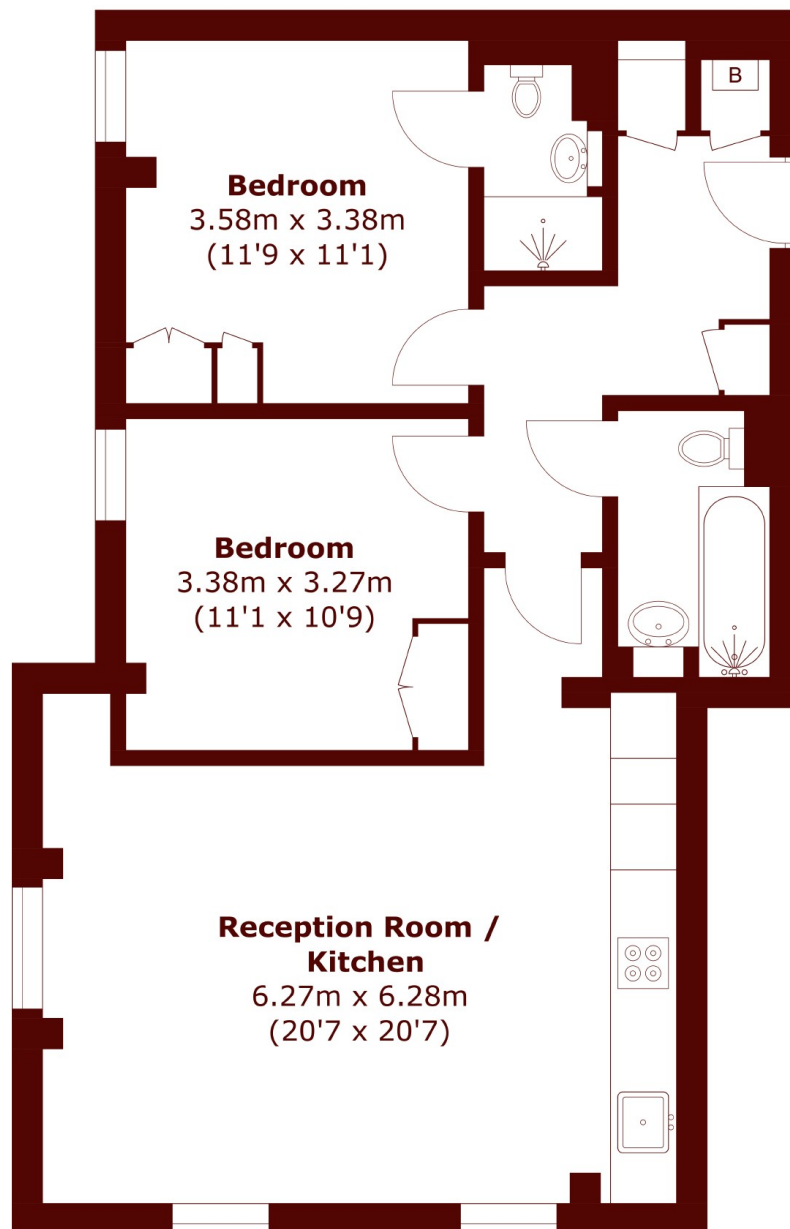
£500,000

An open planned living room and kitchen has views over the River Thames along with the principle bedroom having access to the en suite. There is a further double bedroom and family bathroom.

Two bedrooms  
Two bathrooms  
River views

Fantastic condition  
Close to transport  
Energy rating: b

# STEP INSIDE KEW BRIDGE ROAD



Total area (approx.): 72.3 sq. m (778.2 sq. ft)

Chiswick  
020 8994 2556

Energy Rating: B We aim to make our particulars both accurate and reliable. However, they are not guaranteed; nor do they form part of an offer or contract. If you require clarification on any points then please contact us, especially if you're traveling some distance to view. Please note that appliances and heating systems have not been tested and therefore no warranties can be given as to their good working order

MARSH &  
PARSONS