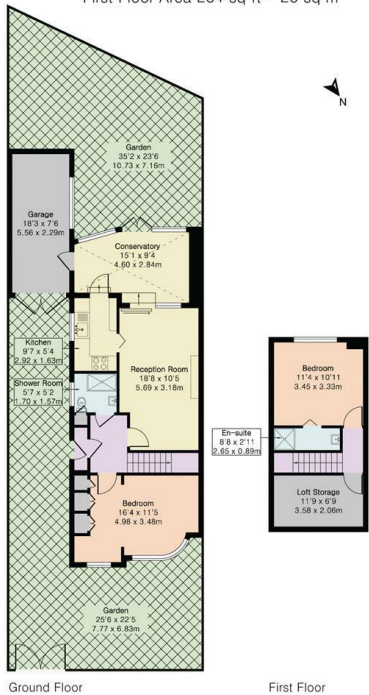




Approximate Gross Internal Area 1112 sq ft - 103 sq m  
Including Garage  
Ground Floor Area 828 sq ft - 77 sq m  
First Floor Area 284 sq ft - 26 sq m



Council: Waltham Forest | Council Tax Band: E | Floor Area: 1112.00 sq ft

Energy Efficiency Rating		
	Current	Potential
Very energy efficient - lower running costs		
(92 plus) A		
(81-91) B		
(69-80) C		
(55-68) D		
(39-54) E		
(21-38) F		
(1-20) G		
Not energy efficient - higher running costs		
England & Wales	EU Directive 2002/91/EC	



The Agent has not tested any apparatus ,equipment, fixtures and fittings or services and so cannot verify that they are in working order or fit for the purpose. A buyer is advised to obtain verification from their solicitor or surveyor.  
References to the tenure of a property are based on information supplied by the seller. The agent has not had the sight of the title documents. A buyer is advised to obtain verification from their solicitors.

CHURCHILL  
estates

Harford Road, North Chingford, E4 7NQ  
£525,000 Freehold

Bedrooms: 2 | Reception Rooms: 1 | Bathrooms: 2



CHURCHILL  
estates

Request a Viewing: 020 8529 5500 Email: northchingford@wearechurchills.co.uk





LOOK!! LOOK!! LOOK!! Do not miss out on this beautiful two bedroom two bathroom semi detached chalet bungalow which is situated in this quiet turning in the sought after Yardley school catchment area and only a short hoppla bus ride to the main line station. The property which is being offered with no onward chain boasts many fine features including large garage via own driveway with ample off street parking, large through lounge, lovely fitted kitchen, conservatory, approx 40ft rear garden, ground floor shower room, additional en suite shower room and an early internal inspection is a must.

EPC Rating D

Council Tax Band E

