



Guide Price
£180,000

Leasehold

2x  1x  1x 

**Park View Court, School
Lane, Maidstone, Kent
ME15**

OVER 60?

Secure this property
for up to **59% less!**

Wards
Helping you move forwards



Main features

- Chain free first floor purpose built flat
- Immaculately presented with neutral decor throughout
- Off road parking and a car port
- Spacious throughout, close to local schools and amenities
- Perfect for first time buyers and investors alike

Accommodation

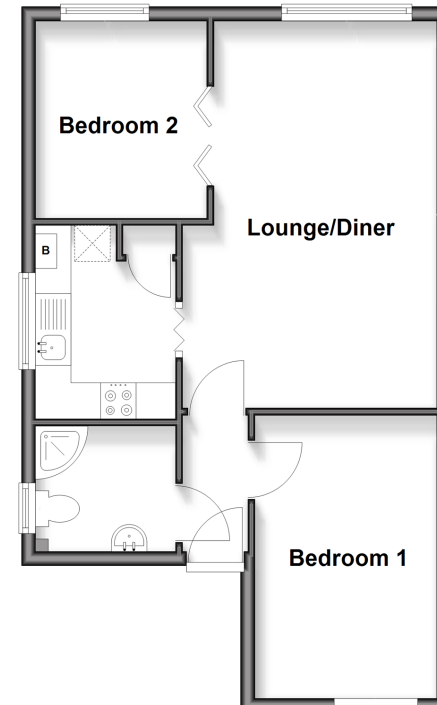
FIRST FLOOR

- Hallway
- Lounge/Diner: 17'6 x 11'8 (5.34m x 3.56m)
- Kitchen: 8'7 x 7'1 (2.62m x 2.16m)
- Bedroom 1: 13'0 x 8'5 (3.97m x 2.57m)
- Bedroom 2: 9'7 x 7'9 (2.92m x 2.36m)
- Shower Room

OUTSIDE

- Car Port
- Garden

First Floor
Approx. 46.8 sq. metres (504.3 sq. feet)



Call Maidstone - 01622 683737 ■ wardsofkent.co.uk

■ Legal advice should be taken to verify fixtures/fittings, planning, alterations and/or lease details
 ■ Through a Homewise Home For Life Plan people aged 60+ can secure this property for up to 59% less, by purchasing a Lifetime Lease

■ Appliances & services are untested, dimensions are approximate and floor plans are not to scale



13159045/20260114/CV/TB