



Guide Price
£425,000

Freehold

3x  1x  1x 

**Molescroft Way,
Tonbridge, Kent, TN9**

OVER 60?

Secure this property
for up to **59% less!**

Wards
Helping you move forwards



Main features

- Well presented family home close to sought after schools
- Large bright lounge and separate dining area
- Walking distance to the beautiful Haysden Country Park
- Good sized garden and garage en bloc
- Popular residential area

Accommodation

GROUND FLOOR

Hallway
 Lounge: 17'5 x 14'7 (5.31m x 4.45m)
 Dining Area: 9'9 x 7'9 (2.97m x 2.36m)
 Kitchen: 9'9 x 6'11 (2.97m x 2.11m)

FIRST FLOOR

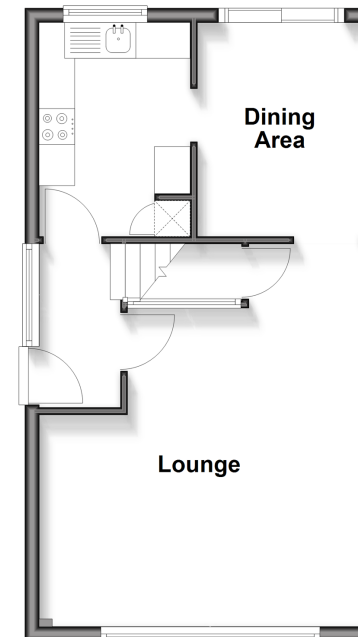
Landing
 Bedroom 1: 14'10 x 9'9 (4.52m x 2.97m)
 Bedroom 2: 11'5 x 8'2 (3.48m x 2.49m)
 Bedroom 3: 11'5 x 5'10 (3.48m x 1.78m)
 Bathroom

OUTSIDE

Front & Rear Gardens
 Garage en bloc

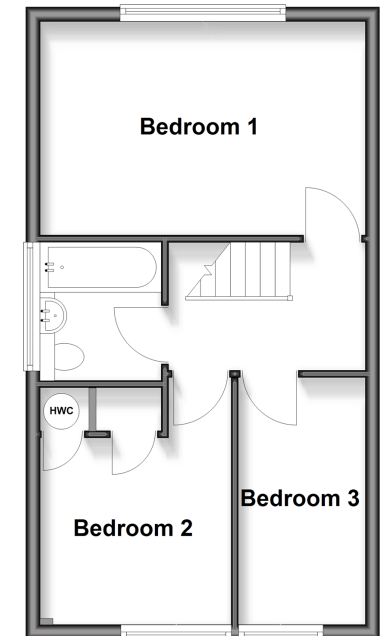
Ground Floor

Approx. 38.6 sq. metres (415.2 sq. feet)



First Floor

Approx. 38.6 sq. metres (415.2 sq. feet)



Call Tonbridge - 01732 770755 ■ wardsofkennt.co.uk

■ Legal advice should be taken to verify fixtures/fittings, planning, alterations and/or lease details
 ■ Through a Homewise Home For Life Plan people aged 60+ can secure this property for up to 50% less, by purchasing a Lifetime Lease

■ Appliances & services are untested, dimensions are approximate and floor plans are not to scale



14133709/20251023/NR/JW